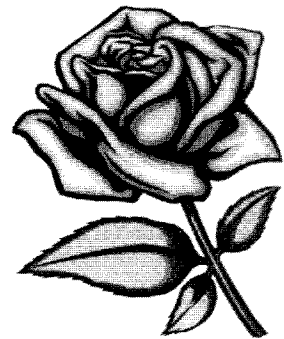


The Gold Rose

of Beta Sigma Psi National Lutheran Fraternity

Volume 46, Issue 3

Winter 2000



Then ...



In this Issue

75th Anniversary Report

Omega Chapter Chartered

Linemann Award Winners

National Basketball

Educational Foundation
Phone-a-thon Results

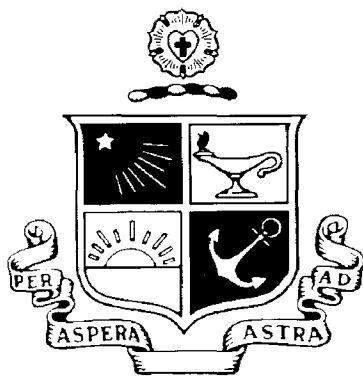
Zeta's Upcoming 50th

and now ...



In 1975 National Presidents gathered in St. Louis for the fraternity's 50th Anniversary Convention. From left to right: Herman "Red" Yost (A), John Hingst (B), William Welge (A), Norman Manke (B), Carl Sauer (B), Larry Edwards (Z), and Dennis Stelzer (A).

In 2000, National Presidents again gathered, this time in Chicago, for the fraternity's 75th Anniversary Convention. From left to right: (back) Bob Hillard (M); Ralph Folkerts (A), Larry Edwards (Z), Dennis Stelzer (A), John Hingst (B), (front) Del Karneier (A), Dave Jackson (Z), Kirk Meyer (A), Craig Varner (I).



The Gold Rose of Beta Sigma Psi

Volume 47, Issue 1

The Gold Rose is written and distributed by volunteers three times annually. If you would like to contribute articles, photographs, or advertisements, please contact the National Publications Editor.

National Publications Editor:

Matt Kreps

Contributing Writers:

Rod Thompson
Kirk Meyer
Tim Rassbach
Ralph Folkerts

Beta Sigma Psi Headquarters

c/o Southern Illinois District Office

2408 Lebanon Avenue

Belleville, IL 62221

Phone: (618) 235-0014

Fax: (618) 235-0051

E-mail: office@betasigmapi.org

Online: <http://www.betasigmapi.org>

Postmaster: Send form 3579 to Beta Sigma Psi Headquarters, c/o Southern Illinois District Office, 2408 Lebanon Avenue, Belleville, IL 62221.

Parents: Your son's, magazine is sent to his home address while he is in college. If he is no longer in college and not living at home, please send us his new permanent address.

National Board of Directors

National President

Kirk Meyer
3836 Tanbark Drive
Swansea, IL 62226
618/257-2474
president@betasigmapi.org

Treasurer

Del Karmeier
P. O. Box 481181
Kansas City, MO 64148
816/942-4666
delkarm@aol.com

Immediate Past President / Interim Expansion Director

Craig Varner
2143 Victory Garden Lane
Tallahassee, FL 32301
850/656-6695
past-president@betasigmapi.org

Recruitment Director

Jeremy Murrish
38 Meditation Way
Florissant, MO 63031
314/972-8987
recruitment@betasigmapi.org

Scholarship & Membership Education Director

Jon Riethmeier
983 Rue De La Banque, Apartment B
Creve Coeur, MO 63141
314/989-1417
education@betasigmapi.org
scholarship@betasigmapi.org

Senior Vice President

Steve Lapinski
444 North Front Street
Columbus, OH 43215
614/571-7050
srvp@betasigmapi.org

North-Central Regional Vice President (Epsilon, Zeta Delta Colony)

Tanner Ehmke
3202 Valleywood Drive
Manhattan, KS 66502
785/537-3147
ncrvp@betasigmapi.org

Interim Executive Director

Rod Thompson
753 Deer Creek Road
O'Fallon, IL 66269
618/628-8806
exec-dir@betasigmapi.org

Mid-Central

Regional Vice President (Alpha, Beta, Chi)

Carl Hasselbring
9832 Afton Place
St. Louis, MO 63123
314/353-4775
mcrvp@betasigmapi.org

Publications Editor

Matt Kreps
8334 Carter Street
Overland Park, KS 66212-4415
913/642-5397
publications@betasigmapi.org

South-Central

Regional Vice President (Zeta, Eta, Iota)

Chad Winterhof
223 Lynn Avenue
Ames, IA 50014
515/292-3600
scrvp@betasigmapi.org

Pastoral Advisor

Rev. Jeff Moore
Concordia Seminary - St. Louis
801 Demun Avenue
St. Louis, MO 63105
314/505-7224
pastoral-advisor@betasigmapi.org

Supplemental Foundations

Beta Sigma Psi Educational Foundation Chairman

Steve Panhorst
1220 East Silverwod Drive
Phoenix, AZ 85048
480/460-3424
steve@panhorst.net

Mid-Atlantic

Regional Vice President (Psi, Omega)

Matt Terry
1989 Iuka Avenue
Columbus, OH 43201
614/294-8956
marvp@betasigmapi.org

Alumni Affairs Vice President

James Schildmyer
12714 Cherokee Lane
Leawood, KS 66209
913/491-4593
alumnivp@betasigmapi.org

Beta Sigma Psi Foundation Chairman

John Hingst
1710 West Mulberry Street
Kokomo, IN 46901-4272
765/452-5351
jhingst@midambev.com

President's Corner

Kirk Meyer, 25th National President

Since being elected national president in August, I have been running through my head what to include in my first Gold Rose article, and how to start it. I finally decided that a brief introduction was in order since really the backgrounds/information on National officers are rarely known to others besides the rest of the officers or those they come in close contact with.

I was raised on a small farm near the town of Hoyleton, Illinois. I have a younger sister and a brother, who is currently a senior in Alpha Chapter. I started at the University of Illinois in the fall of 1990 and pledged and moved into Alpha Chapter at that time. I served as commissar, house manager, 2nd VP, and rush chairman, among other things while an undergraduate. After I graduated in 1994, I got a job in Chicago and became a director on the Alpha Alumni board. I changed jobs and moved to St. Louis in 1997, and was elected Alpha Alumni President. I was appointed National Recruitment Director in January 1997, and then appointed National Publications Editor in 1998. I was presented the Alumni Volunteer Service Award in 1997 for my involvement with Alpha Chapter, and planned the 1998 and 2000 National Conventions. I currently work for Woolpert LLP in Belleville, IL as a consulting electrical engineer.

I have five main goals/objectives for my term as national president (not necessarily in any order):

- increase our level of name recognition in the Lutheran community;
- continued expansion to new colleges and reactivation of currently closed chapters;
- increased involvement of actives and alumni at the National level and events;
- continued "cleaning up" of chapters;
- renewal of good traditions and replacement of ritual equipment.

Name Recognition

After having served as chapter rush chairman and also as national recruitment director, it is obvious that one of the biggest hurdles we face with recruitment is that the Lutheran community in general has no idea who we are or that we even exist, even after being around for 75 years. Call up a high school senior and introduce yourself as being from Beta Sigma Psi and they say

"Beta salsa pie? Who are you?"

Immediately we are something new, unproven, possibly not trustworthy, and everything said to them is taken with a grain of salt. When writing the National Recruitment Strategy, Todd Goebel included an interesting example of how an AAL agent made a cold sales call and was able to make a sale simply because his father had already heard of AAL and knew they were a good company. Imagine where we would be if with a reputation like AAL. People would be coming to us and beating on our door instead of vice versa.

Given our limited resources, I doubt we will ever have the name recognition of AAL or Lutheran Brotherhood, but we can certainly do much better than where we are right now. Therefore I plan on looking into placing paid advertisements and newsbits in various national and regional magazines and newsletters for youth, church leaders, and the general Lutheran community. We may even look into radio ads on stations which air The Lutheran Hour or similar programming. One resolution passed at the convention addressed the creation of a National scholarship. The wording was intentionally left open so a committee could come up with an effective plan after some thought and discussion. Depending upon how the committee decides to distribute the scholarship (only to existing chapter colleges or to any college?) and the amount of the scholarship, we may be able to generate a fair amount of free publicity by simply asking publications, churches, and Lutheran high schools to announce its availability. There are numerous other ideas which have been suggested by others. I ask that all active and alumni chapters and alumni individually begin to work at increasing our name recognition at the "local" level. If you need some ideas, feel free to contact any of the board members.

Expansion

During the last five years, we have experienced a rapid and welcome growth spurt, adding three new chapters in the last 18 months, with a fourth expected to charter this school year. I would like to see expansion to new colleges continue, as well as reactivate chapters at some colleges where the chapters have closed. Expansion helps

create excitement among all members with the idea that something new is happening. Plus, it helps all members rethink the workings and purposes of Beta Sigma Psi when teaching the new members. And of course the more members we have, the greater the brotherhood and the better the situation for continuing our existence.

Participation

While I haven't been to every National event since joining Beta Sig 10 years ago to see for myself, it seems to me that the level of involvement by both actives and alumni in National programming and operations as well as major events is not what it used to be and not where it should be. Alumni involvement at the chapter level is not where it could or should be either. The last several National conventions have each had 100 or fewer attendees total (including wives and children). I was told the 50th anniversary convention had well over 200 people at it, so I was initially expecting an even larger crowd for the 75th anniversary convention.

What is wrong or what is being done wrong that is preventing people from wanting to come to great events like these to renew old friendships, meet new people, and meet some of our most legendary alumni? I want to find the answer to that question and fix the problem so we have better involvement. Chapters with more alumni involvement are more successful in rush, house maintenance and improvement, and general chapter operations. I think the same is true at the National level. While we had a paid executive director, he was generally left to "do everything", and to some extent rightly so since that was his job. But in the last few years when we've been able to spread the workload out among numerous volunteers, we have been able to accomplish as much or more with more hands and minds to do things and multiple ideas and perspectives.

If we have better involvement, we could do even greater things – have conventions of 500 people, bring on five new or restarted chapters in three years, have name recognition from coast to coast, and have all our chapter houses in top physical condition and full to the rafters.

Continued Page 4

President's Corner Continued From Page 3

Risk Management

Fraternities as a whole have finally started to realize that they need to clean up their acts if they want to continue to survive. With today's high level of litigation, almost any incident of hazing, alcohol abuse, or accident which has a significant negative outcome can lead to the closing of a chapter, and in our case, probably the closing of the entire fraternity. Individual fraternities and councils at colleges have begun better education programs to reduce and avoid these risks. Some fraternities have passed mandatory dry chapter house policies, with many others strongly encouraging their chapters to go dry on their own. I believe that with the educational programming we have put forth in the last few years, we have been able to greatly reduce all forms of hazing in our chapters. I think the major items have been eliminated, but a few minor ones do still exist. We need to continue to educate our undergraduates and show them how any form or amount of hazing is destructive and intolerable. The alcohol reform

movement continues to move forward and gain momentum. Some of our chapters have found sororities are seriously following their nationals' "no alcohol involved interaction" policies and will no longer be able to have activities with them unless they change their own policies.

While having our chapter houses going dry may be a hard pill for some to swallow, an increasing number of colleges are making it a requirement. At some point it will be brought to our chapters from the outside. We need to be prepared for that time, and accept and embrace it, rather than try to fight it. Rejecting it will only make us look like we are a stereotypical fraternity as portrayed in the movies and on TV. We need to encourage our chapters to develop their own policies and better self-regulation.

Traditions

A lot of good traditions have been lost over the years, and bad ones have crept in. I am personally embarrassed that I know almost none of the various brotherhood songs which used to be sung by chapters on a regular basis. Singing of the sweet-heart songs and presenting a rose at weddings is another big one. I'm sure there are

others out there, but I am a victim as well of them having been lost and not passed to me. We need to work at bringing them back to strengthen the brotherhood.

We also now have three new chapters without ritual equipment, soon to be four. I know some of our older chapters have things missing or old equipment. We need to get a group of woodworking alumni and actives and sewing wives and mothers who can make more of these vitally important items to be able to properly perform the ritual.

As always, I am certainly open to ideas and suggestions on these and other topics. Volunteers or suggestions of volunteers are also always welcome. I hope we can continue to improve and rebuild Beta Sigma Psi back to where it has been in the past, and we need everyone to chip in and to their part.

per Aspera ad Astra,

Kirk Meyer, A-663
25th National President

Editor's Corner

This edition of the Gold Rose appears later in the year than normal due to the transition to the new Board of Directors. Over the next several issues, The Gold Rose will undergo a few changes to accommodate more content and a fresher look, but the overall appearance will continue to be much the same.

The next issue of Gold Rose will be published in late March of 2001 reporting on the results of the National Basketball Tournament, news from chapters and updates from the National Board.

If you are interested in submitting articles or information to Gold Rose, please contact Publications Editor Matt Kreps at (913) 642-5397 or by e-mail at publications@betasigmepsi.org. Gold Rose thrives on your submissions.

The submissions deadline for the March issue is February 28, 2001. Please contact the publications editor in advance if you have material that will arrive near that date so we can save space for your article.

Many thanks to members who contributed to this edition.

National Constitution Amended

A constitutional amendment was accepted at the 75th Anniversary Convention allowing the National Council to designate the number of Vice Presidents serving the National Fraternity. The Council also designates the scope of their duties.

The amendment was proposed by then-Vice President Matt Kreps to accommodate the need for an officer to serve alumni interests and the need for additional officers to serve duties traditionally fulfilled by a paid executive director.

The National Council of Beta Sigma Psi unanimously approved the amendment by voice vote on April 25, 2000. Chapter ratifications followed over the summer. The amendment changed the Constitution to read as follows:

Article III Section 4

"The general government of all chapters shall be vested in the National Board of Directors when the National Council is not in session. The Board of Directors consists of the elected and appointed National Officers to include: National President, Senior Vice President, Vice Presidents, Treasurer, Executive Director,

Publications Editor, Recruitment Advisor, Scholarship Advisor, Pastoral Advisor and the Immediate Past President."

Article I Section 3 of the By-Laws

"The National Vice Presidents will be designated in number and responsibility by a vote of the National Council and preside as chairmen of committees as designated by the National President and assist in the implementation and/or compliance with decisions enacted by the National Council or the Board of Directors."

Effects Visible

The amendment allowed for the creation of a fourth Vice President to serve our growing chapter base and a fifth Vice President to serve alumni chapters.

These volunteers are already making their mark on the fraternity through increased activity at the national level. As Beta Sigma Psi continues to grow, the National Board hopes to move back to a paid executive officer. Until that time, volunteer officers and alumni are effectively managing the business of the National Fraternity under the direction of the National Council.

National Office Moves, Assistant Hired

The National Office has once again been relocated. The situation in Columbia was no longer working, and so a new location has been found. Effective October 1, the National Office information is:

**Beta Sigma Psi National Headquarters
c/o LCMS Southern IL District Office
2408 Lebanon Avenue
Belleville, IL 62221
618-235-0014 voice
618-235-0051 fax**

Send all forms and correspondence to this address from now on. Items sent recently to Columbia should get forwarded by the post office or by the church, but you might ask if a couple weeks have gone by and you haven't heard that something was received.

In making this transition and retrieving the files and equipment from Columbia, there have been some lapses in processing

fraternity business. President Kirk Meyer and Interim Executive Director Rod Thompson have been working diligently as volunteers to correct this situation.

If chapters know of something which was sent in or requested and has not yet been processed, please inquire about the status of your materials.

The fraternity has also hired a new office assistant to fill the vacancy created by the departure of our Columbia staff.

Tammy Mayo will be working part time for the fraternity. She is employed part time at the Southern District Office and will contract with the fraternity to assist in processing the necessary forms and materials in running Beta Sigma Psi.



The new National Office in Belleville, IL.

Thanks to Alpha alumnus Merle Aukamp who found this great situation at the SID office for us! And also to Epsilon alumnus Rod Thompson for volunteering his time and van to make 2 trips to Columbia to retrieve all of our files and equipment.

National Directory Coming Soon

The National Directory will be available around the end of the year. The National Fraternity encountered unexpected delays in the publishing process. The new directory will contain listings for all known alumni.

The fraternity is actively searching for lost members. Our alumni tracking is one of the best in the National Interfraternity Conference, largely due to considerable effort in maintaining our database, including a list of lost alumni. The list can be viewed online at www.betasigmapsi.org/lost.html. All alumni are encouraged to take a few moments to check the list. If you know the location of any brothers who have fallen off of our list, please contact the national office.

New Board Has First In-Person Meeting at Office

The National Board of Directors met face-to-face November 4 for the first time since the August Convention. Meeting at the new national office location, Board members had the opportunity to check out the new office in person.

The Board used the opportunity to catch up on the status of various projects in progress, receive updates on the condition of active and alumni chapters and begin planning for the August 2001 Leadership Academy and August 2002 National Convention.

Initiatives underway include looking for suppliers for fraternity items such as flags, developing chapter programming promoting alumni involvement and regional alumni programming.

The Board also discussed several expansion opportunities including the need to revitalize closed chapters.

Board members are actively visiting chapters and looking for ways to support chapter-level needs. If you have a specific question or concern, please contact a Board member.

National Updates Online

Actives and alumni interested in receiving information year-round can sign up to participate in the national e-mail list. Participating members can receive information in a variety of means.

Members can choose to receive each message in their inbox, receive a digest of message subjects on a periodic basis or log in to a web page to view messages posted.

The e-mail list is provided through the National Fraternity by eGroups.com. To sign up for the service, visit the National Fraternity's Web site online at www.betasigmapsi.org/discussion.htm.

Iota Chapter and Columbia Alumni Chapter have their own discussion list for information specific to Beta Sigma Psi at

the University of Missouri-Columbia. The Kansas City area Alumni Chapter also has its own discussion list for members of Beta Sigma Psi, regardless of chapter affiliation. Active and alumni members can join both of these lists from the same location at the web site.

The National Fraternity strongly encourages all members to join these lists to keep up to date on National and chapter events, important announcements and discussions of National policy.

Also, chapters not using their own lists are encouraged to start a group through eGroups. For additional information, contact Publications Editor Matt Kreps at publications@betasigmapsi.org.

75th Anniversary Story

by Rod Thompson, Interim Executive Director

There was an excitement in the air all weekend for the 75th anniversary celebration. A blend of past, present and future as the rich traditions of the fraternity were unveiled and shared for the attendees and their families. Kirk Meyer (Alpha) did the lion's share of the organization and coordination. Meyer found something for everyone to enjoy during the weekend – my son Tommy liked the evening with the dinner show and the jousting, Doc Kaiser said he really enjoyed the baseball game. Everyone enjoyed the awards banquet.

For those of you who haven't met Del Lienemann, Sr. (Delta), you truly missed a wonderful weekend. Del appears more 60-ish than his true age, and perhaps this reflects his enthusiasm towards the fraternity and life. Del shared his stories with all of us, from the hotel lobby to the bus trips to the events and finally as he shared an inspirational keynote address. To meet the man for whom the fraternity's highest honor is named was beyond words for me. Thank-you Del, for risking fame and fortune to allow our fraternity to survive the war years.

I hadn't met Larry Edwards (Zeta) prior to the convention, and guess who sat next to me at the dinner. Other notable Beta Sigs at my table included John Hingst (Beta) and Doc Kaiser (Beta). Rev. Dr. Rudy Rehmer (Beta Honorary) assisted in opening the awards banquet with a prayer, much like he had done for our 50th anniversary celebration. Around the room were other recognizable Beta Sigs like Del



A fun memento from Wrigley Field

Karmeier (Alpha), Larry Erickson (Zeta), Dennis Stelzer (Delta), Bill Bunte (Alpha), Bob Hillard (Mu), Ralph Folkerts (Alpha), Governor Norbert Tiemann (Delta), Dave Jackson (Zeta) (Dave won his Kansas State Senate seat during this past election), Norm Wilms (Zeta), Andy Ortstadt (Beta), Steve Panhorst (Eta), Lee Anderbery (Delta), Greg Gesell (Delta) and John Schweizer (Alpha). In the crowd for the event were many of the past and present National officers including Craig Varner (Iota), Stevin Dahl (Epsilon), Jon Reithmeier (Iota), Jim Shildmeyer (Eta),

Matt Schaefer (Eta), Chad Winterhoff (Epsilon), Matt Terry (Chi), and Steve Lapinski (Chi).

Everyone who attended will have their favorite speech. Del Lienemann's keynote address was superb. I also enjoyed acceptance speeches from our Lienemann award winners Bill Bunte, Dennis Stelzer and Bob Hillard. If we

could get the sound bite from John Schweizer's acceptance speech about his moment of joy when his son, Alan (one of this year's Erck Award winners), decided to become a Beta Sig, we would have every Lutheran parent in the country trying to get their sons involved with Beta Sigma Psi.

I know there are notable names not listed in this article and I sincerely apologize. I was fortunate to attend the 50th Anniversary celebration in St. Louis as an undergraduate, and actually met Bill Welge. Bill spent about five minutes with me talking about his involvement with the fraternity – I thought he was very generous with his time because Bill was the keynote speaker. I hope that our undergraduates will have similar stories to share with our future undergraduates based on their experiences at the 75th anniversary. I did the math the other day ... and hope to be around for the fraternity's centennial event and look forward to seeing all of you there.

I wanted to share with all of our alumni that the contributions of our volunteers are greatly appreciated. Without their willingness to invest time, energy and money in our fraternity we would be without the rich heritage of the past 75 years. Our alumni are extremely generous as I was reminded again during the annual Educational



Iota Chapter members show off the several awards they took home. For the complete awards story, see page 8.

Foundation fund drive. Calling our alumni around the country was a great pleasure. I enjoyed the conversations and the support you all provide. Last year we raised over \$55,000 and this year's total may come close or surpass that amount. Thank you to all who supported the telethon this year to include undergraduates from Alpha, Iota and Eta chapters, parents club from Eta, several alumni from the greater St. Louis area and also to Steve Panhorst (Eta). There are many opportunities to

volunteer to serve our fraternity and get involved, regardless of where you live. Please contact the National Office and we will connect you with someone who needs your assistance.

Thanks to all who helped organize and support the 75th Diamond Anniversary celebration, especially to Kirk Meyer. I hope everyone makes plans to attend our biannual conventions. The next one will be in Kansas City in 2002. These events are important to our fraternity and to you; the

fraternity needs your active involvement and participation to grow and thrive. Other notable events to plan on attending include the 50th Anniversary celebration for Zeta Chapter the weekend of March 10, 2001 and the 50th Anniversary celebration for Eta Chapter in 2002. We would also like to see you attend next year's awards banquet at the Leadership Academy in 2001 most likely in St. Louis. Stay tuned for the announcements for these events and others!



Outgoing National President Craig R. Varner congratulates Kirk Meyer of Alpha Chapter, the fraternity's 25th National President.



Linemann Winners pause for a rare group photograph to commemorate the 75th Anniversary gathering. Pictured from left to right (back) John Hingst (Zeta), Dennis Stelzer (Delta), Bill Bunte (Alpha), Ralph Folkerts (Alpha), Larry Erickson, Larry Edwards (Zeta). Front row: Del Karmeier (Alpha), Rev. Rudy Rehme (Beta Honorary), Del Linemann (Delta), Norm Wilms (Zeta), Bob Hillard (Mu).



The 75th Anniversary Convention in Chicago brought together more than 100 alumni and friends to celebrate Beta Sigma Psi's heritage, and plan for its future.

3 Linemann, 2 Erck Winners at 75th Awards

by Rod Thompson, Interim Executive Director

The Awards Committee is chaired by George Kiser, alumnus from Iota Chapter and assisted by Rod Thompson, alumnus from Epsilon. Alumni serving on this year's awards committee for the National Convention included Steve Hollrah from Pi, Warren Pflantz from Iota, Mike Roth from Eta, Brent Seifert from Beta, Steve Lapinski from Chi, Cliff Ascher from Zeta, Greg Gesell from Delta and Bill Bunte from Alpha.

The 75th Anniversary Convention saw three Linemann Awards given to deserving alumni. Dennis Stelzer of Delta chapter, Bob Hillard of Mu Chapter and Bill Bunte of Alpha Chapter received the fraternity's highest honor. The complete story is on page 10.

Award descriptions and chapter winners are listed below.

The **Hingst Award** is presented annually to the active chapter or colony that exhibits the top scholastic achievement in the National Fraternity. The award is named for W. John Hingst, an alumnus from Beta Chapter, who served as the National President from 1952 to 1967. The 2000 Hingst Award nomination was received from and awarded to **Epsilon Chapter**.

The **Edwards Award** is given annually to the active chapter or colony exhibiting the best overall management. The award is named for Larry Edwards, an alumnus of Zeta Chapter, who served as National President from 1967 to 1972. There were no nominations received for the 2000 Edwards Award.

The **Welge Award** is presented annually to the active chapter or colony deemed to have the best recruitment program. The award is named for William H. Welge. An alumnus of Alpha Chapter, Brother Welge was one of the Founding Fathers of Beta Sigma Psi and served as National President from 1936 to 1938. The 2000 Welge Award nomination was received from and awarded to **Iota Chapter**.

The **Baehr Award** is given annually to the active chapter producing and displaying the best chapter or colony scrapbook. The award is named for William Baehr, a former Kansas State University Professor of Library Sciences and National Historian, who realized the importance of preserving chapter histories. The scrapbook is useful for a rush tool. There were no nominations received for the 2000 Baehr Award.

The **Founder's Cup** is presented annu-

ally to the active chapter or colony deemed to have the best membership education program. The traveling trophy is over 30 inches in height, and is awarded to the active chapter or colony that provides scholarship, religious, leadership, personal and social skill development programs and activities for active and associate members alike which add to the educational value of chapter life. The 2000 Founder's Cup nominations included Epsilon and Iota Chapters. The 2000 Founder's Cup was presented to **Iota Chapter**.

The **Erck Award** is presented each year to the outstanding active member of Beta Sigma Psi. The award is named for the late Reverend Erck, longtime Pastoral Advisor to Delta Chapter. The award includes the following wording "A distinguished leader in church, fraternity, campus and community affairs, demonstrated in assuming leadership, sharing responsibilities, teaching, supporting, caring, and giving of himself while achieving academic excellence." The nominees for the 2000 Erck Award included **Alan W. Schweizer** of Alpha Chapter and **Kyle Clower** from Iota Chapter. The committee could not decide between these two accomplished active members of the fraternity, and decided to award both deserving individuals with the 2000 Erck Award. The committee members could not recall when the Erck Award had been awarded to two individuals in the same year and in following years the Erck Award would remain with one active member chosen for this honor.

The **Luther Award** is presented each year to a person devoting service to the Lutheran Church. This prestigious award is presented to any pastor, church official, or other distinguished member of the Lutheran community for devoted service to the Lutheran Church and spiritual leadership provided to Beta Sigma Psi. The 2000 Luther Award was presented to **Pastor Richard Osslund**, an honorary member from Epsilon. Pastor Osslund has been the pastoral advisor for Epsilon Chapter for the past 14 years, and is the pastor at Memorial Lutheran Church, Ames, IA.

The **Junker Georg Award** is named for Martin Luther who hid and wrote under



Linemann Award winners present at the 75th Anniversary Convention from left to right: (back) John Hingst (Zeta), Dennis Stelzer (Delta), Bill Bunte (Alpha), Ralph Folkerts (Alpha), Larry Erickson, Larry Edwards (Zeta). Front row: Del Karmeier (Alpha), Rev. Rudy Rehme (Beta Honorary), Del Linemann (Delta), Norm Wilms (Zeta), Bob Hillard (Mu).



At left, outgoing Senior Vice President Stevin Dahl accepts an Alumni Volunteer Service Award. Alan Schweizer of Alpha Chapter and Kyle Clower of Iota Chapter both received Erck Award honors in a rare decision from the Awards Committee.

that name during the warrant for his arrest from the Vatican (he signed his writings Knight George, or in German, Junker Georg). This award is presented to the Beta Sigma Psi brother (either active or alumnus) most responsible for starting a new colony of Beta Sigma Psi. The award is presented as part of the colony's chartering ceremony. Nominations for the Junker Georg included **R. Brent Seifert** (Beta Alumnus) for assisting with the colonization effort at Beta Omega Colony, and **Greg Gesell** (Delta Alumnus) for assisting with the colonization effort at Zeta Delta Colony.

The Board of Directors of Beta Sigma Psi presented **Certificates of Recognition** to the following during the National Leadership Academy:

- Brother **Matthew J. Schaefer** (Eta Chapter) for service to the National Fraternity as a Member of the National Board of Directors from January 1999 through August 2000
- Brother **David S. Payne** for service to the National Fraternity as a Member of the National Board of Directors from December 1999 through August 2000
- **Reverend James Barton** for service to the National Fraternity as a Member of the National Board of Directors from August 1999 through August 2000
- Brother **Chad Pfister** (Iota Chapter) for Outstanding Speaker for the 75th Anniversary National Council Meeting

The **Alumni Volunteer Service Award**

is designed to recognize those alumni that contribute substantially to our fraternity. The award is presented to alumni who significantly impact a collegiate chapter or colony, alumni chapter, national committee, or national board. The contribution must be significant in nature and produce tangible results; reflect favorably on the alumnus' chapter and Beta Sigma Psi; and be of sustained and direct nature. The 2000 Alumni Volunteer Service Awards (with the citations included) were awarded to:

Jonathan G. Riethmeier from Iota Chapter. Jon has concluded serving a term as the Central Region Vice President with responsibilities for Iota, Eta and Alpha Chapters. He worked diligently in updating the membership manuals, a task that had not been accomplished for over ten years. Jon contributed greatly to the colonization of Iota Psi Colony in Bronxville, NY. Jon traveled to the campus in August 1998 and was the first national officer to lead an information session on the campus and continued to stay in contact with the colony leaders during the early stages of participation that eventually resulted in the chartering of Psi Chapter.

Stevin G. Dahl from Epsilon Chapter. Stevin served as the fraternity's National Scholarship Director from 1992-1994, Regional Vice President from 1994-1996, and Senior Vice President from 1996-2000. Stevin represented the fraternity at the 1996 National Interfraternity Council

Annual meeting. Stevin led the effort in 1998 to change the National Constitution to empower the Senior Vice President to be the chief disciplinarian of the fraternity and initiated many discussions on the risk management issues facing our fraternity. At the end of Stevin's term as Senior Vice President, none of our chapters were cited for major rules violations by any of our host institutions.

Matthew N. Kreps from Zeta Chapter. Matt was an undergraduate when elected to serve as the Western Region National Vice President, and visited our chapters at Concordia College, Ohio State, Illinois, Purdue, Iowa State, Midland Lutheran and Kansas State to foster better relations between the chapters and the National Board. Matt organized the 1999 Membership Education Forum hosted by Zeta Chapter and also organized the 2000 Central Region MEF. Matt contributed to the formation of Zeta Delta Colony at Midland Lutheran College, driving the eight hour trip many times to maintain contact with our membership and the advisors. Matt also chaired many of the National committees formed to discuss the challenges facing the fraternity.

Paul Mellring from Zeta Chapter. Paul volunteered to serve as the treasurer of the Beta Sigma Psi Educational Foundation for twelve years. Despite a growing family and a demanding professional career, he

Continued Page 13

3 New Linemann Winners at 75th Celebration

by Rod Thompson, Interim Executive Director

The Lienemann Award is the Fraternity's highest honor. Appropriately, it was first given to Del Lienemann, an alumnus of Delta Chapter, who served as the National Secretary-Treasurer from 1942-1964. The Secretary-Treasurer's position was comparable to today's Executive Director, but was a volunteer position during Del's tenure. The award is given for "outstanding service to the Fraternity, university, government, or mankind in general." The application process includes submission of a nomination package at least three months prior to the annual National Council meeting, the nomination package is reviewed and approved by the National Executive Board, and then forwarded to the current Lienemann Award honorees for their review. The Lienemann Award is not presented every year. Past recipients of the Lienemann Award include: Del Lienemann, Sr. (Delta), Paul Munger (Eta Honorary), John Hingst (Beta), Larry Edwards (Zeta), Norm Wilms (Zeta), Ralph Folkerts (Alpha), Rev. Dr. Wilbert J. Fields (Epsilon Honorary), William J. "Jim" Jorns (Zeta), Al Panhorst (Eta), Larry Erickson (Zeta), Del Karmerier (Alpha), Rev. Dr. Rudy Rehmer (Beta Honorary), and Darryl Jahn (Epsilon).

The Lienemann Award was presented to Dennis Stelzer (Delta), Bill Bunte (Alpha) and Bob Hillard (Mu) at the 75th Anniversary Awards banquet. The nominations for these recipients are provided for our alumni who weren't present at the banquet to witness the presentations. We congratulate all of our Lienemann Awardees for their accomplishments and contributions to the fraternity, church and community.

William (Bill) F. Bunte Alpha Alumnus

Bill Bunte began his involvement with Beta Sigma Psi in an unusual way. He was active with a group of about 20 to 25 Lutheran men at the University of Illinois who had a housing unit which was referred to as a "Lutheran Independent House", or amongst their membership, the "Kumonami House". In the fall of 1954 the group was contacted by John Hingst in an effort to reactivate Alpha Chapter, if this group was interested in affiliating with

Beta Sigma Psi. Bill was the President of the group in late 1954 and early 1955, and Bill recognized that the group had a better chance for a long term existence if they did affiliate with Beta Sigma Psi. His influence with the membership swayed the vote, and they decided by a majority vote to affiliate with Beta Sigma Psi in the Spring of 1955. Bill served as the first President of the reactivated Alpha Chapter for about a year.

Bill was instrumental in the formulation of the Alpha Chapter Alumni in the late 1950's, and served as the first President for about 3 years. In 1969 his family moved to the St. Louis area and he was asked by Larry Edwards to serve on the Erck Foundation, the forerunner of the Educational Foundation. Bill's major contribution among many initiatives was working with an attorney to achieve certification as a not-for-profit organization with all of the benefits of charitable tax contributions for donors. He served with the Erck Foundation until the mid-1970's. In 1975, Bill served on the 50th Anniversary Central Committee. He has assisted with telethons for many years. In the early 1990's he served as a National Vice President for two terms from 1990 to 1994. He has assisted as a member of Alpha Chapter Alumni's recent fund raising committee. Bill has served on the National Awards Committee since 1997 and continues to serve on this committee. Bill has attended every University of Illinois homecoming since 1953 and continues to meet and greet Beta Sig alumni from several generations. In 1967 he was honored with Alpha Chapter's Distinguished Alumni Award.

Brian Bunte, graduating in 1983 from the University of Illinois and a member of Alpha Chapter, is serving the fraternity and continues the tradition established by his father. Bill Bunte has served Beta Sigma Psi for Alpha Chapter and at the National level in many capacities. His 40 plus years of volunteer service to Beta Sigma Psi are founded in his belief in the principles and high ideals of the fraternity. Bill Bunte has been



William F. Bunte, Alpha, receives the Linemann Award from Linemann winner Del Karmerier

a contributing leader for Beta Sigma Psi, both on a Chapter and National basis, and he is highly deserving of the tangible recognition associated with Lienemann Award.

Dennis Stelzer Delta Alumnus

This nomination is submitted on behalf of Lee Anderberry, current President of the Lincoln Alumni, Tom Schlange, former National Executive Director and a Delta Alumnus, and all Delta Alumni, past and present, whose Beta Sigma Psi involvement have been enhanced due to Dennis Stelzer's contributions to Beta Sigma Psi.

While an undergraduate, Dennis served Delta Chapter as pledge class treasurer, Treasurer, House Manager, Steward, and Rush Chairman. He also served on campus as the Junior Interfraternity Council Treasurer. He was active in the Lutheran Chapel at the University of Nebraska - Lincoln and sang in their choir for all four years of his college experience. While an alumnus, Dennis served Delta Chapter as the Treasurer of the Alumni Chapter and as financial advisor to Delta Chapter for 25 years. Dennis served the National Fraternity as Treasurer and President. He has also served on the Housing Corporation at the National level.

He served two years in the United States Marine Corps and was honorably discharged in 1970 with the rank of Sergeant. Career volunteer service includes Chairman of the Junior Achievement of Lincoln, President of the Cornhusker Council of the Boy Scouts, and President

of the Lincoln Management Society. In all of these organizations, Dennis contributed as a volunteer and served on their boards for a significant number of years. Church involvement has included membership of the Southwood Lutheran Church in Lincoln. He has served on the church council and as the President of the Congregation. While he was President of the Congregation, the church underwent a successful capital fund drive to improve the facilities of the church. He continues to sing in the choir and men's chorus.

His career accomplishments include working in the banking industry for 20 years and serving as President and CEO for 9 years of a computer subsidiary of the National Bank of Commerce in Lincoln. Dennis is presently working for a Lutheran Social Ministry organization and is the Human Resources Director for Martin Luther Home Society, Incorporated and related corporations which is a family of not for profit corporations serving people with developmental disabilities. The Martin Luther Home Society is affiliated with the Evangelical Church in America and a recognized organization of the Lutheran Church Missouri Synod. Dennis has worked in this area for nearly 6 years.

Dennis was the fraternity's President when we celebrated our 50th anniversary celebration. He is admired and respected by the Delta Alumni and his name is mentioned frequently in conversations about fraternity business on a National basis.



Dennis Stelzer, Delta, gives his acceptance speech after receiving the Linemann Award

Dennis has devoted a great number of years in significant volunteer work with Beta Sigma Psi. His personal and professional resume supports the "outstanding service to the Fraternity, university, government, or mankind in general" expectations for award of Beta Sigma Psi's highest honor for lifetime service which is the Lienemann Award.

**Robert E. Hillard
Mu Alumnus**

Bob entered Eastern Illinois University in the fall of 1963. He became involved in Gamma Delta, the Lutheran college youth group. Soon after, he was elected treasurer. A year later Bob was elected President of Gamma Delta. In the fall of 1965 he organized a meeting to explore the opportunity of starting a Beta Sigma Psi chapter on the campus of Eastern Illinois University. Bob was elected the first President of the colony which was activated in April of 1966. His pin number is M-1 and is one of his most treasured awards. April 16, 1966 was an important day for Bob. Not only was it the date that Mu Chapter was chartered at Eastern Illinois University, it was also the day he became engaged to Betty A. Freeberg. They were married on August 28, 1966.

Bob graduated with a B.S. in business with accounting and management degrees in May 1967 and moved to St. Louis. He spent five years working for a large public accounting firm and became a Certified Public Accountant. Then Bob worked for a candy manufacturer, a savings and loan, and a shoe manufacturer in financial management positions. Bob earned an M.B.A. degree from the University of Missouri - St. Louis in 1977 and became a Certified Management Accountant in 1975. In 1981 Bob became a financial advisor. In December 1982 Bob formed his own stock brokerage company, which he still operates today with about 30 sales representatives. In the spring of 1968 Bob joined the Army Reserves and served for six years.

In the spring of 1968 Bob and Betty joined Beautiful Savior Lutheran Church in Bridgeton, MO, which they still attend today. Bob has served as Director of Stewardship, Treasurer and Vice President. Bob served on the Board of Directors for the Council of Lutheran Churches for six



Bob Hillard, Mu, accepts the Linemann Award for years of dedicated service.

years holding the office of Treasurer for 3 years and President for 3 years. During that time he organized Lutheran Octoberfest as a social gathering for St. Louis area Lutherans. More than 5,000 people attended during the two years he was in charge of Octoberfest. Bob is currently serving on a committee for Lutheran Children and Family Services. Bob organized an Ash Wednesday prayer breakfast for St. Louis area alumni and has encouraged national to help organize annual prayer breakfasts in other cities.

During the year Mu chapter was a colony, Bob led the effort to overcome protests that Beta Sigma Psi should not become a recognized fraternity because of the restrictions that members be Lutheran. After graduation Bob served as Regional Vice President, National Treasurer, and National President. For most of the years since he was activated as a member of Mu Chapter, Bob has been involved at the local or national level and currently serves on the Board of Directors for the Housing Foundation.

**Zeta's Dave Jackson Nominated
for Linemann**

Dave Jackson of Zeta Chapter has been nominated and approved by the National Board of Directors for the Linemann Award. The application is now with the Linemann Committee.

For additional information, see the story on Zeta's 50th Anniversary celebration on page 19.

Omega Chapter Chartered in August

by Rod Thompson, Interim Executive Director

August 26, 2000 will be a special day for the Founding Members of Omega Chapter, all present and future brothers of Omega Chapter, their families and their friends. In the summer edition of the 1999 Gold Rose my remarks from the Chi Chapter Chartering are recorded, and in that speech my thoughts were focused on why a chapter succeeds or fails, and why our Lutheran faith and common background are important to Beta Sigma Psi. For the Omega Chapter Chartering my focus is on "what Beta Sigma Psi means to me" and to all of our alumni and collegiate members.

For the first reading to commemorate this event, I selected Ephesians chapter 2 verse 8: "For by grace you have been saved through faith; and this is not your own doing, it is the gift of God". We began as a faith based fraternity with our Lutheran heritage as a common bond. We "recognize that the life rooted with Christ in God is the only true goal of human existence." Our fraternity has struggled with this Lutheran identity, much like our own synods and congregations do. But we need the common thread of our Lutheran identity or else we will evolve into situations like the other Greek houses on campus. Our founding fathers had a vision that has lasted for over 75 years and we can continue only if we continue in their steps, similar to our government cherishing the vision of our country's founding fathers.

The next reading I have selected is from Matthew chapter 4 verses 18 through 20: "As he walked by the Sea of Galilee, he saw two brothers, Simon who is called Peter and Andrew his brother, casting a net into the sea; for they were fishermen. And he said to them, 'Follow me, and I will make you fishers of men.' Immediately they left their nets and followed him." Each of us has our own story of how we joined Beta Sigma Psi. In my case, Ron Norine, one of the summer rush chairmen from Epsilon that year, drove into my yard and introduced himself to my parents and myself. He invited me to stay at the house instead of paying for a dormitory room for the summer orientation at Iowa State. I would save about \$20 that way. I found my way to the house and one of the guys gave me a quick tour of the house from bottom to top. Bill Jentzen was there that summer for I can't remember what reason, except he was trying to remodel the basement bathroom.



Fifteen men and one advisor represented Omega Chapter at its chartering August 26, 2000.



Omega Chapter receives its charter from National President Kirk Meyer on August 26.

There were a couple of other guys that were in and out for various reasons. I can't recall anyone saying much to me during the next couple of days, and when I was ready to leave I asked Ron what it took to join the house. Ron gave me a bid card and I signed. I later figured that I had been their easiest member to pledge as I didn't ask any questions about what a fraternity was or what they were all about.

We are not a group of elite members when we join. Very few if any are the high school class "king" or the most popular kids in their class. We offer an open door where other fraternities may not think us worthy or popular enough as criteria for their membership. Each of us has at one time or another determined "what Beta Sigma Psi means to me." Whenever I listen to these testimonials, I am convinced that our Lutheran faith is important to our fraternity and that Beta Sigma Psi is part of the ministry to our youth on the college campuses. If any parents, pastors, alumni or others have any doubts about the impact of Beta Sigma Psi on our collegiate members, they would no longer have any hesitation about our fraternity if they could listen to what Beta Sigma Psi has meant to our members from the testimonials in their own words.

The next reading I selected is from Luke chapter 15 verses 31 and 32: "And he said to him, 'Son, you are always with me, and all that is mine is yours. It was fitting to make merry and be glad, for this your brother was dead, and is alive; he was lost, and is found.'" Beta Sigma Psi is a ministry to college students that keeps them close to the church and involved with their faith at this crucial step in their lives. With this church involvement during their college days they have a chance their faith will remain strong throughout their lives. There are times in my life when I didn't attend church regularly. One or two excuses result in one or two more weeks away from a Sunday service. The imprint of Beta Sigma Psi on your soul reminds us that we need to refresh our fellowship with friends at church. Beta Sigma Psi allows our mem-

Continued Next Page

**Omega Chartered
Continued From Previous Page**

bership to reflect on a whole lifetime of faith. In college the focus is on college and what is happening "right now." At the mid-life point you realize what the true meaning of life is, where to find happiness and enjoy success. As we become older, we come to terms with the terminal nature of our existence on earth. Friendships we have with our involvement in Beta Sigma Psi help us discover how to come to terms with the finality of this existence and the key to happiness is to live each day to its fullest in a faith in Christ.

The entire National Board of Directors of Beta Sigma Psi, and our collegiate and alumni members throughout the country, congratulates all the members of Omega Chapter on this memorable event. My hope is that each of you will find a way to enjoy the true fruits of your membership in Beta Sigma Psi – a lifetime of friendship and involvement. Thank you for supporting this unique ministry to our college students.

**Awards Report
Continued From Page 9**

worked side-by-side with the foundation chairman to manage the financial affairs of the Educational Foundation, including completing the budget, writing the checks for grants and scholarships, and processing the generous annual contributions made by our loyal alumni, which amount to over \$55,000 annually. Paul also participated in many of the annual Educational Foundation telephone fund drives held in St. Louis.

John Schweizer from Alpha Chapter. John has been quite active in the Alpha Chapter operations during the past few years. He spent the better part of 2-3 weeks during the summer of 1999 at the chapter house working on the ongoing chapter renovation project. His involvement was essential in having the chapter house ready for the school year, as the contractors performing some of the work were late in finishing their effort. John was able to step in and finish up quickly behind them. He brought various cleaning tools

from home and led the Alpha Chapter members in their annual house cleaning efforts, making the kitchen and some other areas cleaner than had been done in years. John also continued to work on the renovations in the summer of 2000. He also attends chapter meetings frequently. John was elected to the Alpha Alumni Board in 1997, and Alpha Alumni President in 1999. John was able to recruit his son, Alan, to be a Beta Sig in 1997 and Alan was honored as one of our Erck Award winners at the 2000 Convention. John's acceptance speech included his thought that one of the most memorable events in his life was when his son decided to become a Beta Sig!

Many awards were not applied for this year, or in years past. Active chapters are encouraged to begin planning now for awards submissions by appointing members to begin the process based on last year's requirements. Alumni chapters should follow up with their active chapter to ensure that these applications are completed and submitted on time.

National Budget Adopted

by Del Karmeier, National Treasurer

"The National Board of Directors adopted a budget for the 2000-2001 fiscal year during a conference call meeting on September 13. The budget estimates that revenues will exceed expenses by \$1,755, making it the fifth straight year of improvement in the National Fraternity's financial condition.

The adopted budget estimates that total revenues will be \$58,555. Of this amount \$34,005 would come from dues and fees paid by student members, active chapters and colonies. Alumni contributions (including grants from the Beta Sigma Psi Educational Foundation), and alumni chapter dues are estimated to provide \$16,400 during the 2000-2001 fiscal year. The remaining \$7,750 is expected to come from sales of badges and other merchandise and interest on invested cash reserves.

The adopted budget estimates that expenses during the year will be as follows:

Publications (including Gold Rose)	\$15,500
Student Educational/Spiritual Programs	7,400
Recruitment and Expansion	3,400
National Office and Consultants	15,200
National Board & National Council	7,700
Interest on Debt	2,800
Insurance, Awards, Memberships, etc.	4,800
TOTAL ESTIMATED EXPENSES	\$56,800

The Board approved a contract for active chapter/colony visitation services and authorized recruitment of a person to handle

membership records and other duties at the National Office. The cost of those two contracts is expected to be \$10,200 for the year and is included in the "National Office" expenses.

The improvement in the fraternity's financial condition during the past four years is the direct result of decisions made at the National Council meeting in Branson, Missouri in August, 1996. During that meeting, it was resolved that volunteer officers would handle many of the routine duties which had previously been done by employees of another fraternity through a management services agreement. In 1995-96, the last year of that agreement, the National Fraternity spent \$77,920. During the past four years, expenditures have averaged \$54,000/year.

During the past four years, the amount owed by the National Fraternity to the Beta Sigma Psi (Housing) Foundation has been reduced by over \$15,000. In October, a committee of three National Board Members approved the investment of \$18,000 of operating funds in a one-year certificate of deposit paying 6.78% and a money market account paying 5.75%. This will substantially increase income from investments

At the beginning of the 2000-2001 fiscal year, the national fraternity's balance sheet showed assets (including office equipment and merchandise inventory) of \$45,018. Total liabilities were \$47,641, nearly all of which is the debt incurred in years before July 1996. The net operating income estimated in the adopted 2000-2001 budget combined with principal payments to be made on debt could put the National Fraternity back into a situation where its assets exceed its liabilities by the summer of 2001."

Chapter Consultant Hired

by Scott Gillard, RISE Consulting

Beta Sigma Psi has again retained the services of Scott Gillard to visit all chapters as an outside advisor. Below are excerpts from a letter introducing his goals for the fraternity in 2000 and 2001.

As some of you may or may not know, I visited eight of the ten chapters and colonies of Beta Sigma Psi last year through my employment with the North-American Interfraternity Conference (NIC). This upcoming year, I will be continuing to work with the fraternity, visiting all the chapters and helping move the fraternity forward in any way that I can through my new company, RISE Consulting. These travels and experiences give me a unique perspective into looking at the undergraduate chapters, and the ability to identify themes throughout the fraternity. There are two areas that I want to talk about specifically, as I think they are the two most important parts of any undergraduate fraternity: recruitment and member education (especially new member education).

Let's look at recruitment first. As we can all recognize, the process of recruitment is the lifeblood of the fraternity. It is what keeps the fraternity fresh, new and able to look into, and be a part of, the future. Once I was able to learn about the recruitment process the fraternity encourages and supports the message I have tried to send is that Beta Sigma Psi has a great asset with this process. Finding new members is such a problem for fraternities currently that it is assumed that any campus, chapter or community that I am going to work with is going to want help in this area. One of the first things I tell anyone is that the focus needs to be not on rush, but on recruitment; going out and finding the people that are right for, and going to fit in, your organization. The process of seeking out young men that Beta Sigma Psi employs does exactly that, so you are already ahead of the game.

However, there is a process in place that has the potential to be successful, but it needs to be used, adapted and enhanced. As a fraternity, Beta Sig has wonderful things to offer to young men in college. As a Lutheran fraternity, it has something more unique and special to offer, so it needs to capitalize upon that. The chapters need to talk about what the fraternity, and their chapter specifically, is all about and what it has to offer. Then go find people that fit that mold.

The second major area is member education. This can be broken down into two areas: new member (pledge) education and education of current members. The education of current and future members is one of the integral parts of a fraternity. This needs to begin once the fraternity has extended a bid to an individual and never stop. There is an emphasis on the education at the beginning because these new members need to be prepared to become an active brother in the fraternity and there are things they need to know. That said, it is not necessary for them to be kept from becoming brothers for ten, fourteen or twenty weeks, as is the case in some of the chapters in the recent past. When the education period goes on that long, it usually suggests unnecessary activities are taking place. These new members need to be taught what they need to know and then brought into the brotherhood; things such as the foundation, values, history and meaning of fraternity and Beta Sigma Psi. This should not be treated as a trial period. That should take place in the recruitment process, and when someone is extended a bid, the chapter should be confident that they are a fit for the fraternity. Bids should not be extended and people weeded out, this takes away from the process for everyone. Potential members should be extended bids if deemed appropriate, taught what they need to know to become a brother, initiated and then, and this is important, continue to be educated. Ongoing member education is something that is sorely lacking in Greek organizations and could alleviate some of the problems within them. For example, could we hold off teaching some of the history, protocol, procedures and expectations until the semester after someone is initiated, or even until their second year? Furthermore, could we add education, such as how to be an active alumnus, how to write a resume, interview and networking skills? I think that education, how it happens and what role it plays in the fraternity, is an important issue to ponder and tackle.

If anyone has any questions or concerns, or simply wants to discuss, I can be reached at scott@rise.cc or 248.349.5274. If you want to learn more about RISE, you can check out www.rise.cc.

Colonization Leaders Needed; Many Opportunities

The National Fraternity has enjoyed tremendous success in its colonization efforts over the past two years. Much of that success is due to committed volunteers leading colonies to chartering.

Chi, Psi and Omega. Three new chapters adding to the strength of the National fraternity have been chartered in the, past two years, with Zeta Delta Colony already conditionally approved to become Alpha Alpha.

Much of this success comes from committed undergraduate members seeking to establish the values of Beta Sigma Psi on their campus. But behind every colony and new chapter are committed alumni volun-

teers who help undergraduate members attain their goals.

Many of these volunteers have no special training or role in the fraternity; they simply find a great opportunity to pass their fraternity experience to a new group of men.

The future stability and growth of the National Fraternity rests largely in successful colonization to expand our membership base and recruiting population. More than ever, colleges are seeking the particular values and ethics promoted by Beta Sigma Psi.

The National fraternity receives regular inquiries from groups interested in starting a new chapter. Often, the most difficult part is

finding alumni advisors.

The National Colonization Plan outlines the requirements for recognition as a Colony and charter as an Active Chapter, establishing a clear set of goals for new groups.

Alumni members living near colleges with sufficiently large student populations to support a chapter should consider inquiring about leading a colonization effort. Substantial resources and expertise are available to help in these efforts, including assistance in locating other alumni to share advisory roles. Interested members should contact Past President Craig Varner.

Iota Founder Pflantz Honored

Warren Pflantz, one of the 12 charter members of the Iota Chapter of Beta Sigma Psi, was honored by the Chapter's Alumni Association at this year's Homecoming with a new award for his 40-year commitment to both the National Fraternity and the Iota Chapter.

The new award, the Pflantz Paddle, is a physical embodiment of an honoree's service and dedication to our fraternity, demonstrated over time. Symbolizing the promises made during associate membership, a time when both a paddle and a commitment to the fraternity are made, the Pflantz Paddle is given to worthy alumni who have demonstrated loyalty and service to Iota Chapter and the National Fraternity through a lifetime of giving unselfishly of both time and resources.

The recipient is given a decorative paddle, reminiscent of their own paddle of years past. In addition, their name is placed on a larger, over-sized, perpetual award paddle that now hangs in the chapter dining room, commemorating all honorees.

Pflantz, who was one of the initial eight men at the first meeting of the Missouri Concordia Club in 1959, went on to play an active role in the chapter during his undergraduate years. Forty years later, he continues to return each fall, and remains a fixture at the Annual Alumni Meeting at Homecoming. Pflantz's consistent involvement in Iota over the years is what the Alumni Association wanted to highlight.

"I don't think Warren has missed an annual meeting at Homecoming as long as I've been a Beta Sig," said Alumni Board President Jim Gwinner. "It's an example we should all emulate."

Receiving the award in quiet fashion, Pflantz expressed both gratitude and humility. "I'm very honored," said Pflantz, "but there are many other alumni more deserving." He then named several alumni that have contributed to Iota's success over the years, saying, "Alumni involvement is very essential. If alumni aren't interested, the chapter and the organization will die." He added that alumni participation is the way we perpetuate the goals and ideals of Beta Sigma Psi.

Interviewed later, Pflantz, who was drawn to Beta Sig after not finding a home in other Greek organizations, discussed why he joined the fraternity when he did.

"I think it was the basic purpose, which is to improve a person spiritually, scholastically and socially — with an emphasis on the spiritual." He continued, stating that it is those purposes that keep him coming back year after year. "The goals of the fraternity enable students to grow," he said.

Pflantz then compared his involvement, and that of all alumni, to the role of a teacher, saying that his participation is aimed at

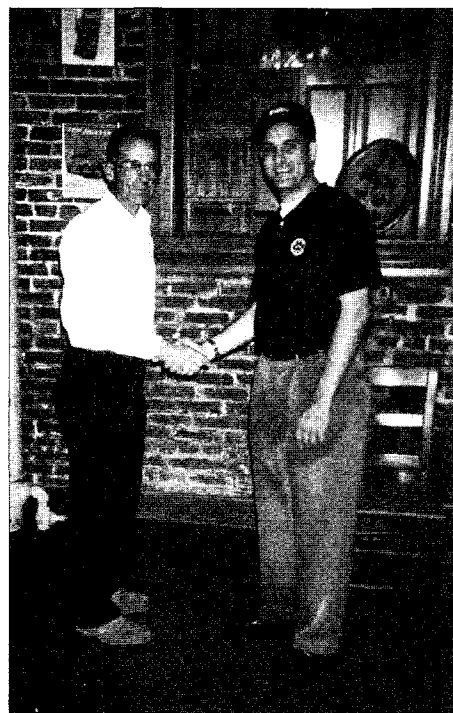
helping students grow, helping them to develop and reach the goals of Beta Sig. He said he tries "to be a leader to the next generation, showing them how to get to these high ideals."

Mentioning that he was "quite pleased with the ways things are going," Pflantz did express a concern that Beta Sig not lose its spiritual dimension.

"Being Lutheran is what keeps us unique," he said. "There's often a negative imagery when people say 'fraternity,'" he continued, "We need to project a more positive image. If we claim to be a Christian organization, we should take the lead and set an example."

Beyond that, he added that it was very important for alumni to keep in touch with the fraternity and support it. "Close communication with the chapter is important," he said. "We should not be afraid — not to tell them what to do — but to show them how things run. And we should support the members with scholarships."

Talking about the Beta Sig experience for undergraduates, Pflantz said, "It gets back to the purposes of the fraternity. It's designed to help a person grow spiritually through Christ, and of course through scholarship and socially." He encouraged the members to take advantage of opportunities to grow as individuals.



Iota Founder Warren Pflantz and Iota Alumni President Jim Gwinner.

Alumni Survey

The Iota Alumni Website www.betasigmapsi.org/columbia now has an Alumni Survey to help us serve our organization and chart our future. Please take a few moments to fill it out. If you don't have web access, contact Tim Rassbach by phone at 573-443-5962 for a copy by mail.

National Purchases Directors and Officers Policy

As part of an ongoing effort to protect the assets of the fraternity as well as the individuals who volunteer to hold office, the National Fraternity along with the Educational Foundation and Housing Foundation recently acquired a directors and officers insurance policy.

The policy provides coverage for National-level officers in the event of an

unforeseeable tragedy. National President Kirk Meyer requested information about the policy when setting up a renter's insurance policy for the new National Office.

"This is part of an ongoing effort to bring the fraternity up to date on insurance at all levels," said Meyer. "In today's society, this kind of policy is absolutely necessary. The National Fraternity is actively

encouraging all chapters to review their policies for both property and liability coverage to ensure that coverage is adequate to meet any risk exposure."

Alumni or active chapters with questions should contact Senior Vice President Steve Lapinski for additional information. Lapinski can be reached by e-mail at srvp@betasigmapsi.org.

Beta Sigma Psi Educational Foundation

The Beta Sigma Psi Educational Foundation would like to sincerely thank all of our donors. The following is a list of our donors during the Educational Foundation's 2000 Fiscal Year:

Your gifts enabled the sponsorship of numerous scholarships and other educational programs throughout the year.

Founders' Society		Concordia Club	
Beta Chapter	Zeta Chapter	Alpha Chapter	
John Hingst	Paul Mellring	Edward Bucnis	Keith Axtell
Paul Frosch		Jeff Berg	Darryl Jahm
Edwin Bescherer, Jr.	Eta Chapter		Zeta Chapter
Robert Hingst	Kenneth Voertman	Beta Chapter	Norman Wilms
John Judge	Steve Panhorst	Andrew Ortstadt	Kenneth Bender
		Dennis Peters	Larry Edwards
		Jeff Finke	
Delta Chapter	Iota Chapter	Raymond Baumruk	Iota Chapter
Scott Gesell	Craig Varner	Robert Andresen	Joseph Potts
John Johanson			
		Delta Chapter	Upsilon Chapter
Epsilon Chapter		Lee Anderbery	Brian Freese
Rodney Thompson		Epsilon Chapter	
Duane Grummer			

Warren Hecht
Alan Miller
Randolph Lange
William Keel
Donald Weeke
Stephen Kannaka
Walter Koepke

Donor

Timothy Frey
Brian Peterson
Leon Wendte
William
Brockschmidt
Donald Robins
Charles Kaub
Michael Rosborough
Rodney Gieseke
Robert Sudbrink
Dean Voelker
Chris Nack
Andrew Niermann
Jeffrey Sowers
Timothy Russo
John Meier
Stanley Kirchhofer
Steven Keel
Mark Dierking
Paul Pottker
Duane Kolbus

Stephen Eggerding
Douglas Kopplin
George Olsen
Paul Yellina
Aaron Johnson
Frederick Ackermann
Mark Rescino
Duane Cordes

Beta Chapter - \$13,235

Founders' Society
John Hingst
Paul Frosch
Edwin Bescherer Jr
Robert Hingst
John Judge

Concordia Club
Andrew Ortstadt
Dennis Peters
Jeff Finke
Raymond Baumruk
Robert Andresen

Wittenberg Club
George Beck
Raymond
Behrschmidt
Donald Meinheit
Brian Bosma
Paul Davis
Paul Wagner
Jake Allen
Robert Sauerman

James Winkelman
Mark Stavnes
Gregory Scheidt
Jeffrey Van Voorhis
John Farbak
Thomas Daseler
Brent Lahey
William Hingst
Jeffrey Schuetz
Arthur Kuntz
Timothy Bescherer
Thurman Kaiser
Garth Hawkins
Kenneth Luedtke
Alvin Wilken
Thomas Snyder
Richard Mendelman
Thomas Nelson
Dale Siefker
John Nichols
Jeffrey Decker
Richard Hercamp
Albert Haeger
Michael Garwood
Eric Schaaf
Steven Witte
Garnet Buhner
Douglas Bovee

Patron

Greg Perko
James Shortle
John Reininga
R. Brent Seifert
Mark Seever
James Drexler
William Bussing
Roger Pollert
Michael Shaffer
John Janson
Jon Whisler
Thomas Way
Gerald Holzhauser
Norman Mankey
Roger Schepman
Dale Kline

Member

Col. Ronald Bischoff
Steven Ehrman
David Zeiger
Dennis McKinney
Eugene Wessel
Douglas Schildmier
Dr. Robert Anderson
Rudolph Kather
Jason Nierman

Alpha Chapter - \$7350

Concordia Club
Edward Bucnis
Jeff Berg

Wittenberg Club
Don Bienfang MD
Keith Kopf
Robert Mulch Jr
Robert Herschbach
Gregory Wyss
Dale Heinkel
Richard Remmert
James Schraidt
Judge Lloyd
Karmeier
Robert Bloechle
Rev. Jerry
Nuernberger
John Buhner
Robert Reding
Douglas Phares
Donald Tappendorf
Thomas Bruns
Thomas Hecht
Harold Downing
Ralph Folkerts
Bruce Heins
Chris Jensen

Patron

Bruce Bockelman
John Foote
Robert Kunkel

Membership Levels

Founders' Society: \$500+
Concordia Club: \$250-\$499
Wittenberg Club: \$100-\$249
Patron: \$60-\$99
Member: \$30-\$59
Donor: \$1-\$29

Randall Fiones
Daniel Friend
Eric Christiansen
Joseph Doninger
John Dodge
Robert Stephan
Kenneth Rathert
James Blankenburg
G. Mark Bornemann
Brian Otto
Kevin Kothe
Curtis Bergmann

Member

Paul Rescino
Kirk Meyer
Kevin Hannel
Arthur Brosius
John Ellison
Gary Showers
Norman Siekman
Dennis Wendte
Stuart Young
Timothy Tappendorf

Eldon Ahner
Bill Bunte
Randall Ehlers
Scott Shimel
Dr. Jon Vogel
Gerald Skoglund
Eldon Mattick
Daniel Jensen
Richard Henrichs
Mark Helmke
Gary Funke
Terry Brakhane
John Holtz
Lee Yarbrough
Ardell Nease
Mark Haertling
Steven Geske
Daniel Jenkins
Roger Fliege
Thomas Jacky
Richard Heinkel
Michael Kesselmayr
David Scheiter
Gary Best

Norman Eilertsen
Robert Reierson
David Nuernberger
Thomas Mulch
Carl Papp
Dale Crall
Roger Caruana
Mark Vitalis
Hoffman
Jerald Borchers
Kevin Donoho
Donald Metzler
Scott McKorkle
Carl Weers
Gary Weimer
Wade Harrison
Matthew Berg
Noel Manhart
Larry Heyen
Bradley Peterson
Robert Merod
John Seever
David Ward
Dale Wachtel
Roy Wendte
Steven Burrow
A. Mark Dettman
James R. Pitman
Bruce Petersen
Donald Sommerfeld
Mark Keel
Thomas Fricke
William Curtis
Gary Clack
William Hartman
Robert Hotton



BΣΨ

Richard Guhl
 Norman Voss
 Steven Magnusen
 Thomas Speckhard
 Mark Janson
 Mark Mulholland
 Albert Grathwol
 Delmar Kloeker
 Mark Laubenstein
 Ronald Otte
 Clifford Greive
 Steven Hankel
 Harvey Minas
 John Frischie
 Curtis Fiene
 Loren Felten
 Steven Yoder
 J. Ryan Joiner
 Michael Lembke
 Donald Donham
 Robert Herrold
 Gregory Turner
 Bruce Libey
 Michael Murnan
 Robert Hoch
 Lcdr. Dennis Schepman
 James Harless
 Neil Nolting
 Kurt Kolseth
 Paul Seehausen
 Dr. Jeffrey Hollis
 Gary Felger
 Dr. Leland Otte
 Daryl Cutter
 William Hitchens
 Thomas Pottschmidt
 Stanley Koehlinger
 Michael Schuller
 Robert Frey
 Matthew Helm
 Andrew Simerman
 Dale Baldauf
 Nicholas Whitney Jr
 John Cooke
 Chris Shaw
 Rev. Phillip Squire
 John Walmsley
 Kevin Brueck
 Mark Shaw
 Joseph Allen
 Dr. Edward Sommers
 David Siems
 Dr. John Thomsen
 Henry Resner
 Michael Leininger
 Kevin Mickley
 Tim Menke
 Jeremy Bannwart

Donor
 William Braun
 Timothy Bonitz
 Ted Finke
 Bryan Ohning MD
 Guy Nipper
 Bernard Jump
 John Lerner
 Charles Lammert

Larry Dennis
 Richard Krampe
 Jerry Bode
 Jeffrey Matsuoka
 Alan Lenz
 Scott Kammeyer
 Thomas Dierking
 Dale Bultemeier
 Dr. James O'Callaghan
 Michael Hallien
 Daniel Hahn
 Michael Muhl
 Richard Blank CLU
 Larry Bieberich
 James Schuller
 Richard Wessel
 Peter Hess
 William Polster
 Brian Scheidt
 Werner Steinbeck
 Allen Thieme
 Albert Schnaible
 Edward Laughlin
 Roland Teuber
 William Plaehn
 Scott Bosecker
 Reid Westphal
 William Otto
 Brian Hott
 Lester Peters
 J. David Massey
 William Mellencamp
 William Vonderau
 Eldon Erdmann
 John Biermann
 John Bachmann
 Bryan Schroer
 Jerry Judt
 Robert Vaughn
 Prescott Snyder

Delta Chapter - \$8332

Founders' Society
 Scott Gesell
 John Johanson

Concordia Club
 Lee Anderbery

Wittenberg Club
 Gregory Gesell
 Dr. Douglas Peter
 Donald Kroeger
 Delmar Toebben
 Jay Holle
 Kurt Grabenstein
 Del Lienemann Sr
 Mark Stelzer MD
 Douglas Martin
 Dennis Stelzer
 Steven Janssen
 Terry Christensen
 Mark Hahn
 Grant Peters
 Paul Lienemann
 Dr. Kenneth

Barjenbruch
 Frederick Chael
 Martin Dunklau
 Richard Dunklau
 William Cordes
 Lawrence Ebner

Patron
 William Engelkemier
 Douglas Milbourn
 Burton Holthus
 Roy Josoff Jr
 James LaRue
 Ross Nelson
 Harold Gloystein
 Philip Johnson
 Robert Seidel

Member
 Oliver Block
 Rupert Dunklau
 Robert Blobaum
 Ralf Zierott
 Roger Meyer
 Dr. Willis Mundt
 Stanley Miller
 Edward Kaiser
 Gary Sprague
 Arnold Firnhaber
 Blaine Johs
 Marvin Johnson
 Carl Carlson
 Sean Peters
 Douglas Willoughby
 James Monson
 Larry Middendorf
 Karl Bamesberger
 Ike Walter
 DeVere Blomberg
 James Peterson
 Jim Hoppner
 James Riha ESQ
 David Arnold
 Louis Sprandel
 Douglas Meyer
 James Werkmeister
 Terry Drost
 Leo Bedke
 Boyd Stuhr Jr
 Rev. Irvin Briese
 Lance Bloedorn
 Tobin Beck
 Richard Anders
 Alan Bauer
 Ronald Taylor
 Steven Anderson
 Ronald Jessen
 Dale Larsen
 Carl Sieffken
 Keith Arndt
 Mark Sandeen
 H. James Tonjes

Craig Boche
 Gary Stevens
 Arnold Glesmann
 David Henry
 William Hermsmeyer
 Dean Scheer
 Robert Reed
 Jack Scholz
 Oliver Weber
 Roland Groteluschen
 Harold Hormann
 Dr. Bradley Gloystein
 Steven Mahnke MD
 Don Fritson

Donor
 Bruce Fischer
 Michael Cloeter
 Rev. Scott Klemsz
 Don Doescher
 Jerry Gloystein
 Frank Mann
 Theodore Vahl
 Wendell Peters
 Ralph Knepper
 RAdm. Narvin Wittmann
 Gilbert Kufahl
 Andris Antoniskis MD
 Warren Ebner
 Paul Syverson
 Blaine Jelden
 Kevin Bosworth
 Richard Sundermann
 Rev. Robert Mortvedt
 Gregory Frerichs
 Robert Baumann
 Robert Schultz
 John Bredthauer
 Ronald Gierhan
 Dale Anderbery
 Randall Peterson
 Harry Kammerlohr
 Elroy Schlake
 Rev. Keith Knippenberg
 Harlan Broekemeier
 Richard Ostwald
 Douglas Hartmann
 Paul Steinke
 Milbert Grummert
 Brad Gardels
 Willard Spech
 Jeffrey Jorgensen
 Charles Sindt
 Terry Piening
 David Schroeder
 Daniel Meyer
 Leroy Kramer
 Carl Huebner

Epsilon Chapter - \$8540

Founders' Society
 Rodney Thompson
 Duane Grummer

Concordia Club
 Keith Axtell
 Darryl Jahn

Wittenberg Club
 Larry Orcutt
 Dr. David Flatt
 Rudolf Herrmann
 Donald Eggerling
 William Winkelman
 Richard Larson
 Verne Weiss
 Erick Michel
 Lloyd Sievers
 Steve Vander Sluis
 Scott Herren
 Scott Brunscheen
 Guntis Sraders
 Larry Anderson
 Eugene Heiman
 William Jentzen
 Richard Harrison
 Charles Puckett
 Darrell Fienup
 Drew Retz
 Eric Larson
 Joel Peterson
 Rodney Backhaus

Patron
 E. Bradley
 Huedepohl
 Brian Meyer
 Edgar Dorow
 Kent Dvorak
 Eldo Schornhorst
 Jedrey Baumann
 Kent Lage

Member
 Richard Noble
 Jerald Johanson
 Stuart Bruzek
 Richard Hansen
 Ralph Huedepohl
 Leland Gayer
 Michael Helland
 Larry Andersen
 Daniel Morey
 Mark Anderson
 Michael Peterson
 Kenneth Hansen
 Andrew Tank
 Alvin Petersen
 David Mullins
 Lowell Vander Hamm
 Craig Lohmann
 Jason Lantz
 Gary Kratz
 Steven Christiansen

Harold Hoffman
 Laurence Lassen
 Dennis Munson
 Gerald Grau
 Mark Olson
 Elden Niemeyer
 Douglas McKechnie
 Arlen Schrum
 Otis Sunderman
 Norbert Dorow
 David Brown
 Lynn Anderson
 Richard Schuman
 Scott Sump

Donor
 Laverne Patterson
 Charles Pallas
 Gary Noble
 Richard Faas
 Gary Johnson
 Wesley Lage
 Russell Schuchmann
 Ronald Faas
 David Bowman
 Wayne Kramer
 Johann Willers
 Donald Schramm
 Dennis Licht
 Scott Kreiter
 Mark Rutz
 Shawn Mansfield
 Edward Semrud
 Gerhardt Dohmeier
 Robert Taube
 Roderick Benjamin
 Brian Keys
 Rodney Torkelson
 Steven Hamann
 Galen Doyle
 Robert Kohnke
 Jeffrey Kester
 Mark Rickers
 Brad Olson
 Donald Heisler
 Richard Oehlsen
 Keith Leitich
 Roger Halverson

Zeta Chapter - \$6000

Founders' Society
 Paul Mellring

Concordia Club
 Norman Wilms
 Kenneth Bender
 Larry Edwards

Wittenberg Club
 David Haake
 Roger Diekmann
 Keith Janne
 Dr. Tim Millsap
 Larry Wolgast
 John Mein
 William Martens
 Lyle Rasmussen

John Reynolds
Steven Schultz
Frank Klema
Daniel Reith
Michael Wyland
Michael Buxton
Harold Dorssom
Michael Dove
Larry Erickson
Dr. Howard Erickson
Haven Rolander
David Jackson

Patron

William Ziegler
Larry Dannenberg
William Jorns

Member

Guy Swanson
Galen Doud
Reece Laurie
Keith Eggert
Dwayne Kroening
Dr. Richard
Kohlschreiber
Wilber Voss MD
Gary Janke
Steven Mein
Bradley Brunkow
Laurel Davis
Gregory Lucke
Douglas Wolters
Victor Bohling
Michael Raymond
Bentley Skeie
Stephen Green
Greg Myers
Jerry Meng
Kim Janne
Kevin Elm
Oliver Hemmann
Donald Froelich
Franklin Ahrens
DVM
Matthew Kliewer
Ronald Hagerman
Alan Peitsch
Ellerd Niemeyer
Melvin Callabresi
Dwight Kruse
Merlin Hackbart
Peter Mueller
Joel Mueller
Stuart Puls
Allen Moon
John Terrill
Walter Dietz
Oscar Albrecht
Merle Soeken
Robert Kuhn
Dennis Lehmann
Billy McDaniel
Gary Neuschafer
Thomas Henrichs
Raymond Koenig

Donor

John Ochsner
Joseph Mines

Scott Johnson
Lawrence Bullinger
Norman Elliott
Douglas Helmke
Donald Brinkman
Earl Holle
Wayne Lawrence
Keith Bryan
Garry Smith
Irvin Kroenke
Donald Kaiser
Clifford Ascher
Timothy Miller
Philip Jorns
Blake Wilson
Scott Jundt
Dean Miller
William Maskus
Mark Schneider
Roger Zerener
Jason Davis
Dwight Becker
William Baehr
Scott Fisher
Randall Carlson
Leslie Olsen
Gary Frieling
Alan Hagerman
Steven Kuhlman
Scott Wise
Laurence Miller
Craig Hansen
James Farrar
Wilfred Lehmann
Robert Lenkner
Norman Sawyer

**Eta Chapter -
\$12,155**

Founders' Society
Kenneth Voertman
Steve Panhorst

Wittenberg Club

Michael Roth
Gary Koenig
Wayne Schuessler
William Kolnik
Jeremy Murrish
Bob Norris
Matthew Roos
Christopher Currie
Keith Konradi
John Spencer
Mike Ochonicky
Steven Rinne
Paul Eggers
David Goldammer
Richard Schrieber
Matthew
Bremmerkamp
D. Adam Wilcox
Captain Eric Goser
David Shafer
Stephen Tempe
Arthur Giesler
Al Panhorst
David Kuhn

Patron

Steven Jackson
Roy Wollgast
Matthew Schaefer
Clarence Ellebracht
Jr
Jerry Vie
David Berg
Ralph Lilienkamp
Timothy Spyers
Kenneth
Kuechenmeister
Michael Grasch
Douglas Baldwin
Mark Bruss

Member

David Meier
Peter Sauer PhD
Peter Sanocki
Wayne Rostek Jr
Curt Wegener
David Schlarman
David Liescheidt
James Shildmyer
Melvin Finke
Gerald Wiegmann
R. Gary Schmaltz
Richard Jackson
John Winkelmann
Jim Boyanchek
Lester Brockmann
Anthony Seris
Timothy Kaiser
John Heidbreder
James Winkelmann
Jeffrey Forehand
Jason Welker
William Mannecke Jr
James Peuster
James Sutton
Ronald Mueller
John Weiler
Kirt Stage-Harvey
Jeanne Panhorst
Richard Schmelig
Daniel Elze
Robert Branchof
Paul Egan
Matthew Wehmeyer
Clint Stanerson
Elmer Kraemer
Donald Fleming
Ralph Luebke
Dennis Hartman
Bradley Biggers
Ronald Grebing
John Komlos
Neil Vandermeulen
H. Robert Springer
Dennis Kinchen
James Janssen
Eugene Kolb

Donor

Leonard Roth
Jack Weber
Alan Hasselbring
Rex Brown
Curtis Skouby

Robert Roussin
Marc Schrank
Mark Schoedel
Gerald Rullkoetter
Glenn Mertz
Russell Goldammer
Karl Ziegler
William Ehrhard
Richard Hoenerhoff
Bruce Litzsinger
Charles Ericson
Norman Meyer
Edwin Stevens
William Decker
Michael Wahls
Wayne Benitz
Gary Jones
Leland Hahnel
Robert Kramer
Allen Behring
Robert Wussler
Michael Weidner
David Bruegge
Andrew Bauer
John Steimley
Jeffrey Wickell
Robert Perko
Leo Mankovich
Raymond Ehrhard

Theta Chapter*Member*

James Dixon
William Vasilauskas

Donor

Kenneth Pedde
John Koskela

**Iota Chapter -
\$6030**

Founders' Society
Craig Varner

Concordia Club
Joseph Potts

Wittenberg Club

Timothy Allen
Warren Pflantz
Jan Niezing
Dennis Mall
Warren Harms
Kenneth Haubein
Ltcol David Kluegel
Ch. (Maj.) Scottie
Lloyd
William Pffaff
Kenneth Mall
Roger Plackemeier
Joe Strickert
Kenneth Reiter
Alan Rowold
Eric Verseman
Dennis Boehne
Kevin Christ
Keith Dierberg
Robert Finck

Terry Greiwe
Merle Schnelle
Jim Hecht
Kevin Tullberg
Ronald Price
Bruce Knoernschild
Scott Fiehler
Ronald Kuker
Roy Ray

Patron

Michael Potts
Loren Lumpe
Timothy Weinstock
Terry Kaempfe
Dr. George Duensing
Jr
Walter Els
Michael Gessel
Keith Walters
Roger Flandermeyer

Member

Robert Glock
David Heisterberg
Steven Stadelman
John Kansteiner
Steve Burchard
Michael Hanna
Dennis Graham
Arthur McLaughlin
Thomas Keel
Jerry Schnelle
Timothy Jackson
John Wussler
Daniel Fuller
Thomas Hohenstein
Mark Harms
Morris Heitman
David Lieb
Jonathan Riethmeier
William Howell Jr
Jeff Jungermann
Edward Warmann
James Dunkmann
James Appelquist
Philip Willbrand
Rev. Paul Hoemann
James Schaper
John Trautmann Jr
Nils Olson DO
Stewart Wirth
Jonathan Siebrasse,
DDS

Donor

David Moentmann
Rev. Dennis Heck
Paul Schnare
Donald Krusemark
Charles Kuntz
Donald Paske
Brent Toellner
Jonathan Rolf
Warren Mayes
Kim Nelson
David Hoehne
Timothy
Knoernschild

**Kappa Chapter -
\$550**

Wittenberg Club
Bruce Boeder
William Kurschat

Patron

Rev. Rodney
Anderson

Member

Donavon Hess
John McClurg
Rev. James Walburg
Gerald Sietsema
Ronald Ortlip
Curtis Durand

Donor

Dr. Harry Huxhold
Wayne Benbow
Lloyd Vollmers

**Lambda Chapter -
\$410**

Wittenberg Club
Philip Roekle
Richard Monrad

Patron

Larry Osburn

Member

Douglas Seeley
C. Mack Martin

Donor

Brian Steinke

Mu Chapter - \$340

Wittenberg Club
Bob Hillard

Member

Michael Baum
Robert Mattheessen
Dyke Hanson
Dr. Erich Herbst

Donor

Russell Wieneke
Roger Heitman
Donald Tate
Richard Eickmeier
Everett Freeberg



Nu Chapter - \$220

Douglas Spray
Daryl Hintz

Member

Christopher Hahn
Karl Schoettlin
Charles Casebier
Marvin Bredehoft

Donor

Terry Moran
John Larson
Mark Steinmetz
Gary Anderson

Xi Chapter - \$710

Wittenberg Club

John Rohwer
Dale Timmons
Christopher Troester
Dale Filsinger

Member

Timothy Vannoy
Steven Christensen
Kent Monter

Donor

Roger Coon
Keith Martin
Steven Harms
Paul Bloom
Kurt Harmony
Randall Petersen
Mark Larson

Omicron Chapter

Wittenberg Club

Ronald Iseler

Member

Dale Pfeiffer

Pi Chapter - \$275

Patron

William Loesch

Member

David Lenz

Donor

Michael Vogt
William Minford
Mark Reiter
Chris Gilman
Leslie Wolpers
Howard Shaw
Captain James Sall

Rho Chapter

Member

Terry Wangen

Donor

Daniel Vikstrom
Douglas Ruud

Sigma Chapter

Donor

David Noyes

Tau Chapter - \$370

Wittenberg Club

Steven Grundmann
Roger Bentz

Member

Bruce Lohse
Michael Geihlsler
Kerry Siegfried
David Nightingale

Upsilon Chapter - \$710

Concordia Club

Brian Freese

Wittenberg Club

William Schuyler

Patron

John Gehrke
Kevin Carriere

Member

David Johnson
Todd Coleman
Rev. Chad Lueck
Todd Klietz
Steven Barnett

Donor

Scott Stephens
Scott Stavnes

Phi Chapter - \$370

Wittenberg Club

William Bosshard
Christopher Carlsson

Patron

Robert Broussard
Terrell Miller

Member

Clay Fancher

Donor

Gavin Biehle

Thank You!



Zeta's 50th Planned, Linemann Award Possible

Zeta Chapter will celebrate its 50th Anniversary March 9 - 11, 2001. The Chapter has a challenging goal to raise \$50,000 by that date, with plans in place to match the first \$10,000 through generous pledges from alumni and friends.

The Alumni Chapter has established a leadership team to lead alumni in contacting other Zeta members from pledge years by decade. Contributions can be sent to Alumni Treasurer Don Kaiser at 12408 West 126th Street, Overland Park, KS 66213. Alumni contributing \$500 or more will be recognized at the 50th Anniversary banquet with a special polo shirt commemorating the occasion.

Several aspects of the celebration are already underway including plans by Norm Wilms to update the Zeta history and a series of mailings to invite alumni to the event.

Planned activities begin Friday night from 8 to 10 p.m. with a reception at the Chapter House and an opportunity for alumni to check out the great facilities supported by efforts of both the Active and Alumni chapters.

Saturday will feature opportunities to tour the campus, take in a round of golf at the newly completed Colbert Hills course and many other activities. Lunch will be served at noon in the newly renovated K-State Student Union Ballroom. The featured speaker will be either University President John Wefald or Provost James Coffman.

The Alumni Chapter will meet from 1:30 to 2:30 in the afternoon with a concurrent ladies program in the Cats PAuse Lounge at the Union. At 2:45 p.m. everyone is invited to reminisce about chapter memories then proceed to a social hour at the Ramada Inn from 4:45 to 5:45 p.m.

Dinner will be the highlight of the night featuring Del Linemann as the keynote speaker. Del was instrumental in the formation of Zeta Chapter coming down from Delta to get the new chapter started.

Sunday morning will include a continental breakfast with an inspirational message followed by worship at Lutheran Churches around Manhattan.

Invited speakers include:

- Kenneth Bender about the organizational beginning of the chapter

- Norm Wilms about chartering
- Jim Jorns and Morman Elliott about the early years at Zeta
- Jim Smith and Larry Edwards about the chapter house at 221 N. Delaware
- Dale Meyer, Larry Dannenberg, Ron Hyso and Bill Martin about the current house at 1200 Centennial Drive

Speakers have also been invited to reminisce about recent decades and the changes in Zeta Chapter over the years. These include:

- Marvin Sessler, Jerry Meng, Mike Dove and Phil Krug for the 1970s
- Brian Smith, Paul Mellring, Phil Niguis and Tim Jorns about the 1980s
- Ryan Ricker and Matt Wolters about the 1990s and Walt Dietz to discuss the renovation efforts
- and Dirk Ricker for 2000.

The planning committee has set a goal of 30 percent of all active members and 80 percent of past presidents and recruitment chairs in attendance at the event. Please mark your calendars for this important weekend.

For additional information, contact Larry Erickson or Norm Wilms. Erickson can be reached at 408 Wickham Road, Manhattan, KS 6502. He can be reached by phone at (785) 539-4424 and by e-mail at lerick@ksu.edu. Wilms can be reached at 3133 S.W. 31st Court, Topeka, KS 66614. His home telephone is (785) 272-1339.

Linemann in Process

Zeta Alumnus Dave Jackson was nominated and approved by the National Board of Directors at its August meeting for the Linemann Award. The award application is under review by the Linemann Committee who makes the final selection of awardees. Pending approval of the award, plans are underway to present Jackson with the honor at the 50th Anniversary Celebration.

Jackson has consistently supported Zeta Chapter through his involvement at both alumni and active levels and is a recognizable figure in the chapters recruitment efforts.

Jackson has also held national office and been a regular resource to the National fraternity offering his time, resources and even storage space for national records.

Iota Alumni Look to the Future: Repairs and Renovation

After months of research, the Columbia Alumni Association, the Iota Chapter Alumni group, held a special Board meeting in mid-September to focus on housing issues and the future. The Board authorized two emergency repairs, and laid the groundwork for a long-term renovation and operating plan by instituting a Strategic Planning Committee.

An Alumni Housing Committee, charged this past Spring with looking into various options, discovered over the Summer that the Chapter's boiler was not repairable and was by all accounts begging to be put out of its misery, necessitating an immediate replacement. The job also required flue and chimney repairs to maintain safety and efficiency.

"We really had no choice but to replace them," said Alumni Planning Manager Tim Rassbach. "Unfortunately, the timetable we're looking at demanded that the Board take emergency action to right the situation prior to Homecoming. If we didn't do it right away, the house wouldn't have heat until Finals Week." Rassbach added that the new system will be much more efficient, a fact that will ensure lower energy costs.

The urgency of the heating repairs caused the Board to act quickly, advancing the timetable that was being developed by the Housing Committee by several months. "We would've like to have waited one more winter, but there was no quick fix. Repairing the boiler just wasn't an option," remarked Tim Rassbach.

Beyond the immediate repairs, other early findings of the Housing Committee caused the Board to pick up the pace of the planning process by creating a Strategic Planning Committee. Headed up by Paul Himmelsbach, the committee will develop a plan to pursue remodeling and construction options, while looking at setting up a fundraising campaign. The committee is also charged with overhauling the operations of both the Alumni and Active Chapters while building the membership of both.

"I think the Boiler situation prompted the Alumni Board to acknowledge its lack of a true plan for the future," commented Jason Baner, Housing Committee Chairman and Alumni Board Member. "We have some great options facing us and now it's time to make some real decisions. The Strategic Planning Committee is the best way to do that because it encompasses everything from Rush to renovations."

The early 1990s were rough on the Iota Chapter, but with financial crises behind them, the Alumni look to take control of their own destiny. "For far too long the Alumni have not been active-

ly involved in planning for the future of our organization," said newly elected Board Member Phil Bertels. "We've been reacting to problems as they arise and we've met every challenge, but that's not the way to run an organization. The Alumni group should be proactive, not reactive. We need a long term plan to see problems coming and to plan for the future."

"The key is to set attainable goals and to put the right people in place to meet them," stated Chairman Himmelsbach. Following that philosophy, the Strategic Planning Committee is in the process of setting up a five-year plan that includes goals for both the Alumni and Active chapters. The plan will cover everything from Rush to building renovations, addressing immediate concerns while laying out a framework for the future.

"Our focus is two-pronged," said Jim Gwinner, Alumni Board President. "First, we need to reorganize and strengthen our Alumni Association, improving participation and, quite frankly, donations. And secondly, we need to work out a housing and operations plan that is focused on our future."

"We don't like to think that we compete with other fraternities, but we do," remarked Board Member Brent Toellner, who added that six or seven other fraternities had either undergone complete renovations, or built new, in the last few years.

The last major alumni-backed remodeling of the current Iota Chapter House occurred in 1984-85 when communal bathrooms were installed on the upper floors of the house. The first floor has had minor facelifts every few years, but the overall house itself hasn't seen any real renovation since Beta Sig moved in to the building in 1967. "To stay competitive on campus," said Chapter President Kyle Clower, "Iota must remodel and soon." The Iota Alumni second that statement, and want to ensure that they have a fraternity house for the 21st Century. "That means looking at air conditioning options, electrical systems, renovation, moving, or even building new," said Rassbach. "Right now we're looking at all of these things."

The Strategic Planning Committee will meet at least once a month and hopes to have concrete options for the Alumni to consider at next Spring's Pig Roast. "We are in a very strong position right now," added Gwinner. "We have some very exciting options in front of us. Ten years ago we we're talking about closing the House and now we're arguing over driveway repairs. It's a time to build for the future after a few years of set back. I invite everyone to get involved."

Alumni Fundraising is Lifeblood for Housing

While active chapter rent provides a (mostly) stable resource for cash flow, alumni fund raising is still the heart and soul of any successful housing program.

A well planned and executed alumni fund campaign can provide up-front capital as well as residual income from long-term pledges. With many chapter facilities in need of updates, and others updated through mortgage loans, the need for alumni funds is at an all-time high.

Whether alumni can offer a large donation or just a few dollars a month, regular contribution plans can place a firm financial footing under Beta Sig chapters.

"A lot of alumni can make contributions both large and small to support housing needs," said Craig Varner, immediate past president. "The catch is our alumni boards have to contact the members, make a solid case for the support, then follow through with alumni programming to rebuild ties

between alumni and the chapters."

"We owe a debt of gratitude to past alumni donors, but we have to always search for new donors to sustain our housing funds," said Varner.

Alumni should contact chapter boards for advice on making contributions at the chapter level, or the Housing or Educational Foundation for contributions at the National or chapter level. Thank you to the many alumni already showing their support.

2001 UIFI Scholarships

by Kirk Meyer, National President

Scholarships for 10 undergraduates will again be applied for from the Educational Foundation. The National Fraternity pleased to inform everyone that Beta Sigma Psi is a leader in providing scholarships to our undergraduates for UIFI.

Many larger fraternities and sororities offer fewer scholarships than Beta Sigma Psi, and far fewer on a per capita basis. Many thanks to the Educational Foundation for it's continued support of these scholarships, and thanks to alumni who help support the Educational Foundation through donations.

The National Fraternity strongly encourage undergraduates to pursue attending the UIFI. Every person who has attended from Beta Sigma Psi returned with great reviews and a drive to improve the chapters. Eleven Beta Sigs have attended UIFI since 1999, and the positive effects can be seen in their chapters.

Applications for the scholarships will be available from the National Headquarters once the actual UIFI applications are received from NIC in January.

Convenient Sessions

Once again, the NIC will be offering 10

UIFI sessions for undergraduate leaders to attend this outstanding institute. The focus

of this year's curriculum will be on helping undergraduates transform their fraternity/sorority communities through values based action. Hands-on learning activities will again be a priority.

The Undergraduate Interfraternity Institute is a five day program held in at Indianapolis area universities for undergraduate leaders of fraternities and sororities. The program focuses on values based action, leadership, values clarification, community commitment, change, and future development of fraternities/sororities. The program is in its 12th year and has more than 5,000 graduates.

Sessions have been intentionally scheduled in order to provide students with a number of options to arrange their summer work, internship, and summer school schedules.

The dates for the five-day sessions range from May 19-23 to July 25-29. Applications for fraternity/sorority leaders will be available beginning January 15, 2001.

UIFI 2001 will be held on the campuses of Butler University and Purdue University.

Epsilon to Host Nat'l Basketball Feb. 24

The National Basketball Tournament is on the horizon, this year hosted by Epsilon Chapter in Ames, IA. This year the tournament will be held in conjunction with the annual Membership Education Forum.

The event is planned for February 24, 2001. The day will lead with the MEF, this year a condensed focus on issues such as alcohol policies and recruitment for older members and brotherhood building activities for younger members. Many of these activities will mirror activities used at the Undergraduate Interfraternity Institute where Beat Sig has sent active leaders for the apst several years. (See related sotry on page

Dinner is planned following the tournament. The chapter house can accommodate some members, but area hotels are highly encouraged. For additional information, contact Chad Winterhof or Alex Scott. Contact information is:

Alex Scott
alfro@iastate.edu
515-292-3600
Chad Winterhof
cewinter@iastate.edu
515-292-6372

National Basketball Tournament Registration

The National Basketball Tournament will be held at Epsilon Chapter (Iowa State University) on February 24, 2001 in conjunction with the Membership Education Forum. There will be a \$40 dollar entry fee. This includes the facility and jersey rental, and referees. T-shirts will also be available for \$12 each.

Name: _____ Chapter: _____

Home Address: _____

Phone: _____ E-mail: _____

How many teams will you bring (\$40 per Team): _____

List the number of sizes you want for T-Shirts (\$12 per T-shirt) XXL ____ XL ____ L ____ M ____

Make checks payable to Beta Sigma Psi and send checks to:
Alex Scott (alfro@iastate.edu/515-292-3600)
Chad Winterhof (cewinter@iastate.edu/515-292-6372)
223 Lynn Ave
Ames, IA 50014

Alumni News

Tim Russ (Alpha '88) and his wife celebrated the birth of a daughter July 20, 1999. They recently moved to Wisconsin Rapids, WI where Tim works as a Clinic Administrator at Riverview Hospital.

Kenneth L. Birk (Eta '50) passed away November 8, 1999.

Russell G. Henry (Alpha '22) passed away May 14, 1999 at age 94.

Karl Karstensen (Zeta '52) passed away June 18, 2000 at the age of 67. Karl worked at Caterpillar Inc. for 42 years before retiring in 1996. He was credited with nine patents and had multiple papers published by the American Society of Mechanical Engineers and the Society for Automotive Engineers.

Pastor Richard Kapfer, who served as pastor of Memorial Lutheran Church in Ames, IA, is terminally ill with cancer. Currently he is undergoing hospice care at his home in Ft. Dodge.

Pastor Kapfer served as Epsilon Chapter's pastoral advisor from the mid-1970s until 1984.

Cards can be sent to
Pastor Richard Kapfer
2981 15th Avenue NE
Fort Dodge, IA 50501-2127

A Quick Tip Refresher Online Safety

How are you to know when you're being cheap or overly generous when you're out on the town and it comes to tipping people for their services? Unfortunately, there's no rule of thumb. But there are some guidelines for more common situations:

Bartenders, waiters, and waitresses 15 to 20 percent. Tip bartenders at the higher end if they run a tab for you, and tip waiters and waitresses at coffee shops no less than a quarter, even if you ordered just a cup of coffee.

Checkroom \$1 per coat. Add another dollar for packages, umbrellas and briefcases.

Valet parking \$1 in smaller cities; \$2 in large cities.

Bellman At least \$2 if you have only one or two bags; otherwise \$1 per bag. If you get an escort to your room, don't tip him or her. Tip the bellman with the bags.

Concierge Up to 20 percent.

Maid No more than \$2 per night. Give the tip in person, or put it in a sealed envelope marked "housekeeper."

Room Service 15 percent.

Cabbies 20 percent, with a minimum of 50 cents.

Skycaps \$1 per bag

Barbers 15 to 20 percent but never less than \$1.

Obviously that's impossible when online merchants require credit cards to charge payments. But there are ways to protect yourself from giving out too much information when you do buy stuff online. Here are some suggestions:

1. Don't give out your social security number. You take a big risk doing this. If an online store asks for the number, find out if you can give only part of it for identification.

2. Don't fill out warranty cards online. In most states, product warranties are valid by law, even if you don't fill out the form.

3. Read the privacy policy. If the online merchant doesn't have one, walk away. Find out if the vendor sells data to others or gathers it strictly for internal use. If they do sell data, they should offer to let you opt out.

4. Set your Web browser to warn you before accepting cookies or when you send personal information that isn't encrypted. Encryption isn't foolproof, but sending your credit card number through an encrypted line is safer than giving it out over the phone.

Update Yourself in the Gold Rose!

Provide news for future issues of The Gold Rose by filling out this form and mailing it to: The Gold Rose, c/o Matt Kreps, 8334 Carter, Overland Park, KS 66212. Attach additional pages if necessary.

Name: _____ Chapter, Year Activated: _____

Home Address: _____

Phone: _____ E-mail: _____

News you want to share (job changes, family additions, location changes, awards, activities):

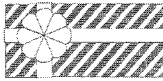
Promote and Support Beta Sigma Psi!

Optional custom lettering:



QUALITY GUARANTEED!

Beta Sigma Psi Fraternity will receive up to \$150 per box when you order your checks with the BΣΨ coat of arms.



Beta Sigma Psi checks make great gifts!

Beta Sigma Psi coat of arms on a classic green marble check with gold border. Greek letters only \$100. Increase your contribution by adding your college or university name, or chapter too!

Order Now! Check Partners, Inc. 1-800-923-2435 (CHEK)

Your check is printed on recycled paper with 40% pre-consumer and 20% post-consumer waste. We print only with biodegradable inks. Each order includes 1-part deposit slips, check register, and recycled checkbook.

ORDER FORM

9BJ10

Name _____
 Day phone () _____
 Enclose with your order:
 Voided check from your checking account.
 Deposit slip from same account.
 Payment check payable to Check Partners, Inc.
 Complete order form for Beta Sigma Psi checks.

Starting number for checks _____
 If not specified, starting number will be 301

200 single checks per box number of boxes _____ x \$15.00 = \$ _____
 150 duplicate checks per box number of boxes _____ x \$15.75 = \$ _____
 Optional: Greek letters number of boxes _____ x \$1.00 = \$ _____
 Old English Script number of boxes _____ x \$2.00 = \$ _____

Indicate college, university, or chapter for text above signature line.
 Limited to 2 lines with 26 characters including spaces. \$2.00 per box = \$ _____

3% sales tax for Colorado residents, non RTD District SUB-TOTAL = \$ _____
 3.8% sales tax for Colorado residents, RTD District TAX = \$ _____

Shipping & handling:
 Bulk mail – allow 4 weeks from receipt of order. \$1.50 = \$ 1.50
 Priority mail – add \$3.10 for every 2 boxes ordered \$3.10 = \$ _____

Total order: (Add sub-total, tax and shipping) = \$ _____
 Mail all items to: Check Partners, Inc., PO Box 621416, Littleton, CO 80162-1416



Beta Sigma Psi SPIRIT

800-321-7747

CRESTED POLO SHIRT

#BSP - POLO EC \$32.95
 Beta Sigma Psi crest embroidered on the heart. 100% cotton polo. Available in navy or white. Sizes: L, XL (XXL \$3 extra)

CRESTED SWEATSHIRT

#BSP - RWC EC \$39.95
 95% cotton heavyweight with full-color embroidered crest. Available in navy or gray. Sizes: M, L, XL (XXL \$3 extra)

HOODED PULLOVER JACKET

#BSP - CRJ EG \$45.00
 Water resistant nylon jacket, cotton lining, drawstring waist. Beta Sigma Psi letters over the heart. Available in navy. Sizes: L, XL (XXL \$3 extra)

BAR HAT

#BSP - BAR HAT \$15.00
 White cotton twill hat, embroidered in red.



CREW CLASSIC

#BSP - RWC 4T \$39.95
 This classic heavyweight 95/5 sweatshirt, two color 4" sewn on letters on the front. Available in gray and navy. Sizes: M, L, XL (XXL \$3 extra)

1925 TRADITION SWEATSHIRT

#BSP - CHMP 1925 \$54.95
 This vintage-style lettered Champion sweatshirt features letters with the 1925 founding date embroidered below. Sizes: M, L, XL (XXL \$3 extra)

CATALOG CODE	ITEM DESCRIPTION	QTY	SIZE	COLOR	UNIT PRICE	TOTAL PRICE

SUB TOTAL: \$6.95
 SHIPPING & HANDLING: \$6.95
 DOMESTIC AND CANADA EXTRA SHIPPING: \$6.95
 EXTRA CHARGES: \$6.95
 TOTAL: \$6.95

MAIL ORDERS TO:
 BETA SIGMA PSI SPIRIT
 639 CENTRAL AVENUE
 P.O. BOX 3006
 PAWTUCKET, RI 02861
 (800) 321-7747
 PLEASE MAKE CHECKS PAYABLE TO: SPIRIT
 PRICES IN US DOLLARS - DO NOT SEND CASH

Beta Sigma Psi Calling Card

- Rates less expensive than traditional AT&T and MCI calling cards, NO SURCHARGE WHEN USED IN CHAPTER CITIES, NO ANNUAL FEE. You pay only for your calls.
- Call from any phone in the USA
- Official program of Beta Sigma Psi, all proceeds from calling card go to help National programs like The Gold Rose.
- Card redesigned with 4 color Greek letters and Crest
- Call 1-800-739-6834 to order

10% OFF ALL MAGAZINE SUBSCRIPTIONS

1. Find the lowest published price for any magazines (including renewal offers).
2. IMPORTANT - Attach the printed price information (or renewal form) to your check.
3. Make check payable to BETA SIGMA PSI for 10% less than the printed price information offered to you.
4. Mail to: Beta Sigma Psi National Treasurer
 P.O. Box 481181
 Kansas City, MO 64148

Chapter Directory

Collegiate Chapters

Alumni Chapters

Alpha Chapter

University of Illinois
706 West Ohio
Urbana, IL 61801
217/344-0676

Iota Chapter

University of Missouri
206 South College Avenue
Columbia, MO 65201
573/449-1185

Alpha (Urbana)

John Schweizer
159N 2540E Rd
Rankin, IL 60960
217-397-2314

Rolla (Eta)

Jonathan Schmidt
430 Oak Tree Drive
Webster Groves, MO 63119
314/968-9729

Beta Chapter

Purdue University
525 University Street
West Lafayette, IN 47906
765/743-9685

Chi Chapter

Ohio State University
1989 Iuka Drive
Columbus, OH 43201
614/294-8956

West Lafayette (Beta)

Andy Ortstadt
1250 Oak Hill Drive
Downer's Grove, IL 60515
630/663-1250

Columbia (Iota)

Jim Gwinner
12948B Bryce Canyon
Maryland Heights, MO 63043
314/275-7742

Epsilon Chapter

Iowa State University
223 Lynn Avenue
Ames, IA 50010
515/292-3600

Psi Chapter

Concordia College-New York
171 White Plains Rd Box 502
Bronxville, NY 10708
914/395-4280

Lincoln (Delta)

Lee Anderberry
5120 Jade Court
Lincoln, NE 68516
402/421-1460

Kansas City Area

Mike Unger
8304 Hillcrest #2
Kansas City, MO 64132
816/333-7439

Zeta Chapter

Kansas State University
1200 Centennial Drive
Manhattan, KS 66502
785/539-7561

Omega Chapter

Indiana University
1395 North Lincoln Street
Bloomington, IN 47408
812/332-5138

Ames (Epsilon)

Mark Anderson
8171 Elm Drive
Morrison, IL 61270-9003
815/ 772-7105

Eta Chapter

University of Missouri-Rolla
2 Fraternity Row P.O. Box 580
Rolla, MO 65401
573/364-8575

Zeta Delta Colony

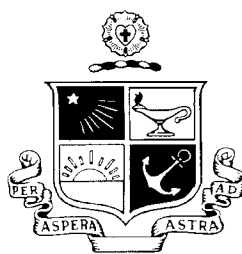
Midland Lutheran College
900 North Logan, Box 370
Fremont, NE 68025
402/721-5487 x3115

Manhattan (Zeta)

Clyde Ricker
565 Avenue N
Raymond, KS 67573
316/938-2545

Beta Sigma Psi Fraternity

c/o Southern Illinois District Office
2408 Lebanon Avenue
Belleville, IL 62221
Phone: (618) 235-0014
Fax: (618) 235-0051
E-mail: office@betasigmapi.org
http://www.betasigmapi.org



NON-PROFIT
U.S. POSTAGE PAID
Kansas City, KS
Permit No. 626

CHANGE SERVICE REQUESTED

Iota Chapter of Beta Sigma Psi
206 S College Ave
Columbia, MO 65201-5022