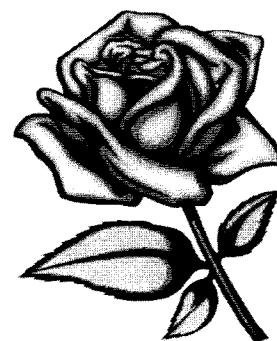


# The Gold Rose

*of Beta Sigma Psi National Lutheran Fraternity*

Volume 47, Issue 1

Spring 2001



*Looking Forward, Looking Backward*

*Beta Sigma Psi Continues to Grow*

## In this Issue:

---

Alpha-Alpha Chartered

---

Zeta's 50th Anniversary

---

Expansion Update

---

National Archives Report

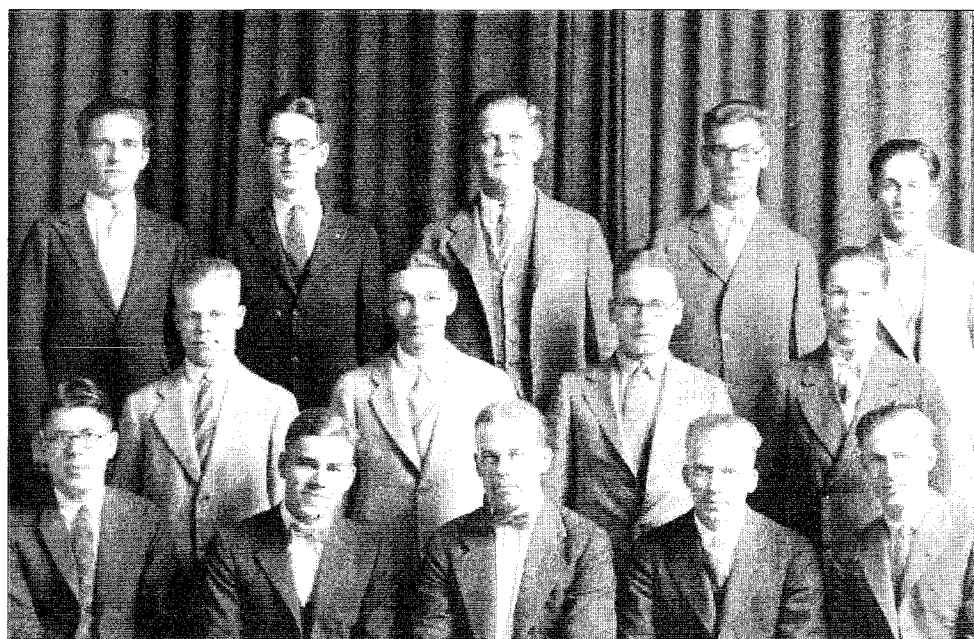
---

Alumni Chapter Growth

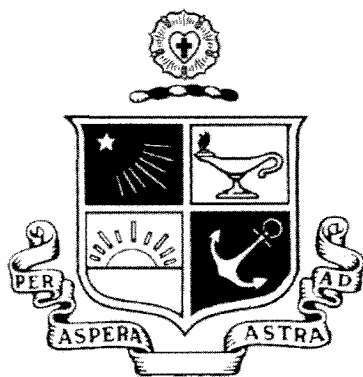
---

2001 Leadership Academy

---



In 1925 the Concordia Club at the University of Michigan stopped for a group picture. A photograph of Pi Chapter recently surfaced in a search of the archives, but the date is unknown. Leads in identifying the date and members in the photograph can be sent to the National Office.



# The Gold Rose of Beta Sigma Psi

Volume 47, Issue 1

*The Gold Rose* is written and distributed by volunteers three times annually. If you would like to contribute articles, photographs, or advertisements, please contact the National Publications Editor.

## National Publications Editor:

Matt Kreps

## Contributing Writers:

Kirk Meyer  
John Hingst  
James Shildmyer  
Rod Thompson  
Norm Wilms

## Beta Sigma Psi Headquarters

c/o Southern Illinois District Office

2408 Lebanon Avenue

Belleville, IL 62221

**Phone:** (618) 235-0014

**Fax:** (618) 235-0051

**E-mail:** [office@betasigmapsi.org](mailto:office@betasigmapsi.org)

**Online:** <http://www.betasigmapsi.org>

**Postmaster:** Send form 3579 to Beta Sigma Psi Headquarters, c/o Southern Illinois District Office, 2408 Lebanon Avenue, Belleville, IL 62221.

**Parents:** Your son's magazine is sent to his home address while he is in college. If he is no longer in college and not living at home, please send us his new permanent address.

## National Board of Directors

### National President

Kirk Meyer  
3836 Tanbark Drive  
Swansea, IL 62226  
618/257-2474  
[president@betasigmapsi.org](mailto:president@betasigmapsi.org)

### Treasurer

Del Karmeier  
P. O. Box 481181  
Kansas City, MO 64148  
816/942-4666  
[delkarm@aol.com](mailto:delkarm@aol.com)

### Immediate Past President / Interim Expansion Director

Craig Varner  
2143 Victory Garden Lane  
Tallahassee, FL 32301  
850/656-6695  
[past-president@betasigmapsi.org](mailto:past-president@betasigmapsi.org)

### Recruitment Director

Jeremy Murrish  
38 Meditation Way  
Florissant, MO 63031  
314/972-8987  
[recruitment@betasigmapsi.org](mailto:recruitment@betasigmapsi.org)

### Scholarship & Membership Education Director

Jon Riethmeier  
983 Rue De La Banque, Apartment B  
Creve Coeur, MO 63141  
314/989-1417  
[education@betasigmapsi.org](mailto:education@betasigmapsi.org)  
[scholarship@betasigmapsi.org](mailto:scholarship@betasigmapsi.org)

### Senior Vice President

Steve Lapinski  
569 Katgrio Street Apt. G  
Columbus, OH 43206  
614/221-3036  
[srvp@betasigmapsi.org](mailto:srvp@betasigmapsi.org)

### North-Central Regional Vice President (Epsilon, Alpha Alpha)

Tanner Ehmke  
3202 Valleywood Drive  
Manhattan, KS 66502  
785/537-3147  
[ncrvp@betasigmapsi.org](mailto:ncrvp@betasigmapsi.org)

### Interim Executive Director

Rod Thompson  
753 Deer Creek Road  
O'Fallon, IL 66269  
618/628-8806  
[exec-dir@betasigmapsi.org](mailto:exec-dir@betasigmapsi.org)

### Mid-Central

#### Regional Vice President (Alpha, Beta, Chi)

Carl Hasselbring  
9832 Afton Place  
St. Louis, MO 63123  
314/353-4775  
[mcrvp@betasigmapsi.org](mailto:mcrvp@betasigmapsi.org)

### Publications Editor

Matt Kreps  
1612 Hartford Drive  
Carrollton, TX 75007  
913/271-3097  
[publications@betasigmapsi.org](mailto:publications@betasigmapsi.org)

### South-Central

#### Regional Vice President (Zeta, Eta, Iota)

Chad Winterhof  
223 Lynn Avenue  
Ames, IA 50014  
515/292-3600  
[scrvp@betasigmapsi.org](mailto:scrvp@betasigmapsi.org)

### Pastoral Advisor

Rev. Jeff Moore  
Concordia Seminary • St. Louis  
801 Demun Avenue  
St. Louis, MO 63105  
314/505-7224  
[pastoral-advisor@betasigmapsi.org](mailto:pastoral-advisor@betasigmapsi.org)

### Supplemental Foundations

#### Beta Sigma Psi Educational Foundation Chairman

Steve Panhorst  
1220 East Silverwod Drive  
Phoenix, AZ 85048  
480/460-3424  
[steve@panhorst.net](mailto:steve@panhorst.net)

### Mid-Atlantic

#### Regional Vice President (Psi, Omega)

Matt Terry  
1989 Iuka Avenue  
Columbus, OH 43201  
614/294-8956  
[marvp@betasigmapsi.org](mailto:marvp@betasigmapsi.org)

#### Beta Sigma Psi Foundation Chairman

John Hingst  
1710 West Mulberry Street  
Kokomo, IN 46901-4272  
765/452-5351  
[jhingst@midambev.com](mailto:jhingst@midambev.com)

### Alumni Affairs Vice President

James Schildmyer  
12714 Cherokee Lane  
Leawood, KS 66209  
913/491-4593  
[alumnivp@betasigmapsi.org](mailto:alumnivp@betasigmapsi.org)

# **President's Corner**

## **Kirk Meyer, 25th National President**

It's an interesting phenomenon. I've seen it many times and in being involved at the National level, I've seen it in multiple places. I don't have a really catchy name for it, but I'll call it "The Diploma Effect." And it is a phenomenon, because it seems to strike its victims suddenly, without warning, and they don't even realize that they have fallen victim to it.

I'm sure many of you are actually familiar with the diploma effect. So many, many Beta Sigs have passed through our ranks, extremely active, with strong brotherhood, and a gung-ho spirit through their college years. But suddenly, as soon as they receive that diploma, they practically drop off the face of the earth, at least from an involvement standpoint. Why does this happen? That's what makes it a phenomenon.

I can't even begin to think of how many chapter meetings and alumni meetings I've been in through the years where actives will say "Why don't the alumni do this?", or "How come the alumni don't have the money to do that?" or the favorite "Our house is falling apart and our alumni don't seem to care to fix it so we have a decent place to live." Then the alumni advisor or alumni board tries in vain to come up with an explanation as to why only a handful of alumni keep in close contact and provide enough support among them just to get by.

It's a very difficult and sad situation to have to deal with, and one that we shouldn't have to deal with. The actives get frustrated and morale drops because they don't feel they're being supported. The alumni who are actively involved get frustrated by the lack of backing from other alumni, and then also get frustrated and worn out by trying to keep the active chapter in good spirits and not to lose heart.

So why does this happen? Each case has its own reasons, but there are a number of common ones. Most of them still have ways of being combated, though. One of the larger ones to overcome is taking a job and moving a great distance away from our chapters. But that person could still give their support on a monetary basis, and lend moral support. Probably the most common one is the person getting married shortly after graduation, greatly reducing

his flexibility and freedom. A couple weekends here and there should still be feasible, though. Some go to graduate school right away, leaving little time and extra money. But phone calls and emails to help with questions and give encouragement could still be done. In short, just like when we do recruiting, for almost every excuse, there is a solution.

The most noticeable area chapters seem to hurt the most of course is in their physical plant, which generally hinges on money. So many alumni always complain that they have no extra money to give back. But if you were to simply take \$5 per week and set it aside, that would be \$250 per year. Do some extra math and suddenly there's quite a lot of money flowing into the chapter – all for less than the price of one trip to McDonalds per week. Can you imagine what could be done? Chapter houses with resources to rival corporations, and in better condition than most sorority houses. We could provide partial or even full scholarships to every active. Now wouldn't that be a recruiting tool!

If we want Beta Sigma Psi to get beyond having more than 10-15 open chapters at a time, have the National staff to serve the undergraduates as fully and completely as they should be, and fully realize the vision our founders had over 75 years ago, we must work to fix our alumni involvement problem. While the undergraduates generally still shoulder most of the load to keep the chapters open, it's the alumni which provide the support and guidance to make them succeed over the long term. Over half of our currently closed chapters closed after 10 or less years of existence, before a strong alumni base could be formed to keep the chapters on track. To continue moving forward, the diploma effect needs to stop. Our alumni who have fallen away through the years need to be brought back in. If you want to be involved, but you don't have a chapter near you, contact the National Office and we'll find something for you. With everyone working together, we can make Beta Sigma Psi everything it was envisioned to be.

### **Calling All Pastors**

As I mentioned in my article in the last issue of the Gold Rose, one of my goals during my term as National President is to build an increased level of name recognition for Beta Sigma Psi among the Lutheran community, and of course pastors are a very important segment of that community. I would like to ask all of our pastoral alumni to do a few things to help us out in this endeavor.

First, I would ask that everyone who is a pastor (or retired pastor) to be sure the National Office knows that you are a pastor. The only way we know that you are is if you have "Rev." in the prefix column by your name in the database. If your mailing address on your Gold Rose does not have that prefix on it, please contact the office and ask it to be added.

Second, we would like to build a list of pastors (both alumni and otherwise) who allow us to use their name as part of a list of references when we do recruiting, approach congregations and church offices for lists of potential members, and other such activities. Having such a list will help to give us the "seal of approval" many hesitant parents and other pastors are looking for. Please let us know if you and/or someone else you know would be interested in being on this list. And if you do not want to be on the list, please still let us know that you are a pastor so we can at least say "We have X alumni who are pastors."

Third, be sure to tell your colleagues about us and the positive effect it had on your life. The fastest way to get other pastors to support us is by having already supportive pastors sell them on us. The National Board is working on developing a new National brochure which should be available in a couple months. We would be more than happy to supply them to you if you are willing to hand them out.

Fourth, please give us some insights as to how we can be more successful at building our name recognition and approval among pastors. It would be great if we could create a plan which would ensure that every new pastor knows who we are and holds us in high regard as he leaves the seminary. For now, we are not sure how to

**Continued Page 5**

# Housing Foundation Update

By John Hingst

One of the little-known support systems available to chapters and colonies is The Beta Sigma Psi Foundation; more often simply termed "the housing foundation".

The idea for such a foundation arose from a 1960 discussion between Larry Edwards and John Hingst about the lack of help for new colonies. These groups needed a few dollars to buy even the simplest equipment as they began setting up as a living unit. This was during the time when the Fraternity was expanding rapidly. The solution was increasing the pledging fee \$10 with the money set aside to fund the new lending unit.

While not a large source of funds, there were then many more pledges each year than we currently enjoy, and some money became available. Several loans were made. Most of the smaller loans were not repaid because of the rapid loss of new chapters during the turbulent 1968-1974 period of student protest. The loss of membership following this period resulted in a shortage of funds to operate National and soon the pledge fees were no longer remitted to the housing foundation. Pledge fees as a source of funds became history.

However some of the loans were used as the down payment on a chapter house. These were large enough to be secured with a second mortgage. Two of these chapters became inactive. The

housing foundation assumed the first mortgage and, to gain funds to repay the mortgage, leased the houses. This was done with the hope that the chapters would reorganize and again need housing.

After a period of five years hope of reorganization was largely lost, the houses were sold and the funds reinvested in loans to other chapters or in mutual funds. The growth in stock values over the past decade has resulted in a current net worth of \$247,000.

Currently there are no loans to chapters although one chapter is studying the advisability of requesting a loan to pay for a new furnace. If the request is made, the board of directors will hold a mail vote and, in all probability, the loan will be made within 10 days. Depending on the amount requested, a second mortgage might be required. Interest will depend to some extent on the time desired for repayment of the loan.

The housing foundation differs from the scholarship foundation in that it is not a 501-C-3 corporation. Gifts to the housing foundation are not tax deductible and it does not seek gifts. It is a business; as such, while eager to help chapters and colonies, it must also look for reasonable assurance that loans will be repaid. Loan requests directed to the National office will be sent to the foundation board for further action.

## Editor's Corner: The Value of Good Communication

This is the second issue of the *Gold Rose* in my term, and you might notice a few changes. The National Board approved the use of tear-out response cards in hopes of increasing feedback from active and alumni members. You will notice that one card is a change of address form including space for updates on important life events.

I hope that enough alumni will use these cards to **begin regularly printing updates from across the country and around the world**. Births, weddings, employment changes and many other life events are of interest to your brothers, but we seldom hear about them until long after the fact. And please don't wait – fill them out now. If you don't take the opportunity, there's no guarantee your fellow brothers will, either.

The other card has several topics listed based on questions alumni frequently ask the National Office. If you see an item of interest, just drop the card in the mail and we'll do our best to answer your questions.

**But good communications go far beyond *The Gold Rose* and an occasional alumni newsletter.** The National Fraternity offers an e-mail list that has more than 150 members on the roles. It would be great to see this number double or even triple.

I've heard many alumni comment on feeling "out of the loop" and this is the single best way to get back in the loop. The list usually gets a handful of messages each month. Occasionally, it also serves as a discussion vehicle for fraternity events and policies.

Some chapters also make use of an e-mail list. Simply contact the active chapter or your alumni chapter to find out if a list is available.

In any case, the fraternity can only benefit from have more alumni connected to chapters and actively taking an interest in helping us grow. the mission of Beta Sigma Psi is alive and well today, but we need your interest and support to continue the tradition. I hope you will prayerfully consider opportunities to take an active interest in the fraternity once more, whether it e through a Board position, in an alumni chapter or by helping with an active chapter or colony.

### Upcoming Editions

**The next issue of *Gold Rose* will be published in late Fall of 2001** reporting on the results of the National Council Meeting, news from chapters and updates from the National Board.

**If you are interested in submitting articles or information to *Gold Rose***, please contact Publications Editor Matt Kreps by e-mail at [publications@betasigmapi.org](mailto:publications@betasigmapi.org). *Gold Rose* thrives on your submissions.

The submissions deadline for the Fall issue is August 30, 2001. Please contact the publications editor in advance if you have material that will arrive near that date so we can save space for your article.

Many thanks to members who contributed to this edition.

**President's Corner**  
**Continued From Page 2**

accomplish this or how to build support among established pastors. We need your knowledge.

If we can build better knowledge and support among all of our pastors Beta Sigma Psi could grow exponentially.. Please give it some thought and some prayer, and pass along any insights you can.

**Expansion Sites Needed**

With the chartering of Zeta Delta Colony to Alpha-Alpha Chapter the week-end of May 5, we are back to having all of our groups as fully fledged chapters with no colonies. On that note, the National Board is looking for expansion and reactivation opportunities, as well as interested and dedicated alumni near those areas to spearhead the efforts.

There is particular interest in restarting Upsilon Chapter, as a younger brother of an Omega Chapter founder is a freshman at Illinois State and could serve as a catalyst in the effort. There are also a number of alumni from Upsilon and other chapters nearby, but a couple need to come forward to tackle the effort.

There has been talk among Delta alumni of restarting Delta, and the board is hoping they will find the right person to start the engine there. Initial inquiries have been received from interested students at a few other colleges around the country, but none have made further action after they were given our information about how to proceed.

Given the limited resources of the National Board and their locations, expansion efforts are dependent upon nearby alumni to make them work. If you live near a college which has serious potential of supporting a Beta Sig chapter and are interested in leading an effort to start one, or know of someone else who may be, please contact Craig Varner or the National Office to discuss the possibilities.

Kirk Meyer, A-663  
25th National President

# Alumni Chapter Interest Strong

*By James Shildmyer*

Interest continues to grow in metropolitan alumni chapters. This spring eight alumni and six wives gathered at Racines in Denver to see if there was interest in a Denver alumni chapter. With more than 120 alumni in Colorado, Denver is a prime location for a metropolitan chapter. Alumni from Alpha, Delta, Zeta and Eta attended the meeting and expressed interest in gathering throughout the year for social and service activities.

The group also discussed the need for early identification of potential associate member candidates going to universities with Beta Sig chapters. Much of this effort will involve educating local pastors about the fraternity.

Scott Gesell and Larry Edwards agreed to spearhead the organization effort. Perhaps in a few years the group will be able to organize a Beta Sig ski outing or another activity in the area.

On August 18 the Kansas City metropolitan chapter will host a picnic and softball tournament. Three teams are planned so far with players divided along chapter lines. More information will be available soon.

## Starting a Metro Group

Interest continues to grow in metropolitan alumni groups, and any group of alumni may choose to start a metropolitan chapter.

Metropolitan alumni chapters represent a unified interest based on the principles of Beta Sigma Psi. Often they get together for church events, community service and fun outings such as ski trips or golf matches.

The National Fraternity has a particular interest in developing metropolitan alumni clubs as they bring together alumni for events they would otherwise probably not participate in. Alumni located far from their college chapters often can not return to the campus for a homecoming meeting and interaction with their brothers. Metropolitan alumni chapters offer brothers from any chapter the opportunity to enjoy the bonds of brotherhood and remain connected to the fraternity.

If you have an interest in a metropolitan alumni chapter, please contact Jim Shildmyer for information.



**Can you identify this photograph?** Our search through the national archives yielded many unidentified photographs. If you know the chapter, names of individuals pictured or date, please send details to the Editor at [publications@betasigmapsi.org](mailto:publications@betasigmapsi.org).



# Alpha-Alpha Chartered

By Rod Thompson, Interim Executive Director

*Zeta Delta Colony at Midland Lutheran College became Alpha-Alpha chapter at a chartering ceremony held May 5, 2001 at Clemons Hall Chapel on the campus. Alpha-Alpha represents the fraternity's second chapter on a Lutheran college campus and the fraternity's first on a campus sponsored by the ELCA.*

*This is our fourth chartering celebration in just three years, which is a remarkable achievement. The chartering of Alpha-Alpha was possible due in large part to the work and diligence of Greg Gesell (Delta) who was selected to receive the Junker Georg Award, presented to the Beta Sigma Psi brother (either active or alumnus) most responsible for starting a new colony of Beta Sigma Psi. Assisting at the morning events prior to the chartering included Doug Hartmann (Delta), Greg Gesell (Delta), Dane Kohrs, President of Zeta Chapter, Tanner Ehmke (National Vice President), Kirk Meyer (National President) and myself.*

*I have recorded my remarks at each of these chartering events and I have tried to convey a message for each celebration. The Chi Chartering (in the Summer 1999 edition) was why a chapter succeeds or fails, and why our Lutheran faith and common background are important to Beta Sigma Psi. The Psi Chartering (in the Fall 1999 edition) focus was to explain the purpose of Beta Sigma Psi to our Lutheran clergy and why their support is so important to our fraternity. The Omega Chartering (in the Winter 2000 edition) tried to convey "what Beta Sigma Psi means to me" and to all of our alumni and collegiate members. The Alpha-Alpha Chartering speech was my opportunity to encourage expansion to more campuses.*

"Grace to you and peace from God our Father and the Lord Jesus Christ." This is Paul's greeting to the church in Ephesus from Ephesians Chapter 1 verse 2, and I felt it was appropriate as we greet the parents, family and friends today at the chartering event for Alpha-Alpha Chapter of Beta Sigma Psi on behalf of all alumni and members of Beta Sigma Psi past, present and future. May 5th will be a special day

for the founding members of Alpha-Alpha Chapter, all present and future brothers of Alpha-Alpha Chapter and their families and friends.

I say this because I had the opportunity to be present at Zeta Chapter's 50th Anniversary celebration earlier this year. It was a special day for all the members of Zeta Chapter and it was obvious how much pride was displayed over the weekend events and how strong the ties of friendship and brotherhood were. It was truly an inspirational event. We listened to Del Lienemann provide the keynote speech and were witness to why Beta Sigma Psi National Lutheran Fraternity was able to continue in over 75 years of existence. It was a special keynote address as Del Lienemann was also present at the Zeta Chapter Chartering event 50 years ago and signed their charter. Most of the founding members of Zeta Chapter were at the weekend celebration, and the joy they had is something the founding members of Alpha-Alpha will also experience some 50 years from now.

We are here today because we as members of Beta Sigma Psi Lutheran Fraternity "recognize that the life rooted with Christ in God is the only true goal of human existence." There have been many events that have challenged and threatened the contin-

ued existence of the fraternity. War and depression are the greatest threats, and we survived both of these calamities. What we have struggled with is our Lutheran identity and mission to our collegiate youth and to our churches. We have also had to persevere through financial difficulties. What we have not been able to overcome is apathy among our members and our members' inactive status.

There is a continual need to share what Beta Sigma Psi means to others so that we continue in our mission and carry on the vision of our founding fathers. We started as Pastor Stiegemeyer organized a group to facilitate ministry among Lutheran college students at the University of Illinois. Pastor Schmidt at Purdue heard about this group and helped begin Beta Chapter at Purdue. Reverend Erck heard about this movement and helped begin the chapter at the University of Nebraska - Lincoln. I read in the history of Alpha-Alpha that Pastor Jeff Nelson made the inquiries that brought Beta Sigma Psi to Midland University.

I would like to read from Luke Chapter 10 verses 1 and 2: "After this the Lord appointed seventy others, and sent them on ahead of Him, two by two, into every town and place where He was about to come. And He said to them, 'The harvest is plentiful, but the laborers are few; pray there-



Members of Alpha-Alpha Chapter at Midland Lutheran College stop for a photo opportunity celebrating their charter.

fore the Lord of the harvest to send out laborers into his harvest." We are again at the point in time of our history where we are on the brink of expansion once again. We have been blessed with chartering four chapters in only three years. These have been truly exciting times for our fraternity. I

challenge each of you here today to keep your ties strong to your chapter here at Midland University. Act as Christian gentlemen so that we can encourage other Lutheran pastors at other ELCA and LCMS campuses to invite Beta Sigma Psi Lutheran Fraternity to be a part of their

---

***Beta Sigma Psi has survived these 75 plus years because we remained true to our faith-based journey. God's fingerprints are all over the records in the archives. We will continue only if we always stress the balance of the three S's, the Spiritual, Scholastic and Social facets of our daily lives.***

---

impressed with the work our leaders have done in the past. I have read the correspondence, reviewed the old manuals and documents, and gazed at the pictures that have been prepared for us. As I have indicated before, Beta Sigma Psi Lutheran Fraternity has survived these 75 plus years because

campus ministry. When you graduate from college look around for opportunities to expand and start colonies elsewhere around the country.

I've had the opportunity to go through some of the records in our National archive collection. I've been

t h o r o u g h l y

we have remained true to our faith based journey. God's fingerprints are all over those records in the archives. We will continue on in the future only if we continue to stress the balance of the 3 S's, the Spiritual, Scholastic and Social facets of our daily lives.

We need to keep our existing chapters strong and continue to reach out to additional campuses where Lutheran pastors invite Beta Sigma Psi Lutheran Fraternity to become a vital part of their campus ministry. I would like to conclude with a reading from Second Peter Chapter 3 verses 17 and 18: "You therefore, beloved, knowing this beforehand, beware lest you be carried away with the error of lawless men and lose your own stability. But grow in the grace and knowledge of our Lord and Savior Jesus Christ. To Him be the glory now and to the day of eternity, Amen."

## ***Looking Forward, Looking Backward***

*By Greg Gesell, Delta*

Congratulations! Over the past two and one half years I have had the pleasure of working with a number of fine young men and those around them as they worked hard to found the latest chapter of Beta Sigma Psi. Some of the faces have changed, some have graduated, some have found other interests, but the spark has remained. I've had a lot of fun. It has been a time when we haven't always made the right moves but one where our common beliefs and purposes have help pull us together.

I had the privilege of going to school at a very large university in Lincoln, Nebraska and living in Delta's chapter house with my brothers. It was easy to form the bonds and comradery that naturally occurs when you live together, eat together, worship together, study together and socialize together as a group. Having watched these young men mature and grow I see where it has been more difficult for them to establish traditions and find that common ground.

You might think it would have been easier. After all, Midland College is a small campus in a small town. These young men were scattered across all the dormitories, they represent most of the academic majors and are involved in many different organizations on campus and off. Most of them work in some capacity to pay for the high private school tuition. Most of them have other interests and talents in music, drama, or other fields. They also didn't have the traditions to build upon. I think building brotherhood and friendships that will last a lifetime has been more difficult here than it was for me at the big school.

But that is what makes Beta Sigma Psi unique. Our Lutheran Christian traditions, background, and love for Christ make a common platform. Yes, Midland is a Lutheran campus. But especially here there is a place for a group of young men who recognize

that life rooted with Christ in God is the only true goal of human existence and who therefore foster, encourage and inspire activities and relationships which promote this end.

Progress has at times been hard and confusing. Many have helped along the way. In particular I would like to thank Craig Varner, past national president of Beta Sigma Psi who really got the spark started and kept the spirits up. Jason Cooper, who was a dormitory director, Tanner Emke, Zeta Chapter, and Matt Kreps, our past regional vice-president all pulled us at critical times and provided invaluable support. I want to particularly thank these individuals for their past and continued support. The cast of current advisors including Nic Engel, Carl Schaffner, Pastor Jim Melang, and Chip Borgstadt has been and remain very active along with another local Delta alumnus Doug Hartmann. They continue to guide and encourage these young men be it helping with fund raisers, attending meetings, offering advice, or just being there for one or more of the guys when called on. I would also like to recognize several local alumni attending today including Rupert Dunklau, Leroy Kramer, and Gerald Wolter who are here today. Without their support we wouldn't be here today celebrating Alpha-Alpha.

Let's keep in mind that today we are founding a new chapter. It isn't so much a celebration of the efforts or the past years, but rather a challenge and a kick-off for the coming years. This is a beginning that these young men forged. I want to thank them for letting me be involved. I have had fun and expect even more in the future. Now that these men have come this far I simply warn the rest in this room watch where they go from here. You haven't seen the best these young men can do yet!

Thanks and Congratulations!

# Zeta Celebrates 75 Years at Kansas State

By Norm Wilms, Zeta

Activity began Friday afternoon March 9, 2001 in the lobby of the Ramada Inn at 17th and Anderson in Manhattan, Kansas. The Anniversary committee was busy setting up the registration table and getting ready for guests. By 5 o'clock the alumni and in many cases with their wife and in some cases with their family, started to arrive. They would check in at the motel registration desk, pick up their celebration packet, put their suitcases in their room and return to the lobby area ready to greet some brothers that they have not seen for a long time. The motel lobby was busy with activity.

As 8:00 o'clock approached many of the alums headed for the house at 1200 Centennial drive to enjoy the hospitality activities provided by the Chapter. The men at Zeta had the house ready for inspection and were pleased to show the alums around the renovated premises which most had not seen. This function provided a great way for the men now living in the house to get acquainted with men that had gone before them.

Saturday morning many of the alums that stayed in the Ramada Inn had break-

fast in the restaurant. The registration desk was again manned and more alumni arrived throughout the morning. A great deal of activity took place in the motel lobby — the greetings, the hugs, the handshakes and the expression of joy by people that had not seen each other for many years. This was a very moving experience.



Del Lienemann, Sr.

During the morning some people took a tour of the campus and were amazed at the size and layout of the expanded library and surprised at all the changes that had taken place on the campus since they were a student. A few checked out the golf course at Colbert Hills.

Saturday noon the alums, wives, guests and actives gathered at the K-State Union Ballroom for lunch.

The Union has been added to and changed considerably in the last few years. After lunch the group moved to the auditorium. This became the time for reminiscing.

It was late in the afternoon and time to return to the Ramada Inn for the social hour and get ready for the banquet. The social hour was a great opportunity for people to mingle and check on the welfare

of many brothers and friends. It was also a good opportunity to visit with Kirk Meyer, National President, Rod Thompson, National Executive Director and Del Lienemann.

It was back to the K-State Union Ballroom for a banquet which began at 6:30. The Invocation was given by Rev. David Beese from the First Lutheran Church. After the meal the Master of Ceremonies, William "Bill" Martin, got the program underway. He introduced Kirk Meyer, National President, who brought greetings from National. Next Rod Thompson conducted a tribute to the Brothers that have passed away. He had the people in the room call out a name of a brother that was deceased. The room was very quiet as the names were called out. It was a fine reflection for those who have gone before us. It was a very touching experience.

Del Lienemann, Sr., National Secretary-Treasurer of Beta Sigma Psi 1945-1970, talked about some Beta Sig history especially when World War II came about and the membership was down to six men. His presentation was most interesting and was one of the highlights for the evening.

Mike Dove, President of the Manhattan Alumni Chapter, presented a "Certificate of Appreciation" to the twelve Charter Members that were present. The Charter Members that were not present were sent their certificate.

David D "Hort" Jackson was presented the "Lienemann Award" which is the highest award given by National Beta Sigma Psi. The award was presented to him by Del Lienemann, Sr., for whom the award is named. The award is given for outstanding contributions to the Fraternity, the University, government or mankind in general.

The banquet was attended by 98 alumni, 36 actives and 62 guests. The banquet concluded with the singing of Cross, Heart and Rose.

The anniversary celebration ended on Sunday morning at the Ramada Inn with a continental breakfast followed by a short service. Rev. Terry Boggs, from Ft Worth, Texas, provided an inspirational message for the occasion.



Charter members recognized at the 50th Anniversary celebration included (left to right): Delmar Hatesohl, Walter Lietz, Oscar Albrecht, Ken Gnadt, Jim Jorns, Ed Haver, Don Froehlich, Norm Wilms, El Dean Holthus, Howard Soeken and Wally Timm.



## Dave Jackson, Zeta, Awarded Lienemann at Celebration

The National Board of Directors is pleased to announce that David D. Jackson, Zeta Chapter '65, received the Lienemann Award, the fraternity's highest honor, at a presentation during the Zeta Chapter 50th Anniversary Celebration on March 10, 2001. Dave is the 17th recipient of the Lienemann Award in 75 years since Beta Sigma Psi National Lutheran Fraternity was founded in 1925.

Highlights of his career and accomplishments include the following:

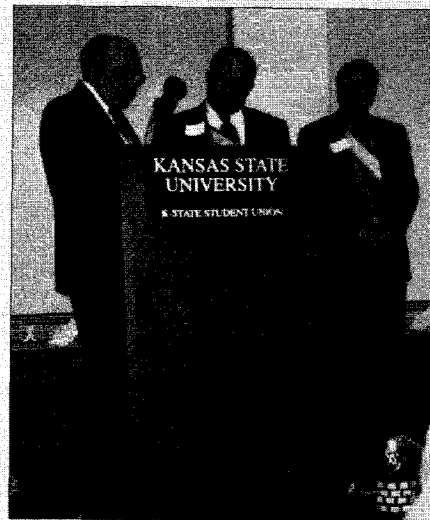
Dave served as National President from 1992 to 1994, National Regional Vice President from 1988 to 1992, and has been a member of the Beta Sigma Psi Educational Foundation Board of Directors since 1996. Dave served as the Manhattan Alumni Chapter President from 1971 to 1975, Rush Advisor from 1994 to present, Homecoming Tailgate Coordinator from 1995 to present, and fundraising committee member in 1995.

Dave pledged at Zeta Chapter in 1964 and served as Pledge Class Vice President. Honors in college included induction into Alpha Zeta (National Agriculture Honorary Fraternity), Gamma Sigma Delta (National Agriculture Honorary Fraternity), and Phi Mu Alpha (National Music Honorary). Dave graduated *cum laude* with a Bachelor of Science in Horticulture/Business from Kansas State University.

Dave has been a member of Calvary Lutheran Church since 1968. He is a lifelong resident of North Topeka, Kan. and was

elected Senator for the 18th District in the Kansas State Senate in November, 2000. Dave is President of Jackson's Greenhouse and Garden Center, Inc., North Topeka, Kansas. Dave and his wife, Annette, have two children who are married and each have two children. Dave's son, Chad, was a member of Zeta Chapter from 1991 to 1995 and served as President of Zeta Chapter in 1994.

Cards of congratulations can be sent to Dave at 1933 Lower Silver Lake Road, Topeka, KS 66608-1631.



Del Lienemann, Sr. (Left) presents Dave Jackson with his Lienemann sash. Award-winner Larry Edwards observes the proceedings.

## Zeta Through the Years Speakers

Ken Bender, Organizational beginning

Norm Wilms, Chartering

Jim Smith and Larry Edwards, The early years

Dale Meyer and Bill Martin, New house

Jerry Meng, Mike Dove and Phil Krug, The 1970's

Brian Smith and Tim Jorns, The 1980's

Ryan Ricker and Walt Dietz,

The 1990's and renovation of the house

Dirk Ricker and Matt Wolters, The 2000's

## 50th Anniversary Committee

Dr Larry Erickson, Chairman

Mike Dove

Ed Hauer

Don Kaiser

Dane Kohrs

Phil Krug

Bill Martin

Greg Meyers

Gary Raffety

Ryan Ricker

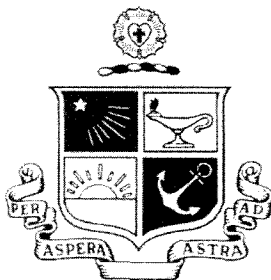
Mike Stohs

Norman Wilms

Mat Wolters



Rod Thompson, Interim National Executive director, Kirk Meyer, National President and Del Lienemann, Sr., talk during the festivities.



# Searching Through the Archives

*By Rod Thompson, Interim Executive Director*

You wouldn't believe it unless you see it for yourselves. And if you're in the O'Fallon, IL area, please call before you stop by. I've got a huge stack of boxes in the corner of my den that contains most of the National fraternity's archive collection. The task of sorting through all of these papers, documents and pictures started after Matt Kreps (Zeta) helped collect the collection of boxes stored at Dave Jackson's (Zeta) shed and Kirk Meyer (Alpha) helped collect the boxes stored in Bill Bunte's (Alpha) basement. We believe that with these two major storage areas the bulk of the archive collection is in one place once again. If any of you have some National archive records for any reason, please call me at 618-628-8806 and we can arrange to have them returned to the collection.

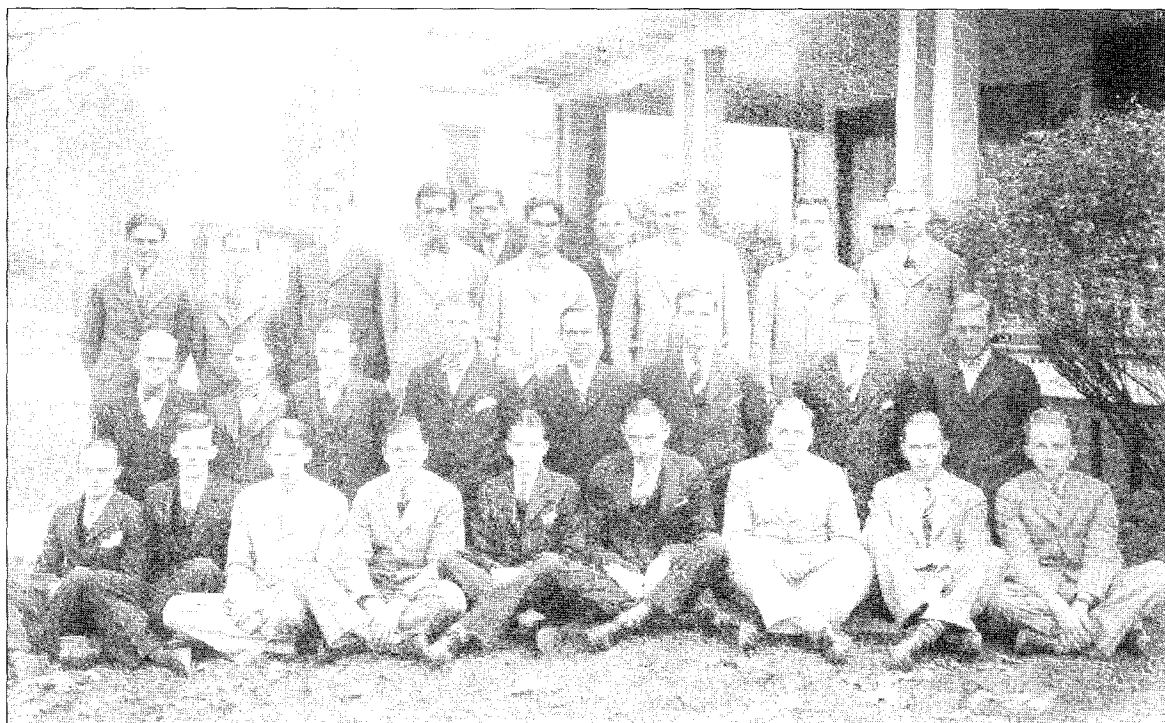
In addition to the "official" National archive collection, many private donors have stepped forward with their Beta Sigma Psi memorabilia. Ron Ehrhardt (Alpha) provided two large boxes of his personal Beta Sig items from the late 50's and early 60's. Those of you who attended the 75th Diamond Jubilee Anniversary celebration viewed many of Ron's materials that he generously contributed (dance cards, Beta Sig beanie hat, University of Illinois yearbooks circa 1925, etc.). I sent a letter to Lorenz Schmidt (Beta) asking him about his recollections of his father's work with the fraternity (Rev. Paul G. Schmidt, credited with organizing the Concordia Club at Purdue which later became Beta Chapter of Beta Sigma Psi). Lorenz did remember his dad's work and his note included "...During my days in St. James parsonage I remember Purdue students and some members of St. James visiting in Dad's study...concerning the beginnings of Concordia Club and then Beta Sig."

I spoke with Del Lienemann Sr. (Delta) during the 75th Diamond Jubilee Convention about the work with the National archives, and he generously donated his personal copy of the 3rd edition of the Pledge Manual and what I believe to be the very first National rush brochure. I am still hopeful that we will find an original volume of the Pledge Manual, but until then, Del's mint condition 3rd Edition is an incredible addition to the archives. Norm Wilms (Zeta) sent some materials associated with Zeta Chapter's history following their 50th Anniversary celebration earlier this year. We had some of the materials from the archives pertaining to Zeta Chapter's history on display at their 50th anniversary celebration earlier this year.

Each folder within each box contains a "find" and the work is truly page-by-page. There is a lot of chaff in the wheat, and the purpose of the first sort is to decide what is worth keeping and what can be discarded. Even receipts can have an interesting story if there is evidence of being associated with some fraternity event. One folder I thought had nothing, but when reading each page I found the folder included several interesting letters regarding the fraternity jewelry. One letter from 1963 was written by John Hingst to Del Lienemann recommending approval of Balfour's request to increase the price of a pearled badge by 10 percent, from \$19.00 plus tax to approximately \$21.00 plus tax and this was the first price increase since 1925. We also have correspondence between L. G. Balfour and Del Lienemann that included a "photostatic copy" of the original contract with Beta Sigma Psi signed on May 29, 1925 by A. E. Rauch, Nat. Pres. Temporary and Edgar J. Friedrich, National President. This was interesting as we list Edgar

Friedrich as the first National President. Perhaps someone will be able to send me some information as to A. E. Rauch's role with the National fraternity and if this contract provides enough evidence to modify our recorded history.

The pledge manuals have a history themselves. I found Thurman "Doc" Kaiser's (Beta) original typed draft of the changes he implemented for the 5th Edition when he was the National Publications Director. The overall commentary of the day was that the draft of the fraternity history was one of the best up to



The men of Alpha Chapter pictured in the Fall of 1927. At the time, the chapter house was located at 309 E. St. John Street. The photograph was discovered as part of the search through the National Archives.

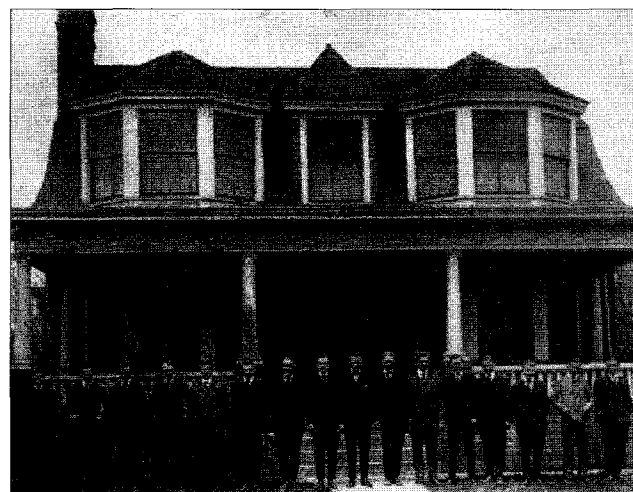
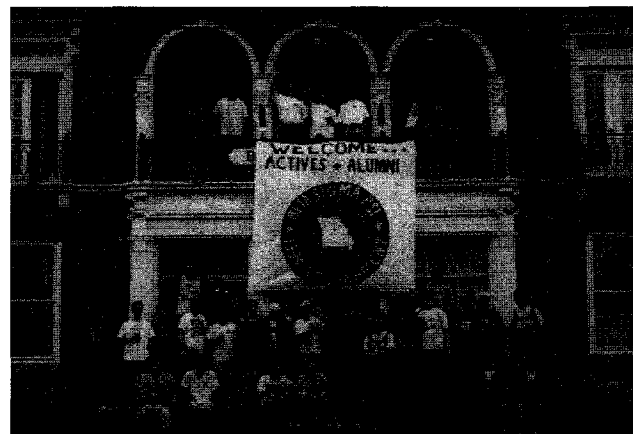
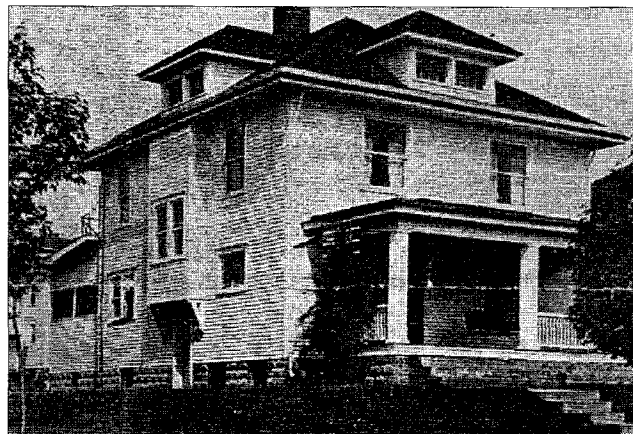
that time. The pledge manuals continued to change through the years and one modification Jon Riethmeier (Iota), who edits the current versions of the National Membership Manual, is considering includes a section on the "Fundamentals of Parliamentary Procedure" based on Del Lienemann's comments.

Another interesting "find" is the handwritten notes of the banquet address by Paul Seehausen at the 1962 convention. I believe that Del Lienemann asked for these notes just as I asked for Del's notes at the 75th Anniversary celebration. According to these notes, Paul was elected as the first President of the Concordia Club, which eventually became Beta Sigma Psi. This was a fascinating speech that has a lot of "early" history commentary.

There are so many letters and memorabilia in these boxes. What has impressed me is that Beta Sigma Psi National Lutheran Fraternity has continued to exist for over 75 years. The work of our founding fathers was carried on for many years by very dedicated people, inspired by a "life rooted with Christ in God is the only true goal of human existence and who therefore foster, encourage and inspire activities and relationships which promote this end." Our history is tightly interwoven with a common bond with the Lutheran churches and a common understanding of our faith. God's fingerprints in our endeavors are obvious when you start searching through the records. We have defended the Lutheran clause successfully in court and on the campuses, and there are box loads of documentation to support that position. We have continued as a fraternity for these many years because of our common bonds with the Lutheran churches and will continue in the future only if we continue with the vision of our founding fathers.

If anyone has materials they want to donate to the National archives, please call me at 618-628-8806 or write to me at 753 Deer Creek Road, O'Fallon, IL 62269. We are especially interested in Gold Roses prior to 1951 and any materials prior to 1950, to include any Concordia memorabilia. When I spoke with Ms. Del (Naomi) Karneier at Zeta Chapter's 50th Anniversary celebration, she indicated that Del (Alpha) had about three or more boxes in the basement she would gladly donate to the fraternity and that she would have them ready to go in 2002 at the National Convention in Kansas City. The materials donated from everyone will be incorporated into the sorting and sifting process and the goal is to eventually prepare a written history of the fraternity. Your generosity will mean a great deal to the Beta Sigs who follow in our footsteps. God Bless Beta Sigma Psi National Lutheran Fraternity!

**From top:** The Concordia Club house purchased in Lafayette, Ind. In 1994 Iota Chapter hosted the National Basketball Tournament. John Hingst presented an award to an unknown active member. Can you identify this photograph? The Alpha Chapter House 1929-30. The house was rented while 52 E. Armory was under construction. The men in the picture are from a local fraternity  $\Psi\Delta$ , who owned the house.



## Beta Alumni Receive Honorary PhDs

Of 15 Honorary Ph D.'s granted this spring by Purdue University, two were given to Beta alumni. Donald W. Feddersen, B.S.M.E. '56 Wellesley, MA and Donald R. Scifres, B.S.E.E., '68 Palo Alto, CA were recognized for their accomplishments. Both have been ardent supporters of Beta Chapter and the National fraternity. Congratulations to these brothers for their recent recognition!

— John Hingst

## Kansas City Metropolitan Chapter Going Strong

On March 9, fifteen Beta Sig brothers, representing three different chapters, met at the Minsky's Pizza in downtown Kansas City to enjoy the Big XII basketball tournament.

"This is something that we are hoping will continue to be an annual event here in KC," said Brent Toellner (Iota, '92). "We had a larger turnout than a year ago, and I hope it continues to grow – even after the tournament itself leaves KC. We have such a strong alumni base from Big XII schools in the area, it would be a shame not to take advantage of the opportunity."

Beta Sigs from around the Metro area joined the group – and even fellow alumni from St. Louis and Tallahassee, FL joined

in the fun.

"We had a tough break with the tournament being the same weekend as the big festivities at Zeta the same weekend," said Toellner. "I think everyone had a good time even though no one's team won."

## St. Louis Area Golf Tourney June 23; Kansas City June 30

Again, this year's golf tournament will be at Clinton Hills Golf Course in Belleville, IL. Beta Sigs from all chapters are invited to join in the festivities. The tournament is scheduled for Saturday June 23 at 11 am. The cost is \$39 dollars if we have up to 50 and \$35 for 50 or more. More details will come out in a mailing prior to the event.

This event is open to hackers and low handicappers alike. It's all for the fun of it. After the tournament, dinner (usually finger licking barbeque) will be served at the course.

If you have any questions, please call Denny Mall at 314-892-3670.

The Kansas City area alumni will be having its first ever annual golf tournament at Paradise Point (in Smithville, about 20 minutes North of downtown KC). The tournament will begin at 10:00 am on the Outlaw Golf Course and will be a fundraising event.

"This is our first attempt at having a golf outing for the alumni from all the

chapters in the Kansas City area," said tournament organizer Brent Toellner (Iota '92). "We hoping to have a pretty good turnout for year one and build from there."

More details will follow in an upcoming mailing, however the time and place are set. Proceeds from the tournament fundraiser will be donated by Beta Sigma Psi's Kansas City area alumni group to Kansas City Lutheran High School. "It's a natural tie in for Beta Sig. We really should be doing more, as an alumni organization, to help out other Lutheran organizations in the area," said Toellner.

If you have questions about the event, please contact Brent Toellner a 913-248-8225 or email him at [btoellner@mindspring.com](mailto:btoellner@mindspring.com).

### The Center

What is the shortest chapter in the Bible?

Answer - Psalms 117

What is the longest chapter in the Bible?

Answer - Psalms 119

Which chapter is in the center of the Bible

Answer - Psalms 118

Fact: There are 594 chapters before Psalms 118

Fact: There are 594 chapters after Psalms 118

Add these numbers up and you get 1188

What is the center verse in the Bible?

Answer - Psalms 118:8 (NKJV) "It is better to trust in the LORD than to put confidence in man."

Does this verse say something significant about God's perfect will for our lives? The next time someone says they would like to find God's perfect will for their lives and that they want to be in the center of His will just send them to the center of His Word!

Now isn't that odd how this worked out or was God in the center of it?



Norm Wilms (Zeta) presented Paul Mellring (Zeta) with an Alumni volunteer Service Award at Paul's parents home on Topeka, Kan., in March, 2001.



## In Memorium

**Steven Edward Rassbach**, 33, of 5000 Fernhill Drive in South St. Louis County was called to the Church Triumphant from St. Anthony's Hospital on March 17, following several years of extensive treatment and medical trials in Boston, MA and Houston, TX.

He was a founding partner of Wiegmann & Associates of St. Charles, MO, heating and cooling engineers serving national companies and municipalities. He was a member of Beta Sigma Psi, the National Lutheran Fraternity.

Born in Parsons, KS, on January 19, 1968, he attended public school in Le Mars, IA through the second grade and then entered Green Park Lutheran School in Lemay, MO and Lutheran High School South in Affton, MO, before graduating from the University of Missouri at Rolla with a degree in electrical engineering management.

No open casket or visitation are planned. A meditation will begin at Kutis Funeral Home, 10151 Gravois Road, on Friday, March 23 at noon led by the Rev. Paul Hasselbring of New Life Lutheran Church in Pembroke Pines, FL. He had been a classmate at Rolla. Gregg Mueller of Christ Memorial Lutheran Church, Affton, MO, will be the organist.

Pallbearers will be Kevin Bartz, David Bosslet, Timothy Breece, Carl Hasselbring, Michael Mitchell and Mark Mueller.

Burial will be in Concordia Cemetery, 4209 Bates in South St. Louis. After the interment, everyone is invited to a meal at Christ Memorial Lutheran Church, at the corner of Tesson Ferry and Reavis.

Baptized at Trinity Lutheran Church, Parsons, KS on January 28, 1968 and confirmed at Christ Memorial Lutheran Church in Affton, MO on April 4, 1982, Rassbach is survived by his parents, Rev. Jim and Sharon Rassbach, a brother and his wife, Timothy and Susan (Jones) Rassbach of Columbia, MO, a grandmother in Eau Claire, WI, Mrs. Margaret C. Rassbach, and numerous uncles, aunts and cousins.

In lieu of flowers, the family seeks to fund studies on lipo sarcoma, a rare disease that has received little research attention; Bank of America Account 003474904917. The family also supports the services of the Beta Sigma Psi Educational Foundation that benefits Lutheran college men.

The family thanks God for His mercy, and the numerous co-workers, engineers, friends, nurses, medical doctors and personnel, pastors and teachers for many kindnesses, ongoing prayers, skillful support and visits.

— Tim Rassbach

**John Krehbiel** died on July 17, 2000 after living with A.L.S. for five years. He retired from the Air Force in 1995 after more than 22 years as a pilot flying B-52s and T-37s. He owned and operated an amusement business until his death.

**William C. Weber**, 84, of Bellville, Ill., died on April 23, 1999. Weber was Principal and Superintendent of the Signal Hill School District for 22 years until his retirement in 1980. Weber was a member of Zion Lutheran Church in Belleville. He graduated from the University of Illinois in 1938.

**Eric Wickert** of Eureka, MO, died December 26, 2000. He is survived by his wife Kathy and son Eric Jr.

**Rudy Hilst**, honorary member and long-time faculty advisor for Beta Chapter, died in 1999.

**Harry Buddenbaum**, 1962 graduate and member of Beta Chapter died in 2000.

**Stephen J. Karst** of Zeta Chapter died of cancer January 13, 1996.

**Alvin C. Steinbac** of Rolla, MO, died October 30, 2000.

**Larry Osburn**, Lambda Chapter, died last November at age 51.

**William Herberg**, 72, of St. Peter Iowa, died March 20, 2000. Herberg was a charter member of Zeta Chapter. Herberg graduated from Kansas State University in 1954 with a degree in veterinary medicine after serving in the United States Navy.

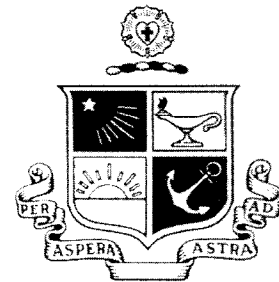
**Gilbert Otto Katzenmeier**, 76, of Wichita, KS, died March 13, 1998. Katzenmeier was a charter member of Zeta Chapter. Katzenmeier was a veteran of World War II and retired mechanical engineer from Boeing.

Deceased members, dates unknown:

**Gilbert Katzenmier** of Wichita, KS.

**Virgil Walter** of Lincoln, KS.

**William Herberg** of Minnesota.



## 2001 LA: Aug 10 - 12

*Beta Sigma Psi stands out among fraternities for its focus on member development. The leadership Academies are one vehicle for this important investment in our members. This year's Academy will feature Leadership programming mixed with opportunities for active and alumni members to meet their brothers from other chapters. Come join the fun!*

This year's Leadership Academy will take place Aug. 10 - 12 in St. Louis. Contact the National Office at 618-235-0014 or [Office@betasigmapsi.org](mailto:Office@betasigmapsi.org) for additional details.

Friday will offer time for Board meetings for the National Board of Directors, Educational Foundation and Beta Sigma Psi Foundation as well as registration and classes in the afternoon.

Friday evening the membership will take time to catch the Gateway Grizzlies baseball team in action and catch up on news from other chapters.

Classes continue Saturday morning followed by the National Council Saturday afternoon to conduct business for the 2001 - 2002 school year.

Saturday evening will feature the annual awards banquet recognizing chapters and individuals for their accomplishments. As is traditional for beta Sig events, bowling will cap the evening.

Sunday morning will feature a Beta Sig devotional service and an opportunity to conclude any National Council or Board business as needed. Plans are to complete proceedings no later than noon.



# The Myths and Facts of Hazing

*Beta Sigma Psi joins many other fraternities with its strong policy against hazing. Continued education and awareness at the National, Active and Alumni levels act as strong safeguards and equip members to stand up against acts of hazing in their Greek systems.*

Hazing. The term is often used on college campuses in association with Greek-letter organizations. It often conjures up images of drinking, paddling, kidnapping and servitude in the process of pledging one's commitment to the brother/sisterhood. Some say that hazing is simply harmless pranks and a tradition that is "all in good fun." Others admit that hazing can be humiliating and even dangerous, but contend that it is the best way to build loyalty to the group. However, many are surprised to learn that hazing can be deadly.

Studies have shown that hazing is prevalent in student organizations at the high school and collegiate level and that hazing has been responsible for the death of at least one student every year since 1970.

There are many ideas about what constitutes hazing, its purpose, rightful place (if any), and effects—clearly there are many misconceptions. Clear-cut answers to many of these questions are difficult to find. Many victims and perpetrators of hazing say they made poor judgments in part because they were not well informed about hazing. Knowledge is a form of power; the more knowledge people have about hazing, the more empowered they will be to make good choices.

The following are common myths and facts about hazing.

**Myth 1:** Hazing primarily occurs in fraternities and sororities.

**Fact:** Hazing is endemic to our society. Hazing incidents have been reported in middle schools, high schools, athletic teams, bands, professional sports teams, the military, religious cults and other clubs and organizations. In fact, a survey conducted by Alfred University and the NCAA reports that 80 percent of college athletes have experienced hazing. Many

students have already been inculcated into a culture of hazing long before joining any of these groups. Hazing has become so pervasive that it is often ignored or accepted. Many hazing "traditions" have occurred for years in organizations, often with the tacit approval of coaches, teachers and advisors. Since hazing activities are often misperceived as normal behavior, it makes it all the more difficult for initiates to refuse to participate in potentially dangerous and humiliating activities.

**Myth 2:** It is difficult to determine what is considered hazing.

**Respect can only be earned, not taught. Victims of hazing rarely report feeling respect for those who hazed them. In fact, hazing often has the reverse effect.**

purpose of initiation or continued membership in an organization. While there are many actions that can be considered hazing, hazing can be both overt and covert. Covert or subtle hazing often involves activities that are designed to ridicule, humiliate or demean the prospective member. This includes requiring prospective or new members to perform duties not required of the other members such as carrying equipment, shining shoes, cleaning duties and forced periods of silence. These subtle forms of hazing, while sometimes not particularly harmful or hazardous to the prospective/new members, often set the stage for more dangerous activities. More obvious forms of hazing include activities that cause extreme mental anguish or physical discomfort to the prospective members. Examples include verbal abuse, forced sleep deprivation, ingesting alcohol or noxious substances, and kidnapping and locking initiates in enclosed spaces.

**Myth 3:** Hazing is just foolish pranks that are rarely dangerous.

**Fact:** Hazing is not about foolish pranks. At its core, hazing is about power and control over others. It is premeditated victimization. Even if there is no malicious intent, the imbalance of power between members and non-members creates the potential for abuse to occur. Many deaths have been caused by events that many

members initially considered "harmless" initiations.

**Myth 4:** Hazing is a tradition.

**Fact:** No fraternities, sororities, athletic teams or other student organizations were founded on a tradition of hazing. If the founding members didn't haze then why should current members? These so-called hazing traditions need to be exposed and the founding ideals of the organization reclaimed.

**Myth 5:** Members must haze new members to teach them respect for the organization.

**Fact:** Respect can only be earned, not taught. Victims of hazing rarely report feeling respect for those who hazed them. In fact, hazing often has the reverse effect. Taking a stand against hazing in the organization will eventually earn a person more respect than going along with the crowd.

**Myth 6:** Prospective members can always say no to hazing.

**Fact:** The intense peer pressure involved in hazing, coupled with the prospective members' desire to belong to the group, make it very difficult to say no to hazing. In fact, many state laws recognize this dynamic and specifically provide that consent of the victim can not be used as a defense against a hazing charge. In other words, even if a prospective member appears to willingly submit to hazing, the perpetrators can still be charged with a crime.

It's up to you!

The first step toward eradicating hazing is to educate others about the realities of hazing. Until more students recognize the harmful effects of hazing, many students' lives will remain at risk. We hope that this article is a small step in this endeavor, and we urge each of you to continue this effort by talking with others about hazing and taking a stand when you witness or have knowledge of hazing activities.

*Adapted and reprinted from the October 1999 issue of Peer Educator. Authors: Brian Rahill and Elizabeth Allan, content supplied by the [www.StopHazing.org](http://www.StopHazing.org) Web site.*



## Alumni Chapters

### Rolla (Eta)

Jonathan Schmidt  
430 Oak Tree Drive  
Webster Groves, MO 63119  
314/968-9729

### Columbia (Iota)

Jim Gwinner  
12948B Bryce Canyon  
Maryland Heights, MO 63043  
314/275-7742

## Kansas City Area

Mike Unger  
8304 Hillcrest #2  
Kansas City, MO 64132  
816/333-7439

### Ames (Epsilon)

Mark Anderson  
8171 Elm Drive  
Morrison, IL 61270-9003  
815/ 772-7105

### Manhattan (Zeta)

Clyde Ricker  
565 Avenue N  
Raymond, KS 67573  
316/938-2545

Chad N Pfister  
C/O Jerry and Debbie Pfister  
1196 SE 125  
Knob Noster, MO 65336-2153