

# Martys' Boys

## Inside this issue:

What is Martys' Boys	2
Beta Sigma Psi Football League	2
Kansas City, Kansas City Here we Come	2
Thrivent to Continue Relationship	3
Fire Inspection Resolution Passes	3
Regional Vice Presidents Assigned	5
2004–2006 National Board of Directors	6

## Special points of interest:

- October 9—National Board of Directors Conference Call
- October 15—Overnight Guest Policy due to National
- October 31—Nebraska Colonization Ceremony
- November 13—National Board Face to Face Meeting

## Beta to host 2005 Membership Education Forum

The National Board of Directors at their September Conference Call awarded the 2005 Membership Education Forum/National Basketball Tournament to Beta Chapter at Purdue University.

The 2005 MEF/NBT will take place from February 11th - 13th. A final schedule of events has not yet been determined.

The weekend will feature a fellowship at the Beta Chapter house in Friday night. Saturday will see the Membership Education Forum take place at University Lutheran.

The format of the MEF will be quite different than past years. While final plans

have not been determined, the Forum will hopefully feature a Leadership Presentation from Thrivent Financial for Lutherans, much more small group discussion, and a recruitment seminar for current and future Rush Chairmen.

The 26th National Basketball Tournament will be held Saturday afternoon and night at Lambert Fieldhouse on the campus of Purdue University.

The weekend will conclude on Sunday morning with church at University Lutheran.



Beta Chapter House

The 2005 edition of the Membership Education Forum and National Basketball Tournament will be an event that you do not want to miss.

Keep reading the Marty's Boys in the next couple of months to find out more details about the 2005 Membership Education Forum and National Basketball Tournament.

## I'm Back

Yes brothers Marty's Boys has returned to the men of Beta Sigma Psi. You might be wondering where I have been for the past couple of years.

I'm here to tell you that I've

been working on my tan in the Caribbean. I felt it was time to get out of the sun and into the snow of the Midwest.

While I've missed a lot of great changes over the

past few years, I can tell you I don't plan on missing any more exciting local and National events.

Keep reading me to find out what is going on in the world of Beta Sigma Psi.

## What is Martys' Boys?

Martys' Boys was created in the late 1990s by then National President Craig Varner as a means of improving communication between the National Fraternity/Board of Directors and the Active Chapters.

While Martys' Boys will continue to follow its original purposes, it will slowly begin expanding its coverage to include Alumni events and happenings at other National Fraternities.

Over the next few issues Martys' Boys

will be introducing you to the new National Board of Directors, as well as Active Chapter happenings. Each issue will focus on the history and happenings at one chapter. This will give you an opportunity to learn the history of fellow chapters. While all of us know the beginnings of Alpha and Beta chapters, how many know how it got



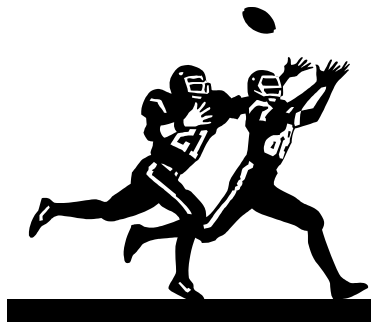
started at Epsilon or Eta. By the end of this year you will know.

The biggest change is that Martys' Boy will be the first attempt by the National Fraternity to have a complete electronic newsletter. Martys' Boys will be distributed to all members who have registered their e-mail address with the National Fraternity.

## Beta Sigma Psi Football League

Throughout this school year Marty's Boys will be conducting a competition to determine which Beta Sigma Psi Host Institution will be crowned Football Champion and Basketball Champion. The standings will be determined by overall record, with ties being broken by point differential. Throughout this Football season many of our host institutions will be competing against each other on the gridiron. The first of these match-ups occurs

September 25th when Purdue travels to Illinois



Team	W	L	PF	PA
Purdue	2	0	110	7
Missouri	2	1	114	44
Nebraska	2	1	97	55
Illinois	2	1	99	75
Iowa St	2	1	81	58
Midland	2	1	68	50
Kansas St	2	1	88	78
UMR	1	3	78	171

## Kansas City, Kansas City Here We Come

The active members have spoken and said that they want to go back to Kansas City for the 2005 Leadership Academy.

There was a close battle between Indianapolis,



Louisville, and Kansas City. But in the end it was Kansas City that fought to the top of the heap.

Dates, location, and fraternal partners for the Leadership Academy have not been set yet, but keep

looking to the Martys' Boys for more information.

If you are interested in helping out in the planning of the 2005 Leadership Academy please contact Chad Pfister at [chad.pfister@verizon.net](mailto:chad.pfister@verizon.net)

## Thrivent to Continue Relationship with Beta Sigma Psi

As many of you may be aware the 2004 National Convention received over \$4,000 in support from Thrivent Financial for Lutherans in the form of supplies, manpower, and money.

For many years, Beta Sigma Psi has been working diligently to foster a relationship with Thrivent and its predecessors AAL and Lutheran Brotherhood. It is a great sign that we will be receiving additional support over the



Thrivent Financial for Lutherans

Financial Planning presentations, Recruitment presentations, and help with

coming years from Thrivent.

In the coming weeks, our chapters will be contacted by Thrivent Representatives in their area to find out ways in which they can help the chapter. These services will likely include

local service projects.

This is a great relationship that has begun to foster between Beta Sigma Psi and Thrivent. It is my hope that this is only the beginning of what we can achieve with Thrivent. If you have any other questions concerning our relationship with Thrivent please feel free to contact me at betasigpresident@verizon.net

Chad Pfister  
27th National President

## Fire Inspection Resolution Passes

During their September Conference Call the National Board of Directors passed a Fire Inspection Resolution in wake of the Alpha Tau Omega fire at the University of Mississippi.

The resolution requires chapters to file with the National Senior Vice President the results of any and all inspections completed by the respective fire department and/or insurance company from November 1, 2003 and November 1, 2004.

Failure to submit the results of these inspections by November 12, 2004 will result in both the Active and Alumni Chapters being fined \$250.

This filing requirement will be subsequently placed into the National Risk Management Policy by Senior Vice President, Ben Bahr.

Any questions concerning this policy should be directed towards Ben Bahr at ben@sonriseministries.com.

"It's important that the National Fraternity be aware of the state of our chapter houses to best address potential problems." - National Senior Vice President Ben Bahr

## Regional Vice Presidents Assigned

After agonizing weeks the Regional Vice Presidents have finally been assigned their chapters for the 2004—2005 School year.

Craig Marbach (Beta) will serve as Eastern Regional Vice President, working directly with Alpha, Beta, and Psi Chapters.

The Northern Regional Vice President is Rudy Ristich from Beta. Rudy will be working with Epsilon, Alpha-Alpha, and Delta Colony.

The final Regional Vice President position will be filled by Adam Synground from Zeta. Adam



will be serving as Southern Regional Vice President and be working with Zeta, Eta, and Iota Chapters.

Look for these great guys to be visiting your chapter in the coming months.

## Beta Sigma Psi

c/o Southern Illinois District—LCMS  
2408 Lebanon Ave  
Belleville, IL 62221

Phone: 618.235.0014  
Fax: 618.235.0051  
Email: [office@betasigmapi.org](mailto:office@betasigmapi.org)

**Per Aspera Ad Astra**



We're on the web  
[www.betasigmapi.org](http://www.betasigmapi.org)

The purpose of Beta Sigma Psi is to promote an environment in which the Lutheran college man can grow spiritually, scholastically, and socially. To that end, Beta Sigma Psi undertakes programs designed to develop Christian leaders and to aid individuals in assuming a satisfying and useful role in society. Through its alumni and undergraduate leadership, Beta Sigma Psi endeavors to assist each member:

1. Develop character
2. Develop intellectual awareness
3. Develop social responsibility to Chapter, College, Community, State, Nation, and World
4. Develop spiritual welfare
5. Develop brotherhood
6. Develop integrity
7. Promote friendship
8. Advance Justice

## 2004—2006 National Board of Directors

### National President

Chad Pfister  
1060 Golfview Blvd. Apt. H  
Valparaiso, IN 46385  
219.462.0089  
219.242.1856  
[Chad.pfister@verizon.net](mailto:Chad.pfister@verizon.net)

### Immediate Past President

Chad Winterhoff  
1320 Wenig Rd NE Apt. 3  
Cedar Rapids, IA 52402  
319.270.2233  
[cwinterhof@hotmail.com](mailto:cwinterhof@hotmail.com)

### Senior Vice President

Ben Bahr  
Concordia Seminary Box 9  
801 DeMun Avenue  
St. Louis, MO 63105  
314.505.7413  
[ben@sonriseministries.com](mailto:ben@sonriseministries.com)

### Eastern Region Vice President (A, B, Ψ)

Craig Marbach  
2662 Morning Glory  
Rolling Prairie, IN 46371  
219.575.1578  
[cmarbach@howmet.com](mailto:cmarbach@howmet.com)

### Northern Region Vice President

(Δ, E, A-A)  
Rudy Ristich  
1437 President St.  
Glendale Heights, IL 60139  
630.665.8250  
[rudyristich@hotmail.com](mailto:rudyristich@hotmail.com)

### Southern Region Vice President (Z, H, I)

Adam Synoground  
6442 NW 49th Street  
Kansas City, MO 64151  
800.255.6837 x1371  
[adamdog69@hotmail.com](mailto:adamdog69@hotmail.com)

### Alumni Affairs Vice President

Andy Ortstadt  
639 Bonita Ave.  
Webster Groves, MO 63119  
314.962.0582  
[aortstadt@sbcglobal.net](mailto:aortstadt@sbcglobal.net)

### Treasurer

Art Giesler  
2308 Woodmoor Lane  
Colleyville, TX 76034  
817.421.5871  
[gieslerbsp@aol.com](mailto:gieslerbsp@aol.com)

### Recruitment Director

Cliff Ascher  
123 White Pine Ave.  
O'Fallon, IL 62269  
618.632.8934  
[cdascher@sbcglobal.net](mailto:cdascher@sbcglobal.net)

### Publications Director

Tanner Ehmke  
510 W. Belmont Ave. Apt. 1501  
Chicago, IL 60657  
773.525.3184  
[tcehmke@yahoo.com](mailto:tcehmke@yahoo.com)

### Membership Ed/Scholarship Director

Travis Yee  
801 DeMun Ave.  
St. Louis, MO 63105  
917.559.0292  
[ninjawing@yahoo.com](mailto:ninjawing@yahoo.com)

### Lutheran Relations Director

Dan Ross  
7105 Virginia Road, Suite 6A3  
Crystal Lake, IL 60014  
815.455.1203  
[dan.ross@thrivent.com](mailto:dan.ross@thrivent.com)

### Executive Director (Interim)

Matt Wolters  
R.R. 2 Box 162  
Atwood, KS 67730  
785.626.4655  
[mattwolters@starband.net](mailto:mattwolters@starband.net)

### Pastoral Advisor (LCMS)

Mark Heilman  
2010 Stevenson Drive  
Ames, IA 50010  
515.232.4595  
[mkheilman@aol.com](mailto:mkheilman@aol.com)