

Marty's Boys

Inside this issue:

Eta Pastoral Advisor Helps Afghan Children	2
Alpha Guys Become Illini Super Fans	3
Paperwork Submission	3
Beta Enjoying Balanced Life of 3 S's	4
Award Submissions a Year Long Process	4
Calendar of Events	5
Beta Sigma Psi Football League	5

Special points of interest:

- October 15—Overnight Guest Policy due to National
- October 16 & 17—Small Fraternity Caucus Meeting
- October 31—Nebraska Colonization Ceremony
- November 13—National Board Face to Face Meeting

MEF Format to be a Little Bit of This and That

During its October Conference Call, the National Board of Directors decided on the preliminary format of the 2005 Membership Education Forum to be held at Beta Chapter on February 11—13.

The MEF will start at 9:00 am EST at University Lutheran Church in West Lafayette, IN and conclude at 3:00 pm EST.

The year's large group presentation will be entitled "How To Sell" - techniques on how to sell products and yourself in the 21st century. The remainder of the MEF will be divided up into small group discussions ranging from a variety of different topics.

Some of this topics include:

- New Member Orientation
- Recruitment Seminar
- Presidents' Meeting
- Membership Education Manual
- Treasurer Meeting
- Leadership Academy
- Office Roundtables
- National Programming

In addition to this topics, the National Fraternity is sponsoring a seminar for Alumni Chapter Officers which will focus on ways to build better communication among our members,



Beta Sigs at 2001 MEF in Columbia, MO

and way to improve Alumni Chapter Operations. This seminar will be led by Alumni Relations Vice President, Andy Ortstadt.

More information concerning housing arrangements, National Basketball Tournament, and other activities throughout the weekend will be forthcoming in the coming weeks.

Texas A&M Interest Group Formed

It is with extreme pleasure to announce that an interest group has formed at Texas A&M University in College Station, Texas. The creation of this group can be credited to Pastor Paul Hoemann (Iota) who is the pastor at University Lu-

theran Church in College Station.

This is not the first time that Beta Sigma Psi has been to A&M. Phi Chapter was active on campus from 1988—1994.

In the coming months the

group will be working to get recognition from the University and Board of Directors. If you or someone you know would be interested in helping this group please contact Chad Pfister.

Eta Pastoral Advisor helps Afghan Children

By Justin Gest
St. Louis Post Dispatch
September 20, 2004

WASHINGTON - They were sneakers that she used to wear to gym class.

Blue and yellow, Nike mesh running shoes that were still in pretty good shape. They just got replaced by a newer style.

But while they were only another pair of shoes among many inside 17-year-old Kelly Dunn's closet in Rolla, Mo., they will soon be an exotic luxury, cushioning the feet of a young woman going to school in the barren outskirts of Kabul, Afghanistan.

Through a grass-roots effort by several Missouri reservists based in Bagram, Afghanistan, the military is not only offering 3,500 school-age Afghan boys and girls a pair of shoes, but also a backpack, a notebook, some pencils and erasers, and a stuffed animal too.

In a drive coordinated by Capt. Richard Krenning, a chaplain from Rolla, and Sgt. Bradley Fink of Kansas City, Kan., the 325th Army Field Hospital based in Independence, Mo., is collecting everything from Keds to crayons.

Linda Travers, the 325th's family readiness leader, said that the idea came from the soldiers in Afghanistan.

"I asked the soldiers as a group what they wanted that we could send them, and they asked for some spaghetti sauce and some

other stuff," Travers said. "But they really wanted some school supplies for the kids. We put an ad out in the local paper, and now we receive the items and ship them off every two months."

And soldiers say that reactions among the Afghan teenagers receiving a pre-owned bookbag have resembled that of a Missouri teenager receiving a pre-owned Mercedes.

"There were these two girls at the local school," recalled Sgt. Fink by phone. "They were clutching their notebooks tightly, and it was just so clear how happy and grateful they were to have a simple spiral notebook and a pencil with an eraser.

"A notebook and a pencil," he repeated.

The notebook and pencil were most likely given by residents from Independence, just two items in 15 huge boxes of stuffed animals and school supplies, Krenning said. He estimates that the 325th recently received 1,500 spiral notebooks from Rolla, and 800 pairs of shoes from Montefiore Hospital in the Bronx, N.Y.

"And this is just a drop in the bucket," said Krenning, a doctor at Rolla's Bond Medical Clinic who is volunteering as a chaplain. "That's just one school, and it's going on all over Afghanistan."

As with the rest of the country, after years of warring with the Taliban and with Russia, soldiers say that the local school in Bagram is a mere shell.

Today, 3,500 children and 70 teachers huddle under trees or inside open-air tents each day for class, they report.

American soldiers provide their favorite recess.

"They're certainly excited to see us," said Fink. "We just show up in the middle of the day, and I think the kids are just happy to get a break from school. The teachers are really good at organizing the kids so that we're not mobbed, and we have a kind of assembly line working."

Krenning added, "The lower-grade school children are fascinated by something to write on and the stuffed animals they receive. Those are the ones that'll just melt your heart when they take it away and go to work."

And how do children in Afghanistan then show their gratitude? Several of them learned a little English: "Thank you," they told the soldiers.

Capt. Richard Krenning is the pastoral advisor to Eta

Chapter at the University of Missouri-Rolla. If you are

interested in helping with this program please contact Eta

Alumni President Steve Liescheidt at stevengl1@aol.com

Alpha Guys Become Illini Super Fans

After a woeful one win season in 2003, the Illini football team has no where to go but up come 2004. Alpha Chapter is part of this rebuilding process for Illinois football. With the hope of a better season than last year, Alpha Chapter has started a new tradition. Four weekends in September and four home football games meant four times to paint their chests. The first game saw "Illini" painted and the second game "Go Illini," including the space naturally. The third game witnessed a nod to one of the fixtures of Illinois' football program, Mandi, the Marching Illini's feature twirler for the past six years. Mandi, who performs during the halftime show and on the sidelines during games, was only too pleased to be honored by the gentlemen of Beta Sigma Psi, as they proudly spelled her name on their chests in their trademark giant orange and blue letters. Every game the men of Alpha chapter pose with Mandi for photos, which she proudly displays as the background of her computer.

With the start of the Big Ten season, an old rival, Purdue, came to town, completing a busy home schedule in Sep-

tember. For the game against Purdue, the guys were ready once again, this time displaying the classic "Purdon't," including the apostrophe. No one associated with Alpha has been excluded from the festivities; girlfriends, pledges, and rushees have all been involved.

The guys have also developed a growing fan base. They have twice appeared in the student newspaper, the Daily Illini, and once in the local newspaper, the Champaign Gazette. Additionally, numerous other photographers stop by for great shots. The most interesting game so far has been UCLA, the second game. Numerous UCLA fans wanted their picture taken with the guys. And one of the proudest moments for the Beta Sigs was posing



Alpha Men in front of the Chapter House Before the Illinois-Purdue Football game

with the UCLA cheerleaders. (No male cheerleaders were allowed in the photo!) So as the football season continues, hopefully the Fighting Illini will improve as the Beta Sigs spur them onto victory each week. Regardless, everyone at Illinois remains confident that their basketball team will be great, and will win the "Busch Braggin' Rights" game against Mizzou for the fifth year in a row. GO ILLINI!

Paperwork Submission an Important Task

It is highly important that chapters both active and alumni submit the required forms to the National Office. Most importantly these forms allow the Board of Directors to know who to contact when issues come up that deal with the respective chapter or the Fraternity as a whole. The paperwork

process also allows National to know what is going on at the chapter level.

Some of the paperwork which is required on a regular basis is:

- Chapter Minutes
- List of Officers
- List of Members

- Risk Management Policy
- Associate Member Forms
- Activation Forms

Over the next couple of weeks, National Officers will be working with chapters to ensure that they are in full compliance with paperwork submission procedures.

Beta Enjoying the Balanced Life of the Three S's

The first members of Beta Chapter of Beta Sigma Psi originally belonged to a group known as the Purdue Concordia Club, which was founded at Purdue University in 1922 by the American Luther League of the Lutheran Church – Missouri Synod. The creation of the Concordia Club was led by Rev. Paul G. Schmidt, pastor of St. James Lutheran Church. He was very influential in starting this organization and also served as the pastoral advisor for many years. After the University of Illinois Concordia Club founded Beta Sigma Psi on April 17th, 1925, the Purdue Concordia Club soon followed and established Beta Chapter in June 1925.

Beta Chapter of Beta Sigma Psi is located on the corner of University St. and Sixth St. which is right across the street from campus. The year 2005 will mark the 80th anniversary of Beta Chapter. Currently, the members of Beta Chapter strive to maintain excellence among the Spiritual, Scholastic, and Social aspects of the fraternity.

Spiritually, we continue to have great relations with University Lutheran Church and Rev. James Barton, our pastoral advisor. We have numerous members show their support by holding offices at church and by volunteering to usher at many services. We also do service projects at

church every semester and help out whenever needed. Pastor Barton holds bible studies at our house and gives up much time and effort for us. We could not ask for a better pastoral advisor.

Scholastically, we place a strong emphasis on achieving academic excellence throughout the school year by conducting mandatory study tables and encouraging the importance of being successful in the classroom. Last semester, we ranked 3rd among 41 fraternities with an overall GPA of 3.06!

At Beta Chapter, the brothers like to reward themselves after a hard week of work by exercising the social aspect of the fraternity. We enjoy having numerous functions with sororities and cooperative houses. We also play volleyball and have cook-



outs in our front yard and go Christmas caroling in December which is always a lot of fun.

In the past two years, major renovations took place at Beta Chapter. In the summer of 2003, our second floor bathroom was completely remodeled and we also invested in a new roof this past summer. We appreciate all the alumni that had a part in these wonderful projects.

We look forward to holding MEF 2005 at Purdue University and encourage everyone to join us in an effort to make this year's MEF the best one yet.

Awards Submission a Year Long Process

You might be thinking that the middle of October is too early to be thinking about the 2005 Chapter Awards Competition. If you haven't already started working on your award submissions



than you are behind on where you should be.

For example, the Edwards Award requires the completion of the 2004–2005 Right on Target Manual. ROT requires chapters to do certain activities throughout the entire

school year. It's a much easier and quicker process if you fill out ROT weekly instead of May when the deadline is fast approaching.

If you have any questions concerning the Awards Process please contact your Regional Vice President.

Schedule of Events

- Oct 16—Purdue Homecoming
- Oct 16—University of Missouri-Rolla Homecoming
- Oct 16 & 17—Small Fraternity Caucus Meeting
- Oct 23—University of Missouri-Columbia Homecoming
- Oct 30—Kansas State Homecoming
- Oct 30—Nebraska Homecoming
- Oct 30—Illinois Homecoming
- Oct 31—Delta Colonization Ceremony

October 2004

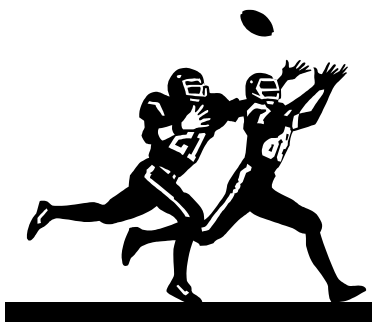
Sun	Mon	Tue	Wed	Thu	Fri	Sat
					1	2
3	4	5	6	7	8	9
10	11	12	13	14	15	16
17	18	19	20	21	22	23
24	25	26	27	28	29	30
31						

Beta Sigma Psi Football League

What an amazing couple of weeks it has been in the Beta Sig Football League. We have seen traditional football powerhouses fall prey to underdog teams and seen underdog teams rise to the occasion. Congrats go out to the UMR Miners who won broke a 58 game conference losing streak when they defeated Central Missouri State. Lets hope they keep that winning streak alive.

In the upcoming weeks we will see

our Big 12 North Schools playing each other. This is will defiantly have a drastic affect on the standings.



Team	W	L	PF	PA
Purdue	5	0	209	66
Missouri	4	1	161	63
Midland	4	2	135	117
Nebraska	3	2	121	133
Kansas St	2	3	146	151
Iowa St	2	3	91	128
Illinois	2	4	161	175
UMR	2	5	161	352

Beta Sigma Psi

c/o Southern Illinois District—LCMS
2408 Lebanon Ave
Belleville, IL 62221

Phone: 618.235.0014
Fax: 618.235.0051
Email: office@betasigmapsi.org

Per Aspera Ad Astra



We're on the web

www.betasigmapsi.org

The purpose of Beta Sigma Psi is to promote an environment in which the Lutheran college man can grow spiritually, scholastically, and socially. To that end, Beta Sigma Psi undertakes programs designed to develop Christian leaders and to aid individuals in assuming a satisfying and useful role in society. Through its alumni and undergraduate leadership, Beta Sigma Psi endeavors to assist each member:

1. Develop character
2. Develop intellectual awareness
3. Develop social responsibility to Chapter, College, Community, State, Nation, and World
4. Develop spiritual welfare
5. Develop brotherhood
6. Develop integrity
7. Promote friendship
8. Advance justice

2004—2006 National Board of Directors

National President

Chad Pfister
1060 Golfview Blvd. Apt. H
Valparaiso, IN 46385
219.462.0089
219.242.1856
Chad.pfister@verizon.net

Immediate Past President

Chad Winterhoff
1320 Wenig Rd NE Apt. 3
Cedar Rapids, IA 52402
319.270.2233
cwinterhof@hotmail.com

Senior Vice President

Ben Bahr
Concordia Seminary Box 9
801 DeMun Avenue
St. Louis, MO 63105
314.505.7413
ben@sonriseministries.com

Eastern Region Vice President

(A, B, Ψ)
Craig Marbach
2662 Morning Glory
Rolling Prairie, IN 46371
219.575.1578
cmarbach@howmet.com

Northern Region Vice President

(Δ, E, A-A)
Rudy Ristich
1437 President St.
Glendale Heights, IL 60139
630.220.0837
rudyristich@hotmail.com

Southern Region Vice President

(Z, H, I)
Adam Synoground
6442 NW 49th Street
Kansas City, MO 64151
800.255.6837 x1371
adamdog69@hotmail.com

Alumni Affairs Vice President

Andy Ortstadt
639 Bonita Ave.
Webster Groves, MO 63119
314.962.0582
aortstadt@sbcglobal.net

Treasurer

Art Giesler
2308 Woodmoor Lane
Colleyville, TX 76034
817.421.5871
gieslerbsp@aol.com

Recruitment Director

Cliff Ascher
123 White Pine Ave.
O'Fallon, IL 62269
618.632.8934
cdascher@sbcglobal.net

Publications Director

Tanner Ehmke
510 W. Belmont Ave. Apt. 1501
Chicago, IL 60657
773.525.3184
tcehmke@yahoo.com

Membership Ed/Scholarship Director

Travis Yee
801 DeMun Ave.
St. Louis, MO 63105
917.559.0292
ninjawing@yahoo.com

Lutheran Relations Director

Dan Ross
7105 Virginia Road, Suite 6A3
Crystal Lake, IL 60014
815.455.1203
dan.ross@thrivent.com

Executive Director (Interim)

Matt Wolters
R.R. 2 Box 162
Atwood, KS 67730
785.626.4655
mattwolters@starband.net

Pastoral Advisor (LCMS)

Mark Heilman
2010 Stevenson Drive
Ames, IA 50010
515.232.4595
mkheilman@aol.com

What do you seek in a career?

☐

**Energize my
entrepreneurial
spirit.**

☐

**Help others better
their future.**

☐

Work with a purpose.

At Thrivent Financial for Lutherans, you can do more than make a living. You can make an impact. As a financial associate with our Fortune 500 organization, you can help Lutherans achieve their goals. And we'll help you achieve yours. Our organization uses its strength to lift others and its values to do what's right—each year providing millions of dollars to the communities and congregations we serve. Our decades of personalized service, innovative strategies and quality products have earned us a place of trust in American homes.

We will help you succeed in this entrepreneurial opportunity with:

- *Innovative marketing and products.*
- *Ongoing training.*
- *High income potential.*
- *Flexible, competitive benefits.*
- *Established, expandable client base.*

Aspire to—and achieve—great things as a financial associate with Thrivent Financial.

For consideration visit www.thrivent.com/careers.



Thrivent Financial for Lutherans™

Where Values Thrive.™

22095DB N804

WORK WITH PURPOSE