

# Marty's Boys

## Inside this issue:

November Devotion—Matthew 28	2
Who is Ben Bahr?	2
Epsilon Chapter Update	4
Small Fraternity Leaders Meet in Indy	4
Beta Sigma Psi Football League	5
Boards Meet to Discuss Vision for Future	6
National Council Meeting to be held at MEF	6
Eta Members Involved in Accident	6
Karmeier Wins Ugly Supreme Court Race	7
Lutheran Hour Ministries Online	8
You Might Be A Lutheran If ...	8
I'm Not Fat, I'm Festively Plump	8



## Beta Sig back in Big Red Country

Yes, it is official Beta Sigma Psi is back at the University of Nebraska-Lincoln.

On October 31, 2004 National President Chad Pfister presided over the Colony Installation and Associate Member Ceremonies at University Lutheran Church.

Over 90 Alumni, friends, family, and other Beta Sigs were in attendance for the ceremony and lunch.

In addition, to the ceremonies Rupert Dunklau was presented with the Tie-mann Award and Del Lienemann, Sr. was presented with a new Lienemann Award Plaque.

Over the upcoming months, the men of Delta



The founding members of Delta Colony

Colony will be working on achieving full chapter status. This will include maintaining a viable number of members, complete at least one successful recruitment period (grow the chapter by one-third), and complete a service project.

This journey will not be an easy one but will be an enjoyable one.

More information concerning the Delta Colony ceremony can be found in the upcoming issue of the Gold Rose.

## Expansion Update

The expansion of Beta Sigma Psi onto new and old campuses is well on its way.

The efforts at Texas A&M are going well. The group has held several meetings where attendance has

ranged from 4 to 15 men. The group is preparing their petition to the National Board of Directors with a decision to be made in December.

In addition, to efforts at Texas A&M, the campus

pastor at the University of Nebraska-Kearney is interested in bringing back Xi Chapter. A meeting was held this past weekend at Kearney, and things look bright for the recolonization of Xi Chapter in the upcoming 12 months.

## November Devotion—Matthew 28

By Pastor Mark Heilman  
National Pastoral Advisor

"Per Aspera Ad Astra." The Beta Sigma Psi motto reminds us that it is "through harshness," we go "to the stars." You know that it is through study and hard work that you will get a degree from college. It is through more hard work that you earn a paycheck at a job and gain promotions. Difficulties in life can shape us, harden us, help us to grow for the future.

We can hear stories about famous athletes or government leaders or successful businessmen who overcame hardships to get to the top, but for everyone who succeeds, there are those who fail. How do we know we can endure those hardships as we "reach for the stars"?

St. Paul tells us in Philippians, "Forgetting what is behind and straining toward what is ahead. I press on toward the goal to win the prize for which God has called me heavenward in Christ Jesus." We go through adversity not to be able to reach the stars, but to keep focused on what God has already given us in Christ Jesus. Jesus faced the ultimate harshness on the cross for all of us. Now we can press on ahead doing our best knowing that we reach the stars trusting in what Jesus did, not what we have to do.

Pastor William J. Fields was the advisor to the Epsilon Chapter from 1950 through 1970. He contributed several articles on prayers and spirituality to the Beta Sigma Psi manual. In the

year of his death from cancer, he wrote about Jesus closing words in Matthew 28, "Lo, I am with you always to the end of the earth." He learned that the word "always" in that promise can also be translated, "all the days." Jesus promises to be with us "all the days." He is with us in the days when we pass and when we fail. He is with us when our plans come together and when they fail. He is with us when we know where we are going and when we are lost. He is with us in health and in sickness, in life and death. He is with us as we face all the harshness of life.

"Per Aspera Ad Astra."

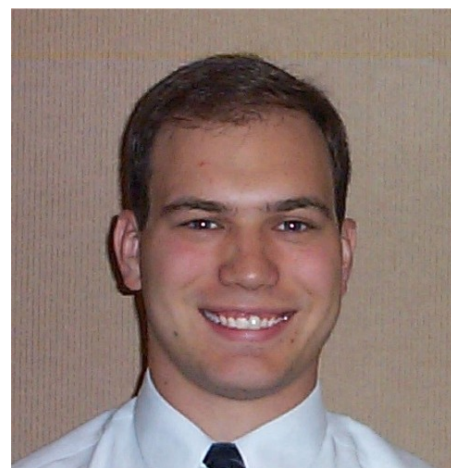
**In the upcoming Issues, this page will feature a devotion written by Chapter Pastoral Advisors and a biographical section on current members of the National Board of Directors.**

## Who is Ben Bahr?

I was born in Rome, NY, and have two younger brothers. In 1996, I began my education at Concordia College in Bronxville, NY. While there, I felt a need for a group which would proudly and clearly express a Lutheran identity on campus. My friend and I found the Beta Sig website, and a few months later, Iota Psi colony was formed. As the Vice President, I faced the difficult task of educating everyone else and myself at the same time. I was elected to be the

first president of the newly chartered Psi Chapter in 1999.

In my last year at Concordia, I was elected Recruitment Chairman, and recruited 7 new brothers (our largest class ever, until this year when the record was tied. I have served for 6 summers and 1 full year at SonRise camp in upstate New York. I am currently a student at Concordia Seminary, St. Louis and am the National Senior Vice President of Beta Sigma Psi.





Del Lienemann, Sr. being presented with a new Lienemann Award Plaque



Yes that is the men of Alpha Chapter with the UCLA Cheerleaders

Do you have pictures that you would like included in an upcoming issue of Marty's Boys? If so, e-mail them to [betasigpresident@verizon.net](mailto:betasigpresident@verizon.net)



All the Beta Sigs at the Delta Colonization Ceremony



Rupert Dunklau (Delta) receiving the Tiemann Award from Dennis Setzler and Lee Anderberry



## Epsilon Chapter Update

Everything seems to be a little bit more exciting this semester at Epsilon Chapter. Most of this excitement extends from having a very successful recruitment class of 22 new men over the summer. This has added a lot of new faces to the house and a lot of new men to teach the meaning of Beta Sigma Psi. It has been an exciting semester in this aspect, as well as many others also so far.

In addition to the new members, we also have had one phase of our kitchen remodeling project completed. The phase included refinishing all of the cabinets, getting new countertops, and installing a new serving buffet in the dining room. It gives the kitchen a new feel, and it will be even more exciting once the final phase is completed this next summer.

On another note, Epsilon recently received second place overall in Homecoming activities at Iowa State this fall. We placed first in community service, third in Yell-Like-Hell, and received various other awards too. It was a lot of work, but all the members helped carry their weight and put forth the effort necessary to achieve excellent results.

As the semester comes to a close, we are stressing the importance of studying for finals and managing time well to make sure that everything gets



done. We are starting to plan for the next semester already, and it is looking like it should be another great one!

## Small Fraternity Leaders Meet in Indy

National Officers from 10 National Fraternities meet on October 16 & 17 in Indianapolis to discuss the role of Small Fraternities in the Greek System.

This meeting was not the first time that Small Fraternity National Officers had met to discuss our role and future together. However, this was the first time in over 5 years that a meeting was not held in conjunction with an NIC Annual Meeting.

Two major actions were taken by

the "Small Fraternity Working Group". The first is the development of a brochure to be sent to Greek Advisors, Student Affairs Officers and University Presidents. This brochure will focus on the benefits that being a member of a small fraternity has, such as increased leadership opportunities, more interaction with the National Body, and the closeness that our members share.

In addition, the SFWG agreed to create a website where members can

upload documents to be shared with other groups.

The SFWG plans to hold a meeting in April in conjunction with the 2005 NIC Annual Meeting in Washington, D.C. In the future, Beta Sigma Psi hopes to work more closely with other small fraternities in the hosting of leadership academies, summer meetings, and development of membership education programs.

### Schedule of Events

- Nov 13—National Board of Directors Meeting
- Nov 20—New York Alumni Chartering Ceremony
- Nov 20—Iowa State at Kansas State (Football)
- Nov 25—TURKEY DAY
- Nov 26—First Official Shopping Day of Christmas
- Nov 27—Missouri at Iowa State (Football)
- Dec 14—National Board of Directors Conference Call
- Dec 24—Christmas Eve
- Dec 25—Christmas
- Dec 31—New Year's Eve

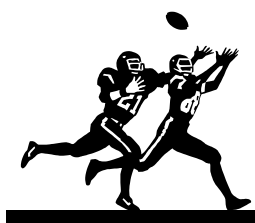
# November 2004

Sun	Mon	Tue	Wed	Thu	Fri	Sat
	1	2	3	4	5	6
7	8	9	10	11	12	13
14	15	16	17	18	19	20
21	22	23	24	25	26	27
28	29	30				

## Beta Sigma Psi Football League

The last five weeks have been horrible for the Beta Sigma Psi Football League. The best way to sum it all up is "Oh how the mighty have fallen." Purdue dropped four of their last five. Missouri has lost four in a row. Kansas State and Nebraska have both lost three of their last five. On the positive side, the Iowa State Cyclones have a three game win streak, and could win the Big 12 North if they defeat Kansas State this weekend and Missouri next

weekend. The last two weeks of the regular season will defiantly prove interesting. Can Iowa State or Missouri win the Big 12 North and earn the honor of playing against Oklahoma in the Big 12 Championship.

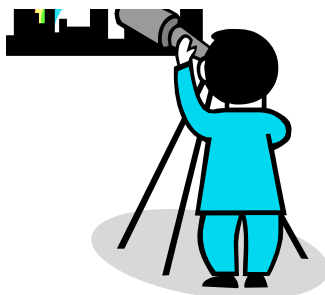


Team	W	L	PF	PA
Purdue	6	4	295	155
Iowa St	5	4	178	206
Nebraska	5	5	255	272
Midland	5	6	237	298
Missouri	4	5	225	170
Kansas St	4	6	303	300
Illinois	3	7	219	295
UMR	3	8	254	509

## Boards meet to Discuss Vision for the Future of Beta Sig

On November 13, 2004 members from the Board of Directors of the National Fraternity, Educational Foundation, and Housing Foundation meet at Concordia Seminary St. Louis to discuss the "Vision for the Future of Beta Sigma Psi."

This meeting was a continuation of the 5 year Plan created in November of 2002. The purpose of the meeting was to restart the discussions which started at that time and to redevelop



the current 5 year plan that is in place.

The discussions will continue under a committee headed by former National President

Larry Edwards (Zeta). The committee will be made up of current active members, alumni board members, and other alumni. They will be charged with developing an updated

plan and soliciting feedback from active and alumni chapters, and members.

More information concerning the committee, the 5 year plan, and feedback procedures will be released in upcoming issues of Marty's Boys. Questions at this time should be directed to Chad Pfister, National President.

## National Council Meeting to be Held at MEF

The National Board of Directors during its November Meeting agreed with National President Chad Pfister's decision to hold a National Council meeting on February 13, 2005 at 3 p.m.. This meeting will coincide with the Membership Education Forum being held at Purdue University.

The purpose of the February National Council meeting will be to approve the appointment of Adam Synoground as Southern Region Vice President, as

well as the approval of several Constitutional and By-Law amendments.

The Constitutional and By-Law amendments deal with the National Fraternity's handling of colonies and finances, and it is necessary for them to be passed before the beginning of the National Fraternities 2005-2006 Fiscal

Year. Packets will be mailed to all National Council Delegates in January. Any questions should be directed to National President, Chad Pfister.

**If you have any resolution, policy, or amendment which you wish to present to the National Council please contact Chad Pfister by January 10, 2005 in order for it to be included in the pre-meeting packet.**

## Eta Members involved in serious accident

Five members of Eta Chapter (University of Missouri-Rolla) were involved in a serious car accident Friday near Jefferson City, Missouri after the van they were driving blew a tire and crashed into a rock bluff. Brother Chip Bilbry was trapped in the wreckage and was eventually freed by rescue workers. He was Life Flighted from the scene of the accident in Uni-

versity Hospital in Columbia, Missouri. After several surgical attempts over the weekend, doctors were unable to restore blood flow and tissue damage to Chip's left hand, and it was necessary to amputee his left hand. Chip remains in a very positive attitude at this moment. Also involved in the accident were Travis Bryant and Paul Gohlson who both had minor in-

juries, Cory Demieville suffered a concussion, and Andy Ricke suffered fractured vertebrae, but all four were released from the hospital.

At the time of publication, Chip is in good spirits and will be retuning home to Omaha, Nebraska for the next couple of months. Marty's Boys will keep you informed on Chip's condition in coming issues.

## Karmeier wins ugly Supreme Court Race

This article was taken from the Associated Press. Llyod Karmeier is an alum of Alpha Chapter.

By Ryan Keith

Republicans cut into the Democratic majority on the state Supreme Court on Tuesday with a surprisingly strong win in a nasty race that pitted powerful lobbying groups for trial lawyers and doctors against each other.

The race between Republican Lloyd Karmeier and Democrat Gordon Maag, two relatively obscure southern Illinois judges, easily shattered state and national spending records for a judicial contest.

With 92 percent of precincts reporting unofficial results, Karmeier had 55 percent of the vote and Maag captured 45 percent.

Karmeier's win cut Democratic control of the court to a 4-3 majority, which could prove to be significant in high-profile cases.

Karmeier credited the win to strong support from voters upset with the judicial system in Madison County,

which has been heavily criticized for large jury awards in some cases and has been home to a Supreme Court justice for decades. Karmeier lives in Nashville in Washington County, while Maag lives in Glen Carbon in Madison County.

"I think there is a message being sent," Karmeier said shortly after declaring victory.

The two battled for the sprawling, 37-county 5th District seat in a race with unusually high political stakes.

They combined to take in more than \$8.5 million in campaign cash and spent at least \$7.6 million. The old spending record for an Illinois judicial race was about \$3.2 million; the national record was \$4.4 million, set in Alabama in 1996. Karmeier said he regretted the negative tone of the race and the millions of dollars spent, and he hopes it acts as a "catalyst for change" in the way judicial races are financed and conducted.

"Basically that's obscene for a judicial race," Karmeier said. "What does it gain people? How can people have

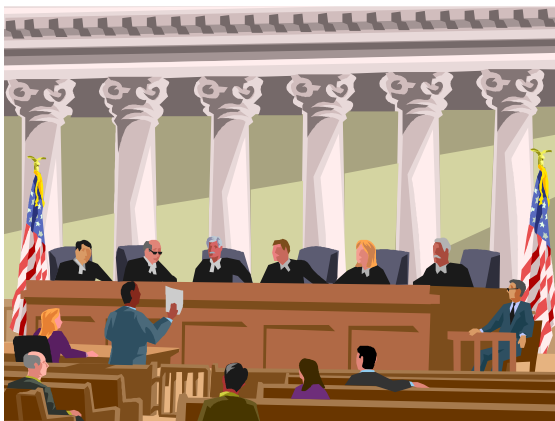
faith in the system?"

Business groups, doctors, trial lawyers and others ponied up millions of dollars to help the candidate they believed would be most friendly to them on such highly charged issues as tort reform and medical malpractice.

Trial lawyers backed Maag, an appellate court justice for the past decade. Doctor and insurance groups supported Karmeier, a circuit judge since 1986.

Despite vowing in August to avoid negative campaigning and agreeing to let a special committee act as ethical policeman, the candidates and their political allies used their unprecedented cash to sling mud.

Television ads painted each judge as soft on crime and less qualified than their opponent. The ethics committee rebuked both candidates' tactics, but the campaigns simply blamed each other for misleading ads and kept up the attacks.



**Brian Bosma (Beta) was reelected to the Indiana House of Representatives and will serve as Speaker of the House after the Republicans took control of the Indiana House.**

**If you know of any other Beta Sigs elected to office in November please contact Chad Pfister.**

## Lutheran Hour Ministries Online

Did you know that you can get daily devotions, sermons, and ministry updates sent directly to your mailbox just like Marty's Boys?



If you go to [www.lhm.org](http://www.lhm.org) and click on "Email List Subscriptions" you can sign up to receive those items men-

tioned above and many more.

Currently the following subscriptions are available through Lutheran House Ministries.

- Daily Devotions
- "The Lutheran Hour"
- Ministry Update
- E-news releases
- Equipping Newsletter
- Chronicle Newsletter
- International Changed Life Stories

Many thanks to former National President and Mu Founding Father Bob Hillard for passing this link along to Marty's Boys. We strongly encourage everyone to sign up for the Daily Devotions offering from Lutheran Hour Ministries.

*Lutheran Hour  
Ministries Online*  
"Bringing Christ to the Nations — and the Nations to the Church"

## You Might Be A Lutheran if ...

- when someone mentions red and green (in terms of Christmas), you immediately think of a battle over hymnals.
- The pastor skips the last hymn to make sure that church lasts exactly 60 minutes.
- The only open pew is up front, so you volunteer to shovel the sidewalk.
- You think you're paying your pas-
- tor too much if he gets a new car for the first time in eight years.
- You're watching "Star Wars" in the theatre and when they say, "May the force be with you," the theatre replies, "and also with you"
- Your house is a mess because
- you're "saved by Grace," not by works.
- You can actually come up with responses to this.

Thanks to the men of Zeta Chapter for passing this link along. More You Might Be A Lutheran If ... can be found at [www.oldlutheran.com/ymbali1.html](http://www.oldlutheran.com/ymbali1.html).

## "I'm Not Fat, I'm Festively Plump"

You may have noticed that Marty's Boys is getting plumper and plumper by the issue. This is because there is so much good stuff going on out there in Beta Sig world that we just can't decide on what to cut out and hold off for the next issue.



Much like Eric Carman wanted to "Beef Up" in Weight Gain 4000, Marty's Boys wants to beef up as well. This can best be done if members begin submitting their own stories for publication.

If you have a story idea for an upcoming issue, do not hesitate to contact Chad Pfister.

The December Issue of Marty's Boys will not be out until the week of Christmas as the Editor will be taking Finals the first two weeks of December.



## Beta Sigma Psi

c/o Southern Illinois District—LCMS  
2408 Lebanon Ave  
Belleville, IL 62221

Phone: 618.235.0014  
Fax: 618.235.0051  
Email: [office@betasigmapsi.org](mailto:office@betasigmapsi.org)

**Per Aspera Ad Astra**



We're on the web

[www.betasigmapsi.org](http://www.betasigmapsi.org)

The purpose of Beta Sigma Psi is to promote an environment in which the Lutheran college man can grow spiritually, scholastically, and socially. To that end, Beta Sigma Psi undertakes programs designed to develop Christian leaders and to aid individuals in assuming a satisfying and useful role in society. Through its alumni and undergraduate leadership, Beta Sigma Psi endeavors to assist each member:

1. Develop character
2. Develop intellectual awareness
3. Develop social responsibility to Chapter, College, Community, State, Nation, and World
4. Develop spiritual welfare
5. Develop brotherhood
6. Develop integrity
7. Promote friendship
8. Advance justice

## 2004—2006 National Board of Directors

### National President

Chad Pfister  
1060 Golfview Blvd. Apt. H  
Valparaiso, IN 46385  
219.462.0089  
219.242.1856  
[Chad.pfister@verizon.net](mailto:Chad.pfister@verizon.net)

### Immediate Past President

Chad Winterhoff  
1320 Wenig Rd NE Apt. 3  
Cedar Rapids, IA 52402  
319.270.2233  
[cwinterhof@hotmail.com](mailto:cwinterhof@hotmail.com)

### Senior Vice President

Ben Bahr  
Concordia Seminary Box 9  
801 DeMun Avenue  
St. Louis, MO 63105  
314.505.7413  
[ben@sonriseministries.com](mailto:ben@sonriseministries.com)

### Eastern Region Vice President (A, B, Ψ)

Craig Marbach  
2662 Morning Glory  
Rolling Prairie, IN 46371  
219.575.1578  
[cmarbach@howmet.com](mailto:cmarbach@howmet.com)

### Northern Region Vice President

(Δ, E, A-A)  
Rudy Ristich  
1437 President St.  
Glendale Heights, IL 60139  
630.220.0837  
[rudyristich@hotmail.com](mailto:rudyristich@hotmail.com)

### Southern Region Vice President (Z, H, I)

Adam Synoground  
6442 NW 49th Street  
Kansas City, MO 64151  
800.255.6837 x1371  
[adamdog69@hotmail.com](mailto:adamdog69@hotmail.com)

### Alumni Affairs Vice President

Andy Ortstadt  
639 Bonita Ave.  
Webster Groves, MO 63119  
314.962.0582  
[aortstadt@sbcglobal.net](mailto:aortstadt@sbcglobal.net)

### Treasurer

Art Giesler  
2308 Woodmoor Lane  
Colleyville, TX 76034  
817.421.5871  
[gieslerbsp@aol.com](mailto:gieslerbsp@aol.com)

### Recruitment Director

Cliff Ascher  
123 White Pine Ave.  
O'Fallon, IL 62269  
618.632.8934  
[cdascher@sbcglobal.net](mailto:cdascher@sbcglobal.net)

### Publications Director

Tanner Ehmke  
510 W. Belmont Ave. Apt. 1501  
Chicago, IL 60657  
773.525.3184  
[tcehmke@yahoo.com](mailto:tcehmke@yahoo.com)

### Membership Ed/Scholarship Director

Travis Yee  
801 DeMun Ave.  
St. Louis, MO 63105  
917.559.0292  
[ninjawing@yahoo.com](mailto:ninjawing@yahoo.com)

### Lutheran Relations Director

Dan Ross  
7105 Virginia Road, Suite 6A3  
Crystal Lake, IL 60014  
815.455.1203  
[dan.ross@thrivent.com](mailto:dan.ross@thrivent.com)

### Executive Director (Interim)

Matt Wolters  
R.R. 2 Box 162  
Atwood, KS 67730  
785.626.4655  
[mattwolters@starband.net](mailto:mattwolters@starband.net)

### Pastoral Advisor (LCMS)

Mark Heilman  
2010 Stevenson Drive  
Ames, IA 50010  
515.232.4595  
[mkheilman@aol.com](mailto:mkheilman@aol.com)